



Accession Monitoring Report

May 2004 – December 2006

A joint online report by the Home Office,
Department for Work and Pensions,
HM Revenue & Customs and
Communities and Local Government.

Published 27 February 2007

INTRODUCTION

Background.....	1
Key Findings	1
Note on the publication.....	2
Note on the Worker Registration Scheme data	2
Technical notes on the publication	2
Links to useful websites	3

WORKER REGISTRATION SCHEME (WRS)

Applicants and Applications to the WRS

1. Applicants.....	4
1.a. Applications	6

Applicant Profile

2. Nationality of applicants	8
------------------------------------	---

Profile of Registered Workers

3. Age and Gender of registered workers	10
4. Dependants of registered workers	12
5. Occupation groups in which registered workers are employed	13
6. Occupations in which registered workers are employed	15
7. Registered workers' hours of work and wages	17
8. Proportion of registered workers in temporary/permanent employment.....	17
9. Intended Length of Stay	17
10. Geographical distribution of employers of registered workers	18
11. Geographical distribution of employers of registered workers by occupation group	20
12. Nationality of registered workers by occupation group	22

National Insurance Numbers

13. National Insurance Numbers allocated and purpose of allocation.....	24
14. National Insurance Number applications by region	25

Benefits and Tax Credits

15. Applications for tax-funded, income-related benefits	26
16. Nationality of applicants for tax-funded, income-related benefits	27
17. Applications for tax-funded, income-related benefits by region	28
18. Applications for Child Benefit	29
19. Applications for Tax Credits	30

Housing and Homelessness support

20. Local Authority lettings	31
21. Homelessness assistance.....	32

ANNEX A

All occupations in which registered workers are employed	34
--	----

INTRODUCTION

Background

On 1 May 2004, ten countries – Cyprus, Czech Republic, Estonia, Hungary, Latvia, Lithuania, Malta, Poland, Slovakia and Slovenia – joined the European Union (EU). From that date, nationals of Malta and Cyprus have had full free movement rights and rights to work, throughout the EU. Prior to enlargement, existing EU member states had the right to regulate access to their labour markets by nationals of the other eight countries – the 'Accession 8' or 'A8'. The UK Government put in place transitional measures to regulate A8 nationals' access to the labour market (via the Worker Registration Scheme) and to restrict access to benefits.

The data in this publication are based on Management Information, are provisional and may be subject to change. The data are **not** National Statistics.

Key Findings

- Nationals from the A8 countries continue to come to the UK to work, contributing to the success of the UK economy, while making few demands on our welfare system.
- In total there were 63,000 initial applicants to the Worker Registration Scheme (WRS) in Quarter 4 (Q4) 2006, compared to 65,000 in Q3 2006, and 51,000 in Q4 2005. In total there were approximately 20,000 more initial applications in 2006 than 2005, up from 212,000 to 232,000.
- A8 workers are continuing to go where the work is, helping to fill the gaps in our labour market, particularly in administration, business and management, hospitality and catering, agriculture, manufacturing and food, fish and meat processing. In 2006, 43% of registered workers applied to work in administration, business and management (which includes employment agencies), compared to 36% in 2005.
- In many cases, A8 nationals are supporting the provision of public services in communities across the UK. In 2006, over 2,500 A8 nationals registered as bus, lorry and coach drivers and almost 6,200 as care workers. 700 teachers, researchers and classroom assistants, 200 dental practitioners (including hygienists and dental nurses), and over 1,000 GPs, hospital doctors, nurses and medical specialists were also registered in 2006.
- Workers applied to work for employers based all over the UK, with the proportion applying to London falling from 17% in Q4 2004 to 10% in Q4 2006. As the proportion applying elsewhere has increased, the Midlands, Anglia, North East and North West regions have now overtaken London, with 16%, 15%, 12% and 11% respectively of the total registered workers in this quarter.
- 97% of workers applied to the WRS to work full time.
- 98% of applications for National Insurance numbers made by A8 nationals between May 2004 and December 2006 were for employment purposes.
- The vast majority of workers since May 2004 are young: 82% aged between 18 and 34. 94% of workers state that they have no dependants living with them in the UK when they registered, and only 4% had dependants under the age of 17 with them.
- The numbers of A8 nationals applying for tax-funded income-related benefits and housing support remain low. For example, 1,913 applications for Income Support and Jobseeker's Allowance were processed in Q4 2006, of which 542 were allowed to proceed for further consideration, compared to 1,622 and 455 in Q3 2006 and 753 and 93 in Q4 2005.

Note on the publication

This is the tenth of a series of quarterly reports based on provisional Management Information collected through the WRS and manual monitoring of applications for National Insurance numbers, claims for benefits, applications for tax credits and applications for housing and homelessness assistance. The figures published in the earlier reports have been updated to include applications that were previously outstanding. The data are presented in quarters and annually, except for 2004, which has been shown as a total for the part year May to December 2004.

Note on the Worker Registration Scheme data

Nationals of the A8 countries who wish to take up employment in the UK for a period of at least a month are generally required to register with the WRS. The statistics in this publication are only of those that have registered with the Home Office to work as employees in the UK. Workers who are self-employed do not need to register and are therefore **not** included in these figures; there may also be other workers from the accession countries who for one reason or another do not register and are thus also not included in these figures. The data from the WRS provided here are data on applicants to the scheme rather than applications (with the exception of table 2 and section 1.a.). Applicants must register more than once if they are employed by more than one employer. They must also re-register if they change employer. Each application to the WRS therefore represents one job, not one applicant. To avoid counting applicants more than once, each applicant is represented only once in this report, with information relating to the **first** job for which he/she registered.

Data are provisional and an estimated 1,605 applications from the period remain outstanding, of which 1,515 were received in Q4 2006. In these cases, final decisions had not been issued at the time of producing this report. In this report outstanding applications are only included in table 1 in the 'Outstanding' column.

All WRS data in this report are sorted according to the date the applicant applied. The 'date applied' is the date the applicant puts on the application form. There will be cases in which there is a delay between when the forms are filled in or posted and when the applications are received by the Home Office.

Please note that we have used the term 'occupation group', under sections 5, 11, and 12, to show where people are working rather than 'sectors', since our previous use of the latter term does not conform to the National Statistics definition of Standard Industry Codes. These, together with our listing of occupations, which are not the same as the National Statistics Standard Occupational Codes, are currently being reviewed with the aim of the early implementation of recognised standard terminology.

The number of applicants to the WRS does **not** represent a measurement of net migration to the UK (inflows minus outflows). Rather, it is a gross (cumulative) figure for the number of workers applying to the WRS. The figures are not current: an individual who has registered to work and who leaves employment is not required to de-register, so some of those counted will have left the employment for which they registered and indeed some are likely to have left the UK. Figures for net migration to the UK are published by the Office for National Statistics (ONS). The International Migration Report 2005, published on 2 November 2006, estimates 64,000 more A8 citizens migrated into the UK for at least a year than left in 2005. This shows an increase of 31% compared with an estimated 49,000 in 2004, which is partly explained by the fact that the 2005 estimate covered the first full calendar year following accession in May 2004. For further information, please click on the following link.

<http://www.statistics.gov.uk/CCI/nugget.asp?ID=260&Pos=3&ColRank=2&Rank=448>

Technical notes on the publication

- All WRS figures (other than percentages) shown in tables 1 to 10 and the annex are rounded to the nearest five. The figures in tables 11 to 20 are not rounded.
- † indicates 1 or 2

- - indicates nil.
- Because of rounding, figures may not sum to the totals shown. All percentages are calculated from non-rounded figures.
- Since accession took place on 1 May 2004, the data quoted for 2004 are only for the part year from May to December, so care should be taken when comparing this with subsequent periods.

Links to useful websites

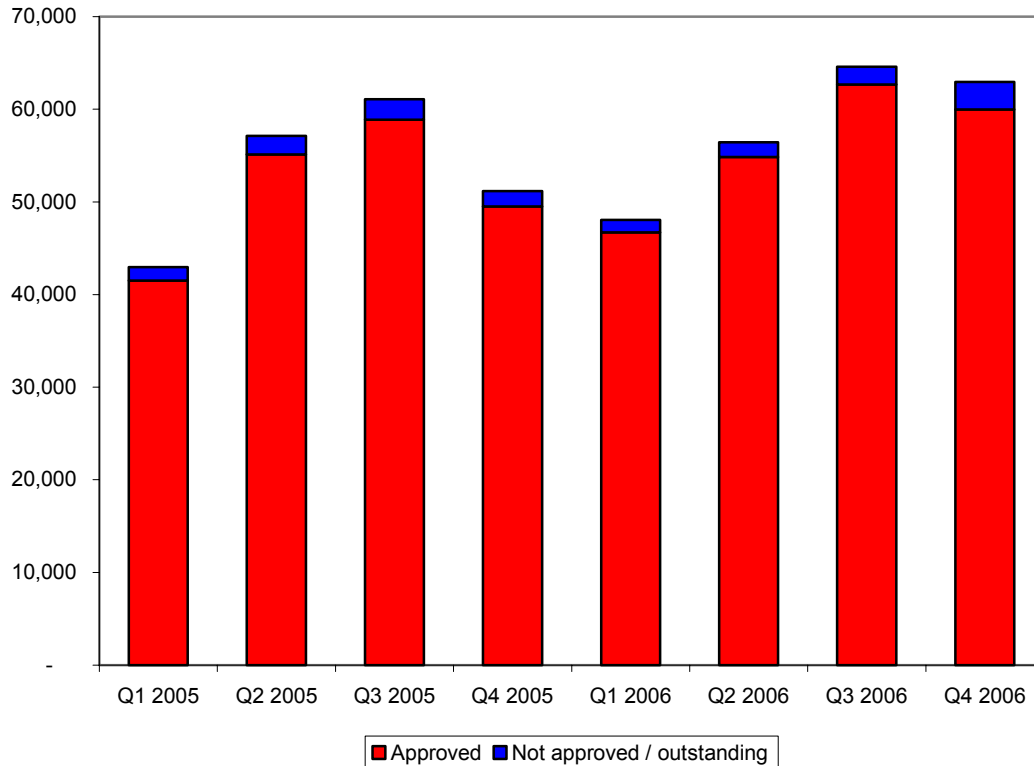
- Working in the UK, information about WRS:
www.workingintheuk.gov.uk
- Link to the Worker Registration Form and guidance:
http://www.workingintheuk.gov.uk/working_in_the_uk/en/homepage/schemes_and_programmes/worker_registration.html
- Fresh Talent: Working in Scotland Scheme:
http://www.scotlandistheplace.com/stitp/sitp_display_noflash.jsp?pContentID=276&p_applic=CCC&pElementID=165&pMenuID=3&p_service=Content.show&
- HM Revenue & Customs (HMRC) Right To Reside In The United Kingdom:
<http://www.hmrc.gov.uk/manuals/tctmanual/TCTM02001.htm>
<http://www.hmrc.gov.uk/taxcredits/residence-rules.htm>
- Communities and Local Government (CLG):
<http://www.communities.gov.uk/index.asp?id=1156294>
- Department for Work and Pensions (DWP) – The impact of free movement of workers from Central and Eastern Europe on the UK labour market:
<http://www.dwp.gov.uk/asd/asd5/wp29.pdf>
- DWP – National Insurance Number Allocations to Overseas Nationals Entering the UK 2006: http://www.dwp.gov.uk/asd/asd1/niall/nino_allocation.asp
- Accession Monitoring Report:
http://www.ind.homeoffice.gov.uk/aboutus/reports/accession_monitoring_report
- The European Community Association Agreements Statistics for Bulgaria, Romania and Turkey: <http://www.ind.homeoffice.gov.uk/aboutus/reports/eeas>
- Home Office – Research, Development and Statistics report on Employers' use of migrant labour:
<http://www.homeoffice.gov.uk/rds/pdfs06/rdsolr0406.pdf>
- The Office for National Statistics (ONS):
<http://www.statistics.gov.uk/>
- ONS's statistics on International Migration (MN Series):
<http://www.statistics.gov.uk/statbase/Product.asp?vlnk=507&More=N>
- ONS's International Passenger Survey Travel Trends (annual data on travel to/from the UK):
<http://www.statistics.gov.uk/StatBase/Product.asp?vlnk=1391&Pos=&ColRank=1&Rank=272>; and
Visits to the UK from the enlarged EU (monthly data on EU travel to the UK):
<http://www.statistics.gov.uk/statbase/Product.asp?vlnk=12222>

WORKER REGISTRATION SCHEME (WRS)

Applicants and Applications to the WRS

1. Applicants¹

Chart 1 Applicants applied by quarter, January 2005 - December 2006



This chart excludes applications made in 2004.

- A cumulative total of 579,000 applicants have registered on the Worker Registration Scheme (WRS) between 1 May 2004 and 31 December 2006, but this does not indicate the number of long term migrants of A8 workers into the UK, as most come for only short periods.
- In total there were 63,000 applicants in Q4 2006, of whom 60,000 (95%) were issued with Worker Registration certificates and cards, compared to 65,000 and 63,000 (97%) in Q3 2006 and 51,000 and 49,000 (97%) in Q4 2005.
- Applications have fluctuated between highs in the summer months and lower numbers of applications in the winter months. For example there were 23,000 applications in July 2006 and 15,000 in December 2006. Although in October and November 2006 the number of initial applicants to the WRS (25,000 and 23,000 respectively) were higher than than both June and July 2006 (22,000 and 23,000 respectively).
- The total applications for October to December 2006 of 25,000, 23,000, and 15,000 respectively, were higher than in the same months in 2005.

¹ The data for applicants is recorded by the date on the application form, the standard statistical approach. However, as applications continue to be received there may be an increase in the quarterly total number of applications in subsequent reports.

Table 1 Applicants by quarter applied, May 2004 - December 2006

		Number of applicants					
Period		Approved	Refused	Exempt	Withdrawn	Outstanding	Total
2004	Total	125,880	1,250	640	6,780	-	134,550
2005	Q1	41,495	480	120	870	-	42,965
	Q2	55,105	570	85	1,350	†	57,110
	Q3	58,870	420	70	1,720	-	61,080
	Q4	49,485	330	35	1,305	†	51,160
2005	Total	204,955	1,800	310	5,245	5	212,310
2006	Q1	46,725	320	30	990	5	48,070
	Q2	54,855	285	40	1,245	10	56,430
	Q3	62,645	300	30	1,550	75	64,605
	Q4	59,970	220	105	1,140	1,515	62,945
2006	Total	224,195	1,130	195	4,930	1,600	232,050

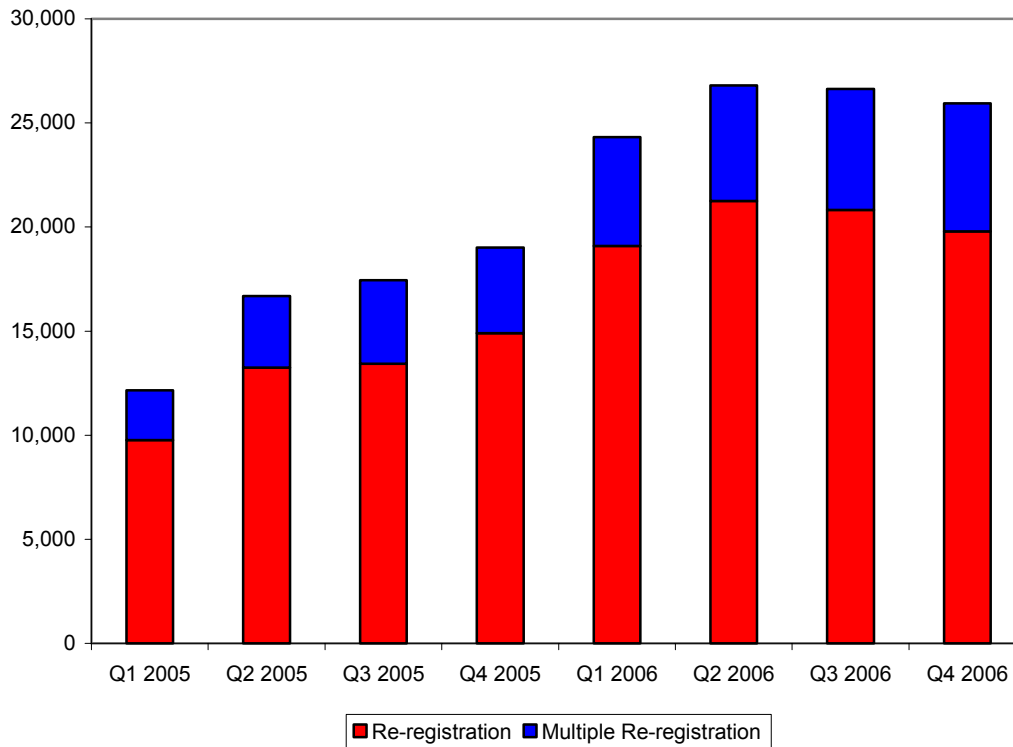
This table shows applicants rather than the number of applications made. The figures are for initial applications only (and do not include the 4,905 multiple applications, where an individual is doing more than one job simultaneously, or the 182,945 total re-registrations, where an individual has changed employers).

The total shown for 2004 is for the part year May to December.

Note: Please see Introduction: Technical Note on WRS data.

1.a. Applications

Chart 2 Total re-registrations by quarter (January 2005 - December 2006)



Data for the part year May to December 2004 is not shown in the above chart.

- A total of 88,000 initial applications and re-registrations, excluding outstanding applications, were made in Q4 2006, of which 86,000 (98%) were approved (i.e. the worker's employment was registered), compared to 92,000 and 89,000 (98%) in Q3 2006 and 70,000 and 69,000 (97%) in Q4 2005.
- The total since May 2004 includes 142,000 applications to re-register (from those who have previously registered but have changed employer), 5,000 multiple registrations (from those working for more than one employer simultaneously), and 41,000 multiple re-registrations (from those registering for subsequent, additional jobs, or those who have left their employer and are re-registering for more than one job). These applications account for the difference between the number of applicants and the number of applications.
- Over the reporting period, the number of re-registrations was 20,000 in Q4 2006 compared to 21,000 in Q3 2006 and 15,000 in Q4 2005.

Table 2 Total Re-registrations, May 2004 - December 2006

Period		Number of applications		
		Re-registration	Multiple Re-registration	Total
2004	Total	10,130	3,855	13,985
2005	Q1	9,760	2,395	12,155
	Q2	13,250	3,430	16,680
	Q3	13,430	4,020	17,450
	Q4	14,910	4,100	19,005
2005	Total	51,350	13,940	65,295
2006	Q1	19,080	5,235	24,315
	Q2	21,240	5,550	26,795
	Q3	20,825	5,795	26,620
	Q4	19,790	6,145	25,935
2006	Total	80,935	22,730	103,665

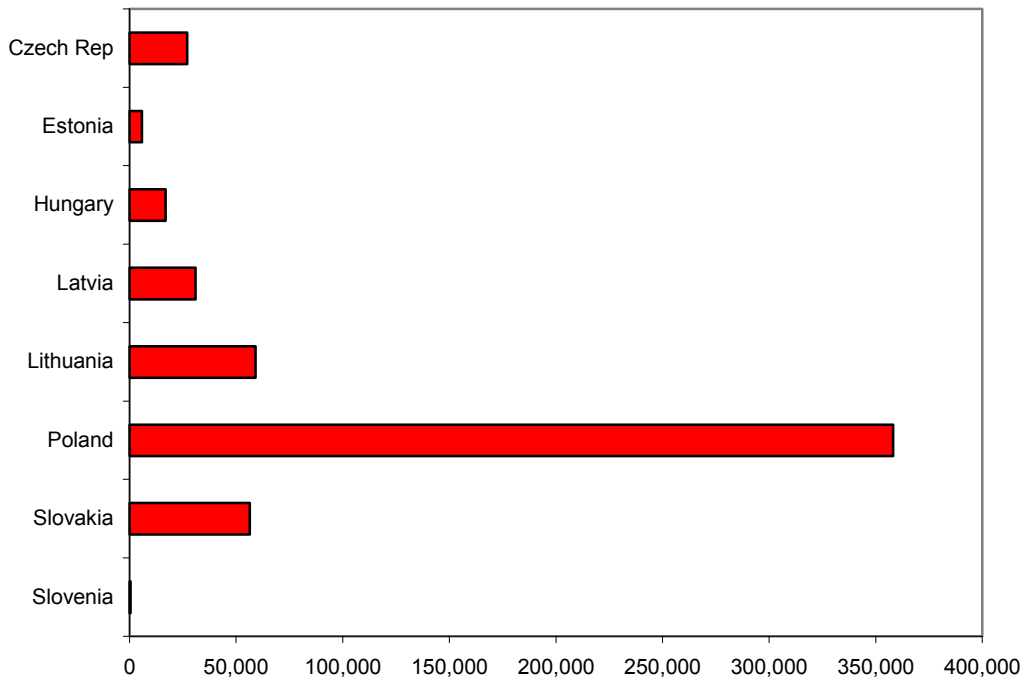
The total shown for 2004 is for the part year May to December.

Note: Please see Introduction: Technical Note on WRS data

Applicant Profile

2. Nationality of applicants

Chart 3 Nationality of applicants, May 2004 - December 2006



- In the period 1 May 2004 to 31 December 2006, the highest proportion of applicants were Polish (65% of the total), followed by Lithuanian (11%) and Slovak (10%) applicants.
- The percentage of Polish nationals in Q4 2006 reached a high of 74% compared to 72% in Q3 2006, 67% in Q4 2005, and 57% in Q4 2004.
- The number of Czech Republic, Lithuanian, Estonian, and Latvian applicants decreased by over 25% during 2006. The greatest decrease was from Estonian applicants (75%).

**Table 3 Nationality of applicants approved by quarter applied,
May 2004 - December 2006**

		Number of applicants								
Period		Czech Rep	Estonia	Hungary	Latvia	Lithuania	Poland	Slovakia	Slovenia	Total
2004	Total	8,255	1,860	3,620	8,670	19,270	71,025	13,020	160	125,880
2005	Q1	2,720	710	1,430	3,030	5,540	23,210	4,805	50	41,495
	Q2	2,715	720	1,585	4,165	7,230	32,850	5,805	30	55,105
	Q3	2,860	600	1,670	3,290	5,720	38,310	6,375	35	58,870
	Q4	2,275	530	1,670	2,470	4,490	32,950	5,050	55	49,485
2005	Total	10,570	2,560	6,355	12,960	22,985	127,320	22,035	170	204,955
2006	Q1	1,865	390	1,435	2,555	4,230	31,890	4,305	55	46,725
	Q2	2,045	340	1,595	2,785	4,470	38,090	5,490	40	54,855
	Q3	2,215	420	1,835	2,255	4,320	45,320	6,235	50	62,645
	Q4	2,065	310	2,085	1,785	3,795	44,550	5,345	40	59,970
2006	Total	8,185	1,460	6,950	9,380	16,810	159,855	21,370	180	224,195
% of Q4 Total		3%	1%	3%	3%	6%	74%	9%	<0.5%	100%

This table shows applicants approved rather than the total number of applications made. The figures are for initial applications only (not multiple applications, where an individual is doing more than one job simultaneously, or re-registrations, where an individual has changed employers).

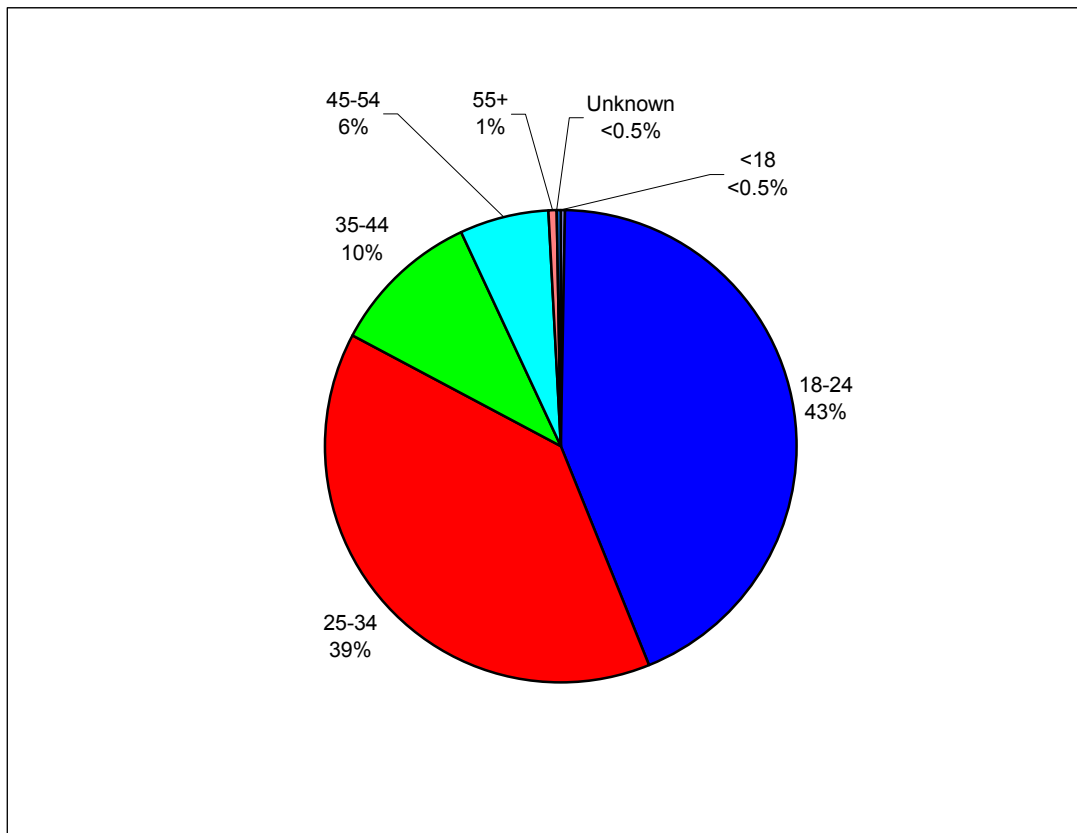
The total shown for 2004 is for the part year May to December.

Note: Please see Introduction: Technical Note on WRS data.

Profile of Registered Workers

3. Age and Gender of registered workers

Chart 4 Age of registered workers, May 2004 – December 2006



- Of those who applied between May 2004 and December 2006, 82% of registered workers were aged 18 – 34. In both Q4 2005 and Q4 2006 this percentage was also 82% and in both instances 42% were in the younger 18-24 age bracket.

Table 4 Age of registered workers, May 2004 - December 2006

Period		Number of registered workers								
		<18	18-24	25-34	35-44	45-54	55-64	65+	Others	Total
2004	Total	320	54,350	49,830	12,655	7,425	1,020	20	260	125,880
2005	Q1	100	15,940	17,285	4,950	2,795	355	10	65	41,495
	Q2	185	23,245	21,740	6,025	3,420	405	5	85	55,105
	Q3	240	29,805	19,740	5,465	3,155	380	5	75	58,870
	Q4	130	20,820	19,520	5,325	3,205	420	5	60	49,485
2005	Total	655	89,810	78,290	21,765	12,570	1,560	20	285	204,955
2006	Q1	110	18,345	19,500	5,195	3,075	425	10	65	46,725
	Q2	175	23,315	21,760	5,660	3,420	440	5	75	54,855
	Q3	295	31,185	21,460	5,775	3,395	440	5	90	62,645
	Q4	150	25,445	23,950	6,090	3,710	540	5	75	59,970
2006	Total	730	98,290	86,670	22,720	13,600	1,845	25	310	224,195

This table shows registered workers rather than the number of applications made. The figures are for initial applications only (not multiple applications, where an individual is doing more than one job simultaneously, nor re-registrations, where an individual has changed employers).

The total shown for 2004 is for the part year May to December.

Note: Please see Introduction: Technical Note on WRS data.

- The male to female ratio for those who applied between May 2004 and December 2006 is 57:43. However, this proportion has varied from a ratio of 53:47 in the first quarter after accession to 60:40 in Q2 2005.

4. Dependants of registered workers²

- A small minority (6%) of registered workers who applied between May 2004 and December 2006 declared that they had dependants living with them in the UK when they applied. Amongst those who did have dependants, the average number of dependants was 1.5.
- The number of dependants as a proportion of the number of registered workers has increased from 7% in the part year 2004 to 16% in Q4 2006, with an average of 10% over the period.

Table 5 Registered workers' dependants, May 2004 - December 2006

Period		Total registered workers	Registered workers with dependants	Number of dependants		
				Under 17	17 and over	Total
2004	Total	125,880	5,485	4,450	4,070	8,520
2005	Q1	41,495	2,045	1,610	1,490	3,095
	Q2	55,105	2,520	1,980	1,885	3,865
	Q3	58,870	2,945	2,370	2,095	4,465
	Q4	49,485	3,185	2,550	2,305	4,855
2005	Total	204,955	10,695	8,510	7,775	16,285
2006	Q1	46,725	3,685	3,060	2,525	5,585
	Q2	54,855	4,210	3,495	2,815	6,310
	Q3	62,645	5,170	4,355	3,435	7,790
	Q4	59,970	6,365	5,280	4,415	9,695
2006	Total	224,195	19,435	16,190	13,185	29,380

This table shows registered workers rather than the number of applications made. The figures are for initial applications only (not multiple applications, where an individual is doing more than one job simultaneously, or re-registrations, where an individual has changed employers).

The total shown for 2004 is for the part year May to December.

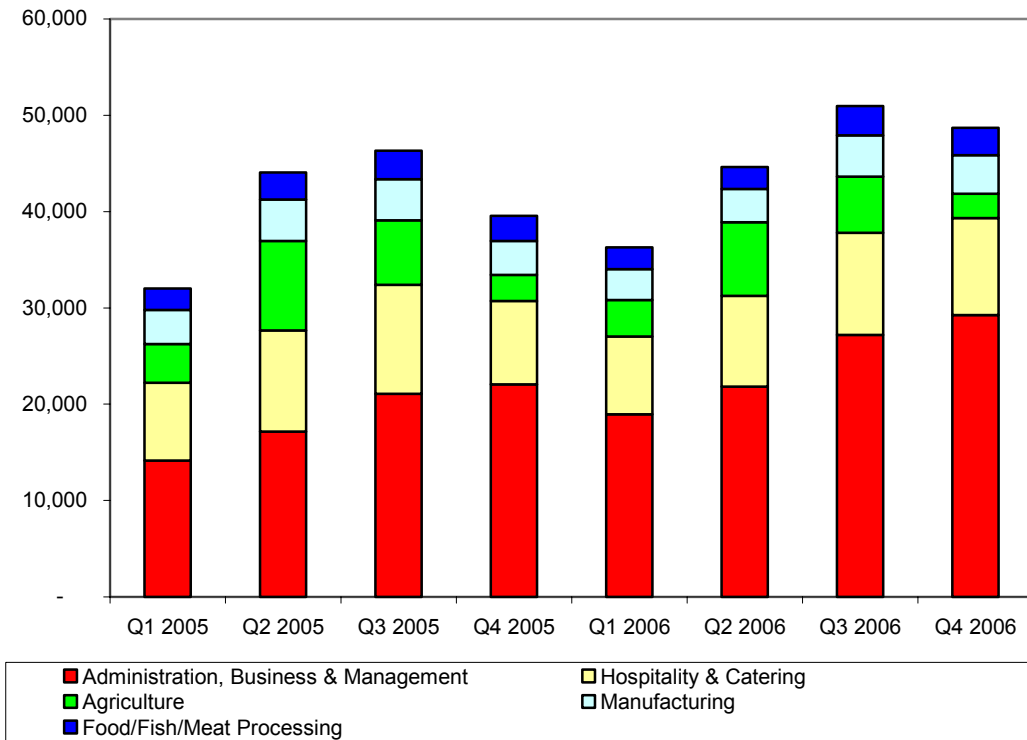
*Note: Previous Accession Monitoring Reports have contained an error, where applicants who have dependants aged 16 and under **and** aged 17 and over have been double counted when calculating the numbers of registered workers with dependants. This has now been corrected in the above table. It is also likely that there is some further 'double counting' of dependants, in the sense that some of those recorded as dependants (particularly older children and spouses) may also have registered in their own right to work in the UK.*

Note: Please see Introduction: Technical Note on WRS data.

² These data are derived from applicants' responses to the question on the WRS application form: If your dependants (children and/or spouse or partner) are living with you in the UK, how many of them are: Aged 16 or under? and Aged 17 or above? The Home Office does not verify these responses.

5. Occupation groups in which registered workers are employed

Chart 5 Top 5 occupation groups in which registered workers are employed, by quarter applied, January 2005 – December 2006



- The top five occupation groups, for registered workers who applied between May 2004 and December 2006, were Administration, Business & Management³ (37%), Hospitality & Catering (20%), Agriculture (11%), Manufacturing (7%) and Food, Fish and Meat processing (5%).
- Administration, Business & Management has overtaken Hospitality & Catering as the group that has employed the most A8 workers since May 2004. The proportion of workers working for employers in the Administration, Business & Management group (which includes workers employed by employment agencies) increased from 25% in 2004 to 49% in the latest quarter. Meanwhile, the proportion in Hospitality and Catering fell from 27% in 2004 to 17% in Q4 2006.
- Agriculture is the other group where there has been a considerable change over the period, reflecting the seasonal nature of the work. The proportion of workers who were employed in Agriculture peaked in the summer months, making up 17% in Q2 2005, and was lowest during the winter months with only 4% in Q4 2006 and 5% in Q4 2005.

³ The majority of workers in the Administration, Business & Management occupation group work for recruitment agencies and could be employed in a variety of occupations. For a full list of occupations please see Annex A of the report.

Table 6 Occupation groups in which registered workers are employed, by quarter applied, May 2004 - December 2006

Occupation group	2004 Total	2005				2005 Total	2006				2006 Total
		Q1	Q2	Q3	Q4		Q1	Q2	Q3	Q4	
Administration, Business & Management	31,235	14,160	17,180	21,085	22,055	74,480	18,950	21,820	27,220	29,230	97,220
Hospitality & Catering	34,310	8,090	10,480	11,320	8,660	38,545	8,100	9,435	10,605	10,065	38,200
Agriculture	16,905	4,000	9,295	6,700	2,710	22,700	3,755	7,650	5,825	2,505	19,735
Manufacturing	9,750	3,550	4,285	4,265	3,505	15,605	3,230	3,435	4,255	4,015	14,930
Food/Fish/Meat Processing	6,480	2,215	2,820	2,950	2,620	10,605	2,240	2,290	3,065	2,860	10,455
Health & Medical	5,550	2,305	2,585	3,295	2,750	10,935	2,795	2,235	2,510	2,250	9,790
Retail	5,355	1,815	2,125	2,535	2,285	8,760	1,975	2,110	2,665	3,030	9,780
Construction & Land	5,185	1,610	1,910	2,095	1,640	7,255	2,150	2,260	2,355	2,110	8,875
Transport	2,725	1,505	1,890	1,830	1,470	6,695	1,420	1,395	1,405	1,470	5,685
Entertainment & Leisure	2,190	890	1,195	1,135	455	3,675	615	910	1,040	565	3,130
Education & Cultural	1,490	445	480	510	490	1,920	595	400	495	535	2,020
Real Estate & Property	535	240	240	255	195	925	210	205	280	440	1,135
Financial Services	425	115	110	135	95	455	140	150	225	170	690
Computer Services	385	100	95	125	100	420	150	105	140	155	550
Extraction Industries	365	85	110	125	120	440	105	140	155	195	595
Security & Protection	345	100	110	195	145	550	120	130	150	150	545
Telecommunications	180	80	30	45	30	185	40	35	65	55	195
Sporting Activities	145	40	15	35	30	120	30	30	30	35	125
Utilities (Gas, Electricity, Water)	125	35	35	50	35	155	40	50	60	40	200
Government	80	25	30	40	35	125	25	30	35	55	145
Law-related Services	85	20	15	20	20	75	10	15	25	25	75
Not Stated	2,030	85	80	115	50	330	30	25	50	15	120
Total	125,880	41,495	55,105	58,870	49,485	204,955	46,725	54,855	62,645	59,970	224,195

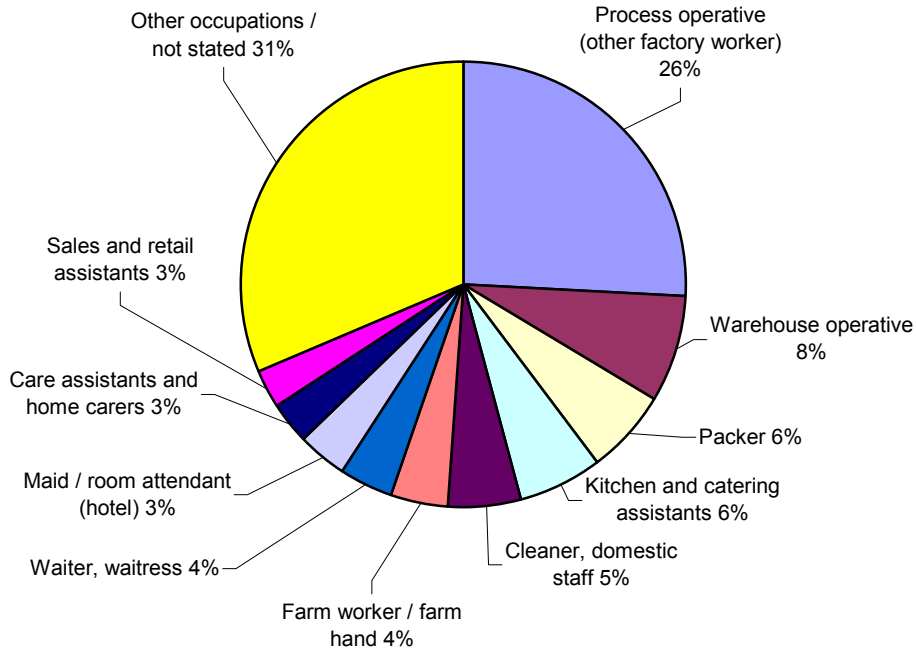
This table shows registered workers rather than the number of applications made. The figures are for initial applications only (not multiple applications, where an individual is doing more than one job simultaneously, or re-registrations, where an individual has changed employers). The total shown for 2004 is for the part year May to December.

Please note that we have renamed the areas where people are working as 'occupation groups' rather than 'sectors', since the latter term does not conform to the National Statistics definition of Standard Industry Codes.

Note: Please see Introduction: Technical Note on WRS data.

6. Occupations in which registered workers are employed

Chart 6 Top 10 occupations in which registered workers are employed, July 2004 - December 2006 (May/June 2004 data not available)



Note: Percentages indicate percentage of all workers registered, July 2004 to December 2006

Note: Previous Accession Monitoring Reports (starting from May 2004 to December 2005 and finishing with May 2004 to September 2006) have shown the percentages as a percentage of workers in the 10 ten occupations in Chart 6, while the note below suggested that the percentages were a percentage of all workers registered. 'Other Occupations' has now been added to the above chart so that the percentages are a percentage of all registered workers.

- The top 20 occupations have remained largely consistent over the period.
- The biggest group of workers registered with the WRS is in general occupations (26%) classified as Process operatives (other factory worker). This is followed by Warehouse Operatives (8%) and Packers (6%).
- Please refer to **Annex A** for a full table of occupations of registered workers who applied between July 2004 and December 2006.

Table 7 Top 20 occupations in which registered workers are employed, by quarter applied, July 2004 – December 2006

Occupation	Number of registered workers										
	2004 Total	2005				2005 Total	2006				2006 Total
		Q1	Q2	Q3	Q4		Q1	Q2	Q3	Q4	
Process operative (other Factory worker)	17,970	10,000	13,100	14,975	15,185	53,260	12,470	13,985	17,280	18,880	62,615
Warehouse Operative	3,810	2,440	2,565	4,100	4,750	13,855	3,660	4,390	6,205	7,235	21,490
Packer	5,515	3,045	3,270	3,725	3,335	13,375	2,625	2,950	3,655	3,835	13,065
Kitchen and catering assistants	5,940	2,465	3,495	3,580	2,875	12,415	2,695	3,225	3,435	3,455	12,810
Cleaner, domestic staff	4,355	2,135	2,475	3,025	2,565	10,200	3,150	2,920	3,355	3,450	12,875
Farm worker/ Farm hand	3,350	1,705	4,170	2,425	1,030	9,330	1,915	3,855	2,780	1,025	9,575
Waiter, waitress	4,980	1,705	2,030	2,255	1,670	7,660	1,530	1,765	2,000	2,025	7,320
Maid / Room attendant (hotel)	3,375	1,305	1,910	2,140	1,705	7,060	1,665	1,855	2,055	2,005	7,580
Care assistants and home carers	2,580	1,385	1,590	2,075	1,835	6,885	1,765	1,480	1,565	1,390	6,200
Sales and retail assistants	2,535	1,105	1,400	1,615	1,285	5,405	1,245	1,415	1,720	1,865	6,245
Labourer, building	2,080	1,140	1,445	1,550	1,145	5,280	1,505	1,795	1,780	1,690	6,770
Crop harvester	1,235	610	2,205	1,655	275	4,745	450	1,820	1,210	180	3,660
Food processing operative (fruit / veg)	1,600	705	1,010	895	760	3,370	640	755	815	655	2,865
Bar staff	1,950	665	810	890	610	2,975	550	585	715	610	2,460
Food processing operative (meat)	1,525	565	675	655	660	2,555	490	535	790	705	2,520
Chef, other	1,380	545	625	690	535	2,395	495	605	605	620	2,325
Administrator, general	1,000	400	465	480	435	1,780	395	480	580	440	1,895
Driver, HGV (Heavy Goods Vehicle)	730	570	635	555	460	2,220	350	355	420	445	1,570
Fruit picker (farming)	545	125	1,170	855	155	2,305	140	710	600	90	1,540
Carpenter / joiner	440	255	295	290	250	1,090	460	410	595	440	1,905
TOTAL TOP 20	66,890	32,865	45,330	48,425	41,520	168,140	38,190	45,895	52,165	51,040	187,290
Total – Other Occupations / Not Stated	20,160	8,630	9,770	10,445	7,965	36,810	8,535	8,960	10,485	8,930	36,910

This table shows registered workers rather than the number of applications made. The figures are for initial applications only (not multiple applications, where an individual is doing more than one job simultaneously, nor re-registrations, where an individual has changed employers).

The total shown for 2004 is for the part year May to December.

Note: Please see Introduction: Technical Note on WRS data

7. Registered workers' hours of work⁴ and wages⁵

- 97% of registered workers who applied between May 2004 and December 2006 were working full time (more than 16 hours a week).⁶
- The majority (78%) of registered workers were earning £4.50 - £5.99 per hour.

8. Proportion of registered workers in temporary/permanent employment⁷

- For those who applied in the period from 1 May 2004 to 31 December 2006, 50% of registered workers were in temporary employment and 47% were in permanent employment (3% did not provide this information).
- The proportion of registered workers employed on a temporary or permanent basis varied considerably between occupation groups. Between May 2004 and December 2006 in Agriculture, 70% were in temporary employment and 26% in permanent employment. In Hospitality and Catering the pattern was reversed, with only 20% in temporary employment and 77% in permanent employment.

9. Intended Length of Stay

The following information is taken from details on the WRS application forms on the applicant's intended length of stay in the UK for workers who applied in 2006. 75% of workers registering during 2006 gave an intended length of their stay.

- 56,000 (25%) answered "do not know".
- 125,000 (55%) ticked "less than 3 months".
- 4,000 (2%) ticked "3 to 5 months".
- 7,000 (3%) ticked "6 to 11 months".
- 12,000 (5%) ticked "1 to 2 years".
- 22,000 (10%) ticked "more than 2 years".

Extra care should be taken when using the above data as the applicants' situation may change significantly from the time when the application form is completed, which may affect their continued stay in the UK.

The data given above are derived from provisional management information and subject to change.

⁴ These data are derived from applicants' responses to the question on the WRS application form: How many hours per week do you normally work? The Home Office does not verify these responses.

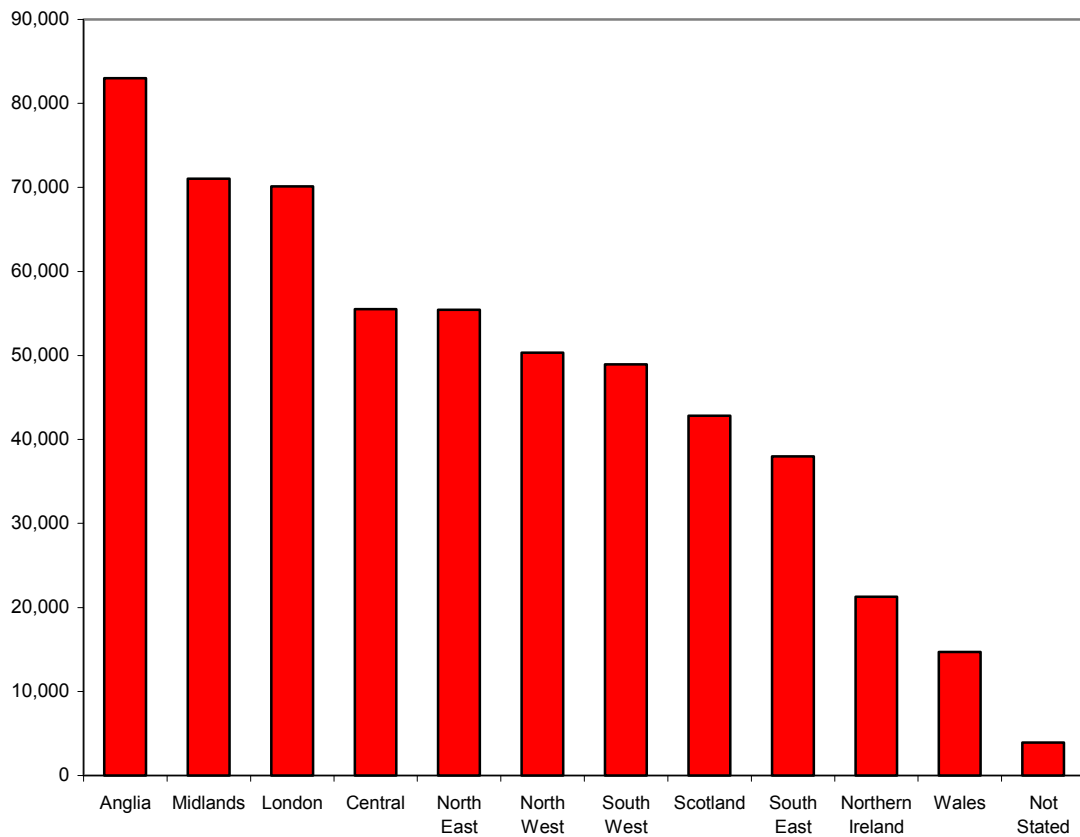
⁵ These data are derived from applicants' responses to the question on the WRS application form: How much is your hourly rate, before deductions? The Home Office does not verify these responses.

⁶ The 97% is likely to be an underestimate. The proportion of registered workers working part time is likely to be lower than 3%, because some were doing more than one part time job, simultaneously. The data published here only takes account of one of those jobs – so the total hours an individual was working will in some cases be more than 16.

⁷ These data are derived from applicants' responses to the question on the WRS application form: What type of employment are you undertaking? (Please indicate by ticking the appropriate box). The Home Office does not verify these responses.

10. Geographical distribution of employers of registered workers⁸

Chart 7 Geographical distribution of employers of registered workers, May 2004 - December 2006



- Between May 2004 and December 2006 Anglia has had the greatest number of workers registering with employers in the area, with 15% of the total. This is followed by the Midlands and London both with 13% of the Workers registered.
- Northern Ireland and Wales had the fewest registrations with respectively 4% and 3% of the total.
- The proportion applying to London based employers, however, fell from 17% in Q4 2004 to just 10% in Q4 2006. At the same time the proportion and number applying elsewhere has increased and in the latest quarter the highest proportion of workers was in the Midlands region.

⁸ Regions are based on the applicant's employer's postcode, where supplied. Regions are defined according to the Post Office's Postal Address Book regions.

**Table 8 Geographical distribution of employers of registered workers,
May 2004 - December 2006**

		Number of registered workers												
Period		Anglia	Midlands	London	Central	North East	North West	South West	Scotland	South East	Northern Ireland	Wales	Not Stated	Total
2004	Total	21,915	11,710	25,470	13,885	9,060	7,670	9,700	8,150	11,200	3,660	2,430	1,025	125,880
2005	Q1	6,115	5,645	6,095	4,530	3,890	3,350	3,560	2,285	2,720	1,840	1,120	345	41,495
	Q2	8,485	6,845	6,075	5,555	4,900	4,900	5,465	4,545	3,975	2,460	1,410	485	55,105
	Q3	8,430	7,070	5,935	5,935	6,620	5,870	5,375	5,285	4,010	2,325	1,560	455	58,870
	Q4	6,895	7,200	5,350	4,615	5,995	5,015	3,750	3,775	2,965	2,220	1,400	310	49,485
2005	Total	29,925	26,755	23,455	20,640	21,405	19,135	18,150	15,895	13,670	8,845	5,490	1,595	204,955
2006	Q1	6,425	6,320	5,090	4,975	5,275	4,715	3,995	3,480	2,780	2,035	1,410	230	46,725
	Q2	7,430	7,510	4,935	5,385	5,610	5,470	6,015	5,075	3,340	2,100	1,645	340	54,855
	Q3	8,565	9,265	5,405	5,555	7,135	6,730	6,160	5,570	3,725	2,295	1,900	345	62,645
	Q4	8,740	9,470	5,765	5,065	6,950	6,615	4,905	4,645	3,290	2,335	1,825	360	59,970
2006	Total	31,160	32,570	21,195	20,980	24,970	23,530	21,070	18,765	13,130	8,765	6,785	1,280	224,195

This table shows registered workers rather than the number of applications made. The figures are for initial applications only (not multiple applications, where an individual is doing more than one job simultaneously, or re-registrations, where an individual has changed employers).

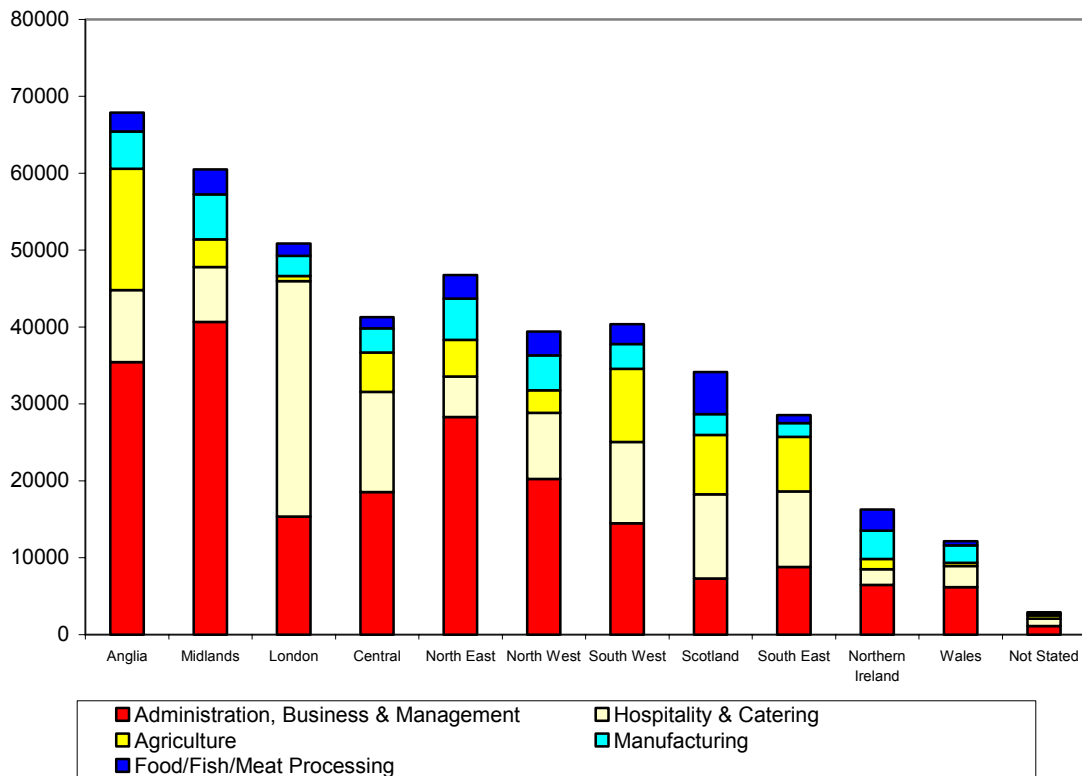
The total shown for 2004 is for the part year May to December.

Please note that changes have been made to the way that regional information is recorded by refining the linkage to postcode information to ensure greater accuracy. This has resulted in changes to the data shown under some regions and 'Not stated' since the second Quarter 2004, but does not change the totals of previously published information.

Note: Please see Introduction: Technical Note on WRS data.

11. Geographical distribution of employers of registered workers by occupation group⁹

Chart 8 Top 5 occupation groups – geographical distribution of employers of registered workers. Cumulative total, May 2004 - December 2006



Regional distribution within occupation groups

- 28% of those working in Hospitality and Catering were working for employers in London – far more than in any other region. The next highest proportions were employed in Central England, Scotland and the South West (12%, 10% and 10% respectively).
- 27% of those working in Agriculture were working for employers in Anglia, followed by the South West (16%), whereas only 1% of Agriculture workers were in London.
- 20% of those working in Administration, Business and Management were working for employers based in the Midlands, followed by 17% in Anglia and 14% in the North East.

Occupational distribution within regions

- 44% of those working for employers located in London were working in Hospitality and catering compared with 26% of those working in Scotland, but only 10% in Northern Ireland, the Midlands and North East.
- 57% of those working for employers located in the Midlands were working in Administration, Business and Management (including employment agencies), as were 51% of those in the North East, but only 22% in London and 17% in Scotland.
- 19% of those working for employers in Anglia, the South West and the South East were working in Agriculture and 18% in Scotland.

⁹ Regions are based on the applicant's employer's postcode, where supplied. Regions are defined according to the Post Office's Postal Address Book regions.

Table 9 Top 10 Occupation groups – geographical distribution of employers of registered workers, Cumulative total, May 2004 - December 2006

Occupation Group	Number of registered workers												Total
	Anglia	Midlands	London	Central	North East	North West	South West	Scotland	South East	Northern Ireland	Wales	Not Stated*	
Admin, Bus & Man Services	35,450	40,685	15,350	18,560	28,315	20,250	14,465	7,310	8,800	6,475	6,180	1,105	202,940
Hospitality & Catering	9,370	7,100	30,635	13,020	5,265	8,595	10,600	10,925	9,830	2,025	2,720	970	111,055
Agriculture Activities	15,780	3,615	635	5,100	4,740	2,960	9,485	7,750	7,095	1,345	420	410	59,335
Manufacturing	4,835	5,880	2,640	3,135	5,370	4,510	3,240	2,680	1,795	3,665	2,280	260	40,290
Food/ Fish/ Meat Processing	2,435	3,210	1,610	1,470	3,090	3,085	2,600	5,485	1,045	2,775	540	185	27,535
Health & Medical Services	3,540	1,970	2,880	4,225	2,400	1,960	2,735	1,840	2,745	890	885	200	26,275
Retail & Related Services	4,000	2,230	5,535	2,465	1,555	2,110	1,435	1,275	1,860	780	400	250	23,895
Construction & Land Services	1,900	1,600	2,795	2,755	1,615	2,450	1,180	2,800	1,460	2,245	385	140	21,315
Transport	2,550	2,380	1,265	1,300	1,400	2,065	1,095	1,075	1,060	530	265	125	15,110
Entertainment & Leisure Services	960	805	1,505	1,135	570	1,245	1,045	500	755	70	335	80	8,995
Total Top Ten	80,820	69,470	64,855	53,160	54,315	49,230	47,880	41,640	36,440	20,800	14,415	3,725	536,745
Total – Other Occupations / Not Stated	2,180	1,565	5,270	2,345	1,120	1,105	1,040	1,170	1,560	470	290	175	18,285

This table shows registered workers rather than the number of applications made. The figures are for initial applications only (not multiple applications, where an individual is doing more than one job simultaneously, or re-registrations, where an individual has changed employers).

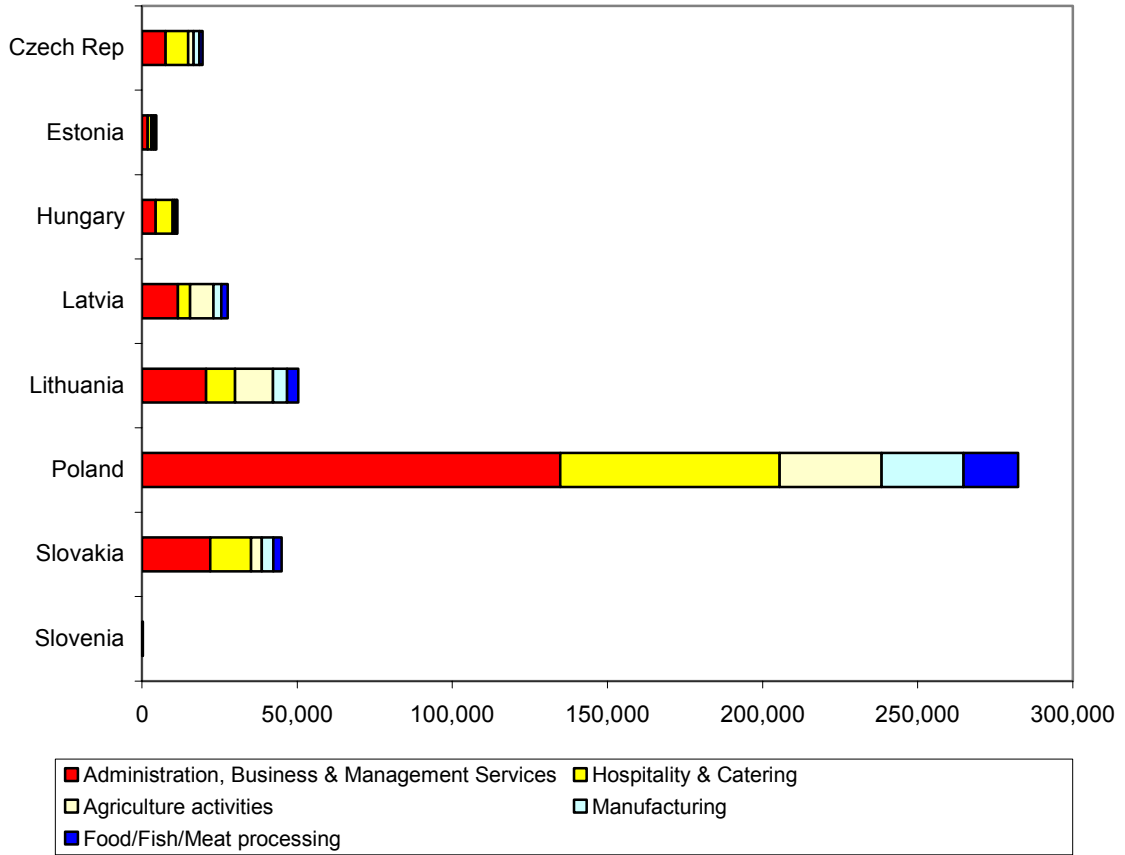
*Postcode not supplied.

Note: Regions are defined according to the Post Office's Postal Address Book regions. Data are based on employer's postcode, where supplied.

Note: Please see Introduction: Technical Note on WRS data.

12. Nationality of registered workers by occupation group

Chart 9 Top 5 Occupation groups – Nationality of registered workers. Cumulative total, May 2004 - December 2006



- Polish workers made up the largest proportion in every occupation group, with 66% of Administration, Business and Management Services (including employment agencies) and 64% in Hospitality and Catering. 65% of workers registered with the WRS were Polish.
- A greater proportion of workers from Lithuania and Latvia worked in Agriculture than any other nationality. 21% of Lithuanians and 24% of Latvians worked in Agriculture compared to 11% of all workers.

**Table 10 Top 10 Occupation groups – Nationality of registered workers.
Cumulative total, May 2004 - December 2006**

Occupation group	Number of registered workers								
	Czech Rep	Estonia	Hungary	Latvia	Lithuania	Poland	Slovakia	Slovenia	Total
Admin, Bus & Man Services	7,600	1,805	4,390	11,580	20,685	134,745	22,030	100	202,940
Hospitality & Catering	7,275	1,160	5,460	3,940	9,270	70,700	13,105	145	111,055
Agriculture	1,775	705	595	7,530	12,245	32,945	3,540	5	59,335
Manufacturing	1,825	605	730	2,520	4,565	26,350	3,670	30	40,290
Food/Fish/ Meat processing	1,010	310	240	2,105	3,615	17,600	2,650	5	27,535
Health & Medical Services	1,820	350	1,235	520	1,580	17,580	3,160	35	26,275
Retail & Related Services	1,410	235	955	735	1,800	16,015	2,700	45	23,895
Construction & Land Services	1,020	200	660	915	2,425	14,380	1,695	20	21,315
Transport	785	165	670	240	805	11,625	805	20	15,110
Entertainment & Leisure	850	125	660	375	750	5,075	1,150	20	8,995
Total Top Ten	25,365	5,660	15,585	30,455	57,735	347,010	54,500	425	536,745
Total – Other Occupations / Not Stated	1,650	220	1,335	555	1,335	11,185	1,925	85	18,285

This table shows registered workers rather than the number of applications made. The figures are for initial applications only (not multiple applications, where an individual is doing more than one job simultaneously, or re-registrations, where an individual has changed employers).

Note: Please see Introduction: Technical Note on WRS data.

National Insurance Numbers

13. National Insurance Numbers allocated and purpose of allocation

- Between May 2004 and December 2006, the total number of National Insurance Number applications increased each quarter, bar two, to an overall total of just under 560,000.
- 98.2% of National Insurance Numbers were allocated for employment purposes, 0.7% for benefit purposes and 1.1% for tax credit purposes.
- For the period 1st May 2004 to 31st December 2006, 55.7% of applicants were male and 44.3% were female. The percentage of 18-34 year olds was 82.9%.

Table 11 National Insurance Numbers allocated and refused, May 2004 – December 2006

Period		Total Allocated	Allocated for employment purposes	Allocated for benefit purposes	Allocated for tax credit purposes	Total Refused
2004	Total	63,479	62,539	588	352	1,611
2005	Q1	46,394	45,833	297	264	588
	Q2	55,623	54,812	495	316	588
	Q3	60,399	59,743	411	245	539
	Q4	59,402	58,133	446	823	639
2005	Total	221,818	218,521	1,649	1,648	2,354
2006	Q1	62,075	60,830	359	886	606
	Q2	57,081	55,855	394	832	827
	Q3	71,007	69,613	416	978	1,488
	Q4	76,460	74,611	529	1,320	1,070
2006	Total	266,623	260,909	1,698	4,016	3,991
Total		551,920	541,969	3,935	6,016	7,956

Note:

Reporting periods are as follows.

- 2004 = 1 May- 29 December 2004.
- Q1 2005 = 30 December 2004 - 30 March 2005, Q2 2005 = 31 March– 29 June 2005, Q3 2005 = 30 June - 30 September 2005, Q4 2005 = 1 October - 31 December 2005.
- Q1 2006 = 1 January - 31 March 2006, Q2 2006 = 1 April - 30 June 2006, Q3 = 1 July - 30 September 2006, Q4 2006 = 1 October - 31 December 2006.

14. National Insurance Number applications by region

**Table 12 National Insurance Numbers allocated and refused by region,
May 2004 – December 2006**

Period	London	South East	East of England	Scotland	North West	East Midlands	West Midlands	South West	Yorks & Humber	Wales	North East	Fast-track*	Total
2004 Total	20,816	10,645	7,175	3,701	4,103	4,791	4,027	4,200	2,467	1,605	569	991	65,090
2005 Q1	11,645	5,333	5,829	3,610	4,134	4,293	3,198	3,371	2,976	1,498	474	621	46,982
Q2	15,241	6,984	6,301	4,710	3,754	5,004	4,003	3,440	3,706	1,614	614	840	56,211
Q3	16,964	7,820	4,428	5,865	6,634	5,441	4,355	3,830	2,906	1,282	757	656	60,938
Q4	14,347	8,110	4,185	6,396	5,853	6,143	4,499	4,181	2,010	2,297	937	1,083	60,041
2005 Total	58,197	28,247	20,743	20,581	20,375	20,881	16,055	14,822	11,598	6,691	2,782	3,200	224,172
2006 Q1	15,513	8,784	6,563	4,809	4,514	5,466	5,346	4,377	3,345	1,936	1,091	937	62,681
Q2	13,266	6,522	5,948	5,840	5,781	3,993	4,338	3,854	4,733	1,342	1,302	989	57,908
Q3	16,168	7,355	8,134	8,546	7,407	5,129	5,771	3,951	5,590	1,544	1,518	1,382	72,495
Q4	16,838	8,017	7,182	8,468	7,492	6,180	5,980	6,436	5,873	2,005	1,217	1,842	77,530
2006 Total	61,785	30,678	27,827	27,663	25,194	20,768	21,435	18,618	19,541	6,827	5,128	5,150	270,614
Total	140,798	69,570	55,745	51,945	49,672	46,440	41,517	37,640	33,606	15,123	8,479	9,341	559,876

Note:

Reporting periods are as follows.

- 2004 = 1 May- 29 December 2004.
- Q1 2005 = 30 December 2004 - 30 March 2005, Q2 2005 = 31 March - 29 June 2005, Q3 2005 = 30 June - 30 September 2005, Q4 2005 = 1 October - 31 December 2005.
- Q1 2006 = 1 January - 31 March 2006, Q2 2006 = 1 April - 30 June 2006, Q3 2006 = 1 July - 30 September 2006, Q4 2006 = 1 October – 31 December 2006.

*Fast-track applications relate to highly skilled / specialist employment only. Specific regions are unknown.

Jobcentre Plus is currently divided into the eleven regions shown. A customer's postcode determines to which region s/he is allocated.

Benefits and Tax Credits

15. Applications for tax-funded, income-related benefits

- Table 13 below shows applications for income-based Jobseeker’s Allowance, Income Support and State Pension Credit.
- Between May 2004 and December 2006, there were 3,106 applications for Income Support, 6,289 applications for income-based Jobseeker’s Allowance and 162 applications for State Pension Credit.
- 1,590 of these applications were allowed on initial decision to proceed for further consideration of whether the claimants meet the other conditions of entitlement. In addition to these, 205 applications were allowed on re-consideration / appeal.
- In all, so far 18.7% of applications have been allowed and the majority (81.3%) were disallowed on the basis of the Right to Reside and Habitual Residence Tests.
- Most applications were from Polish (44.7%), Czech (15.8%) and Lithuanian (13.7%) nationals.

**Table 13 Applications for tax-funded, income-related benefits,
May 2004 – December 2006**

	2004	2005				2006				Total
		Q1	Q2	Q3	Q4	Q1	Q2	Q3	Q4	
Applications for Income Support										
Disallowed*	204	134	123	251	237	280	355	391	598	2,573
Allowed to proceed for further processing	5	7	4	5	22	62	88	160	180	533
Total	209	141	127	256	259	342	443	551	778	3,106
Applications for income-based Jobseeker’s Allowance										
Disallowed*	537	268	358	497	423	603	833	776	773	5,068
Allowed to proceed for further processing	18	5	12	43	71	158	257	295	362	1,221
Total	555	273	370	540	494	761	1,090	1,071	1,135	6,289
Applications for State Pension Credit										
Disallowed*	4	7	5	13	15	8	20	21	28	121
Allowed to proceed for further processing	0	0	0	1	1	4	5	21	9	41
Total	4	7	5	14	16	12	25	42	37	162
Total disallowed*	745	409	486	761	675	891	1,208	1,188	1,399	7,762
Total allowed to proceed for further processing	23	12	16	49	94	224	350	476	551	1,795
Total	768	421	502	810	769	1,115	1,558	1,664	1,950	9,557

*On the Right to Reside and Habitual Residence tests.

Reporting periods are as follows.

- 2004 = 1 May- 31 December 2004.
- Q1 2005 = 1 January - 31 March 2005, Q2 2005 = 1 April - 30 June 2005, Q3 2005 = 1 July - 30 September 2005, Q4 2005 = 1 October- 31 December 2005.
- Q1 2006 = 1 January - 31 March 2006, Q2 2006 = 1 April - 30 June 2006, Q3 2006 = 1 July - 30 September 2006, Q4 2006 = 1 October – 31 December 2006.

16. Nationality of applicants for tax-funded, income-related benefits**Table 14 Applications for tax-funded, income-related benefits by nationality, May 2004 - December 2006**

Period		Czech Rep	Estonia	Hungary	Latvia	Lithuania	Poland	Slovakia	Slovenia	Total
2004	Total	246	23	23	42	84	262	82	6	768
2005	Q1	64	14	18	29	52	166	77	1	421
	Q2	79	11	34	51	75	198	53	1	502
	Q3	177	14	32	62	101	338	84	2	810
	Q4	115	12	33	67	117	315	105	5	769
2005	Total	435	51	117	209	345	1,017	319	9	2,502
2006	Q1	171	13	28	93	160	513	130	7	1,115
	Q2	201	22	40	132	209	739	206	9	1,558
	Q3	225	30	59	102	222	822	196	8	1,664
	Q4	234	27	60	174	298	920	232	5	1,950
2006	Total	831	92	187	501	889	2,994	764	29	6,287
Total		1,512	166	327	752	1,318	4,273	1,165	44	9,557

Reporting periods are as follows.

- 2004 = 1 May- 31 December 2004.
- Q1 2005 = 1 January - 31 March 2005, Q2 2005 = 1 April - 30 June 2005, Q3 2005 = 1 July - 30 September 2005, Q4 2005 = 1 October- 31 December 2005.
- Q1 2006 = 1 January - 31 March 2006, Q2 2006 = 1 April - 30 June 2006, Q3 2006 = 1 July - 30 September 2006, Q4 2006 = 1 October – 31 December 2006.

17. Applications for tax-funded, income-related benefits by region

Table 15 Applications for tax-funded, income-related benefits by region, May 2004 - December 2006

Period	London	Yorks & Humber	North West	South East	East of England	West Midlands	East Midlands	Scotland	North East	South West	Wales	TOTAL
2004 Total	234	69	125	85	44	47	32	38	49	22	23	768
2005 Q1	108	73	52	28	37	30	28	24	10	21	10	421
Q2	168	41	79	40	35	53	21	30	13	13	9	502
Q3	275	77	98	55	82	50	50	47	27	23	26	810
Q4	240	89	90	83	59	41	57	40	22	21	27	769
2005 Total	791	280	319	206	213	174	156	141	72	78	72	2,502
2006 Q1	314	121	141	79	101	73	91	84	34	44	33	1,115
Q2	394	252	172	138	156	104	117	81	52	42	50	1,558
Q3	483	212	176	134	157	140	124	105	42	50	41	1,664
Q4	640	246	184	186	147	131	126	119	79	58	34	1,950
2006 Total	1,831	831	673	537	561	448	458	389	207	194	158	6,287
Total	2,856	1,180	1,117	828	818	669	646	568	328	294	253	9,557

Reporting periods are as follows.

- 2004 = 1 May- 31 December 2004.
- Q1 2005 = 1 January - 31 March 2005, Q2 2005 = 1 April - 30 June 2005, Q3 2005 = 1 July - 30 September 2005, Q4 2005 = 1 October- 31 December 2005.
- Q1 2006 = 1 January - 31 March 2006, Q2 2006 = 1 April - 30 June 2006, Q3 2006 = 1 July - 30 September 2006, Q4 2006 = 1 October – 31 December 2006.

Jobcentre Plus is currently divided into the eleven regions shown. A customer's postcode determines to which region they are allocated.

18. Applications for Child Benefit

- During the period May 2004 to December 2006, 66% of applications were approved and 18% were rejected.
- There are cases where an application may be processed in a different month to that in which it was received. This is because once a Child Benefit application is made by an A8 national, the Child Benefit Office makes further enquiries about the applicant's date of arrival in the UK and employment status, in order to ascertain whether or not the applicant passes the right to reside test.
- The total number of children involved in applications approved this quarter was 13,852.

Table 16 Applications for Child benefit, May 2004 - December 2006

Period		Applications Received	Applications Approved	Applications Rejected*	Applications Terminated
2004	Total	5,089	2,086	907	23
2005	Q1	3,059	1,484	362	21
	Q2	4,074	1,451	602	16
	Q3	6,834	3,466	993	39
	Q4	8,523	3,962	1,205	121
2005	Total	22,490	10,363	3,162	197
2006	Q1	10,353	7,710	1,932	182
	Q2	7,063	7,121	1,896	125
	Q3	11,686	8,168	1,930	159
	Q4	12,081	9,804	2,590	113
2006	Total	41,183	32,803	8,348	579
Total		68,762	45,252	12,417	799

*Includes withdrawn claims.

This Table includes all identified claims from A8 nationals, and is not restricted to those required to register with the Worker Registration Scheme. The Table shows counts of events occurring in each period, not the results of claims arriving in that period. If an A8 national appears in more than one claim then all his/her claims are included in this Table.

The total shown for 2004 is for the part year May to December.

19. Applications for Tax Credits

- Between May 2004 and December 2006, 61% of applications for tax credits were approved and 8% were rejected.

Table 17 Applications for Tax Credits, May 2004 – December 2006

Period		Applications Received	Applications Approved	Applications Rejected
2004	Total	940	252	185
2005	Q1	1,184	502	126
	Q2	1,316	1,027	100
	Q3	1,815	1,179	229
	Q4	2,775	1,836	164
2005	Total	7,090	4,544	619
2006	Q1	8,068	6,127	593
	Q2	5,016	3,086	334
	Q3	8,975	3,503	603
	Q4	7,373	5,173	732
2006	Total	29,432	17,889	2,262
Total		37,462	22,685	3,066

This table includes all identified claims from A8 nationals, and is not restricted to those required to register with the Worker Registration Scheme. The table shows counts of events occurring in each period, not the results of claims arriving in that period. If an A8 national appears in more than one claim then all his/her claims are included in this table.

The total shown for 2004 is for the part year May to December.

Note: Up to the previous report, this table included a column showing the number of "Terminated" tax credits applications. However, it has come to light that the data available on these applications are only partial, and the column has therefore been withdrawn.

Housing and Homelessness support

20. Local Authority lettings¹⁰

- The May 2004 to September 2006¹¹ total of 173 lettings to A8 nationals represents 0.05% of the average number of lettings to all new tenants over a typical 29 month period.

**Table 18 Local Authority lettings by reason, England,
May 2004 – September 2006**

Period		Currently legally employed	Self- employed/ provider of services	Recipient of services	Other	Total
2004	Total	29	0	0	4	33
2005	Q1	9	1	0	0	10
	Q2	7	1	0	7	15
	Q3	12	0	1	4	17
	Q4	19	0	0	0	19
2005	Total	47	2	1	11	61
2006	Q1	13	1	0	2	16
	Q2	18	0	..	0	18
	Q3	42	1	..	2	45
Total		149	4	1	19	173

The total shown for 2004 is for the part year May to December.

All data are provisional.

¹⁰ Estimates are NOT made for non-response by Local Authorities on lettings. Q3 2006 response rate was 81%.

¹¹ Data currently collected on the CLG's P1E form, and only available up to September 2006.

21. Homelessness assistance¹²

- The May 2004 to September 2006¹³ total of 1,781 decisions on A8 applications for homelessness assistance represents 0.3% of the total number of homelessness decisions over the 29 month period.

Table 19 Decisions on applications for assistance^{14, 15}, England, May 2004 – September 2006

Period		Main duty owed to Applicant	Applicant not owed a main duty	Total
2004	Total	178	277	455
2005	Q1	38	88	126
	Q2	34	74	108
	Q3	66	119	185
	Q4	70	104	174
2005	Total	208	385	593
2006	Q1	67	162	229
	Q2	71	153	224
	Q3	91	189	280
Total		615	1,166	1,781

The total shown for 2004 is for the part year May to December.

All data are provisional.

¹² Estimates ARE made for non-response by Local Authorities on homelessness assistance.

¹³ Data currently collected on CLG's P1E form, and only available up to September 2006.

¹⁴ Under the homelessness provisions of the 1985 and 1996 Housing Acts.

¹⁵ 'Main duty owed' means that the local authority is required to secure accommodation for applicant and their household.

- The May 2004 to September 2006¹⁶ total of 615 A8 acceptances represents 0.3% of the total number of acceptances of homelessness applications over the 29 month period.

Table 20 Homeless households owed a main duty¹⁷ by reason for eligibility, England, May 2004 – September 2006

Period		Currently legally employed	Self- employed/ provider of services	Recipient of services	Other	Total
2004	Total	123	6	2	47	178
2005	Q1	30	1	0	7	38
	Q2	26	1	0	7	34
	Q3	47	0	2	17	66
	Q4	49	3	0	18	70
2005	Total	152	5	2	49	208
2006	Q1	48	0	0	19	67
	Q2	52	1	..	18	71
	Q3	76	2	..	13	91
Total		451	14	4	146	615

The total shown for 2004 is for the part year May to December.

All data are provisional.

¹⁶ Data currently collected on CLG's P1E form, and only available up to September 2006.

¹⁷ 'Main duty owed' means that the local authority is required to secure accommodation for applicant and their household.

ANNEX A

All occupations in which registered workers are employed, Total July 2004 – December 2006 (May and June 2004 unavailable)

OCCUPATION (In alphabetical order)	TOTAL July 2004 to December 2006
Accountant, certified	30
Accountant, chartered	10
Accountant, financial	155
Accountant, trainee	160
Actor	5
Actuary	5
Administrator (utilities)	30
Administrator / receptionist, medical	245
Administrator, (government and related)	50
Administrator, comms / marketing / advertising	445
Administrator, finance	870
Administrator, financial services	250
Administrator, general	4,675
Administrator, hospital	65
Administrator, Human Resources	470
Administrator, IT	380
Administrator, office	1,770
Administrator, records	330
Administrator, sports and leisure	130
Administrator, university	75
Agricultural machinery operator	1,115
Air steward / stewardess	220
Airport staff	205
Alternative / complementary medicine specialist	20
Anaesthetist	130
Animal husbandry	610
Architect	285
Architectural technician	300
Artist / sculptor	75
Arts officer, producers or director	50
Auditor	40
Author, writer	10
<hr/>	
Baker	2,345
Bank manager	15
Banker, business	25
Banker, international	20
Banker, investment	40
Banker, merchant	†
Banker, personal	15
Bar staff	7,380
Barrister	25
Beautician	195
Bricklayer / mason	1,240
Butcher / meat cutter	2,115
<hr/>	
Call centre agent / operator	700
Camera person / photographer	45
Care assistants and home carers	15,655
Caretaker, school	90

Carpenter / joiner	3,430
Caseworker (legal)	10
Cashier (bank, building society)	120
Cashier / check-out operator	1,595
Caterer, higher education	15
Caterer, school	55
Chef, head	510
Chef, other	6,100
Chef, second	290
Chemical engineer	145
Childminders and related occupations	1,000
Circus performer	15
Circus rigger	70
Civil engineer	435
Cleaner, domestic staff	27,430
Cold store operative	65
Conductor (railways)	15
Conductor, bus	25
Construction materials delivery	135
Constructor, road	215
Constructor, roofing	230
Constructor, steel	685
Consultant, hospital	175
Crop harvester	9,645
<hr/>	
Dancer or choreographer	15
Deliveryman	375
Dental hygienist	55
Dental nurse	300
Dental practitioner	340
Detention / custody guard / officer	10
Dietician	†
Director / senior executive	160
Dock worker	60
Doctor (hospital)	530
Driver, bus	2,650
Driver, coach	155
Driver, crane	50
Driver, delivery van	3,400
Driver, fork-lift	720
Driver, HGV (Heavy Goods Vehicle)	4,520
Driver, PCV (Passenger Carrying Vehicle)	840
Driver, taxi	70
Driver, train	5
Driver, underground	†
<hr/>	
Electrician	530
Engineer, electrical	175
Engineer, gas	15
Engineer, hardware (computer)	240
Engineer, oil and natural gas	80
Engineer, other transport related	380
Engineer, railway	65
Engineer, software	400
Engineer, water	15
Entertainer	345
<hr/>	
Farm worker / farm hand	22,250
Financial adviser	115
Financial consultant	150

Fisherman	45
Fishmonger / filleter / gutter	985
Fitness coach	90
Floorer and wall tiler	180
Flower picker	965
Food processing operative (fruit / veg)	7,840
Food processing operative (meat)	6,595
Foreign language teacher (private)	25
Forestry workers	135
Fruit picker (farming)	4,390
<hr/>	
Gardener / landscape gardener	1,610
General Practitioner	95
Groundsman	530
<hr/>	
Hairdresser or related occupation	340
Handyman, general (building and contracting)	1,720
Hotel porter	3,090
<hr/>	
Interpreter	25
IT strategy and planning professionals	150
<hr/>	
Kitchen and catering assistants	31,160
<hr/>	
Laboratory assistant	280
Labourer, building	14,130
Launderer, dry cleaner, presser	2,480
Lawyer / solicitor	40
Legal clerk	35
Legal secretary	20
Leisure and theme park attendants	2,095
Leisure and travel service occupations	605
Lifeguard	75
<hr/>	
Maid / room attendant (hotel)	18,010
Maintenance (electrical)	180
Maintenance (gas)	15
Maintenance (water / sewage)	25
Management accountant	35
Manager, bar	130
Manager, care home	25
Manager, catering	325
Manager, customer care	200
Manager, entertainment / arts / leisure	80
Manager, farm	40
Manager, financial	185
Manager, health and social services	55
Manager, hotel	180
Manager, Human Resources / training	145
Manager, IT	80
Manager, office	485
Manager, other hospitality	310
Manager, quality	130
Manager, restaurant	235
Manager, retail	370
Manager, safety and hygiene	40
Manager, utilities	15
Market and street traders and assistants	45
Mechanic	2,060

Accession Monitoring Report, May 2004 – December 2006

Mechanical engineer	650
Merchandisers and window dressers	105
Midwife	5
Musicians	50
<hr/>	
Nurse	270
Nursery nurse	380
Nursing auxiliaries and assistants	410
<hr/>	
Optician	45
<hr/>	
Packer	31,955
Painter and decorator	1,105
Personal assistant	655
Pharmacist / pharmacologist	375
Physiologist	10
Physiotherapist	50
Plasterer	260
Playgroup leader / assistant	215
Plumbers, heating and ventilating engineer	280
Policeman / policewoman	†
Power station staff	20
Prison Officer	†
Process operative (electronic equipment)	2,655
Process operative (other Factory worker)	133,845
Process operative (textiles)	1,965
Process operative (vehicle manufacturing)	815
Production manager	160
Programmer, computer	305
Property sales and lettings	100
Psychiatrist	40
Psychologist	10
Purchaser (retail trade)	175
<hr/>	
Receptionist (office)	970
Receptionist, hotel	1,525
Refuse and salvage occupation	785
Researcher (medical)	225
Researcher, higher education	310
Residential wardens and houseparents	150
Retailer	405
Road sweeper	410
Rofer, roof tiler and slater	110
<hr/>	
Sales and retail assistants	14,185
School secretary	25
Secretary	325
Secure delivery worker	45
Security guard	1,625
Senior manager	50
Sewage worker	15
Shelf stacker	340
Ship hand	55
Ship's captain	5
Site manager (construction)	130
Site manager (extraction industry)	10
Site supervisor (construction)	165
Site supervisor (extraction industry)	15
Skilled machine operator (construction)	940
Skilled machinery operator (extraction)	395

Skilled vehicle operator (construction)	100
Slaughterer, meat	305
Social worker	300
Software analyst	160
Sports and leisure assistants	625
Sports coach	15
Sports manager	†
Sportsperson (professional)	60
Steward / stewardess (ferry / shipping)	65
Supervisor (gas / water / electric)	10
Supervisor, door / bouncer	40
Supervisor, production	395
Supervisor, retail	240
Supplier, construction materials	40
Surgeon	60
Surveyor	115
Systems analyst	145
<hr/>	
Teacher, higher education	175
Teacher, primary and nursery education	105
Teacher, secondary education	100
Teacher, special needs education	70
Teacher's assistant	615
Technician, medical	155
Telecommunications administrator	80
Telecommunications engineer	135
Telecommunications manager	10
Telecommunications supervisor	10
Telephone salesperson	110
Telesales supervisor	15
Ticketeer and station attendants	110
Translator	80
Tutor (private)	35
Typist	70
<hr/>	
Veterinarian	110
<hr/>	
Waiter, waitress	19,965
Ward sister	10
Warden (care home)	45
Warehouse manager	215
Warehouse operative	39,155
Warehouse supervisor	400
Water works staff	25
Welder	3,175
Wholesaler	25
Window cleaner	105
Worker, gas	5
Worker, oil	15
<hr/>	
Not Stated	10,585
<hr/>	
Total	516,195

In previous Accession Monitoring Reports, published before September 2006, we have arranged the data in **Annex A** into sectors.

We are no longer doing so, as occupations such as process operative and cleaner appear in more than one sector and the data were inconsistent with other parts of the report. Please see Table 5 on page 14 of the report for a full breakdown of occupation groups (previously called sectors).