



**Home Office**

BUILDING A SAFE, JUST  
AND TOLERANT SOCIETY

**DWP** Department for  
Work and Pensions

 **Inland  
Revenue**

 **Office of the  
Deputy Prime Minister**  
Creating sustainable communities

# Accession Monitoring Report

May – December 2004

A joint online report by the Home Office, the Department for Work and Pensions,  
the Inland Revenue and the Office of the Deputy Prime Minister.

22 February 2005

© Crown Copyright 2005

This publication is not available in printed format

## **INTRODUCTION**

<b>BACKGROUND</b> .....	1
<b>KEY FINDINGS</b> .....	1
<b>NOTE ON THE PUBLICATION</b> .....	3
<b>NOTE ON THE WORKER REGISTRATION SCHEME DATA</b> .....	3
<b>TECHNICAL NOTE</b> .....	4

## **WORKER REGISTRATION SCHEME (WRS)**

### **APPLICANTS AND APPLICATIONS TO THE WRS**

1. Applicants.....	5
1.a. Applications.....	7

### **APPLICANT PROFILE**

2. Nationality of applicants .....	8
3. Date applicants last entered the UK .....	9

### **PROFILE OF REGISTERED WORKERS**

4. Age and Gender of registered workers.....	10
5. Dependants of registered workers .....	12
6. Sectors in which registered workers are employed .....	13
7. Occupations in which registered workers are employed .....	15
8. Registered workers' hours of work and wages .....	17
9. Proportion of registered workers in temporary/permanent employment.....	17
10. Geographical distribution of registered workers.....	18
11. Geographical distribution of registered workers by sector.....	20

### **NATIONAL INSURANCE NUMBERS**

12. National Insurance Numbers allocated and purpose of allocation.....	22
13. National Insurance Number applications by region .....	23

### **BENEFITS**

14. Applications for tax-funded, income-related benefits.....	24
15. Nationality of applicants for tax-funded, income-related benefits .....	25
16. Applications for tax-funded, income-related benefits by region .....	25
17. Applications for Child Benefit .....	26
18. Applications for Tax Credits .....	27

### **HOUSING AND HOMELESSNESS SUPPORT**

19. Local Authority Lettings.....	28
20. Homelessness assistance.....	28

<b>ANNEX A</b> .....	30
----------------------	----

## INTRODUCTION

### Background

On 1 May 2004, ten countries joined the European Union (EU). Those countries are: Cyprus; the Czech Republic; Estonia; Hungary; Latvia; Lithuania; Malta; Poland; Slovakia; and Slovenia. From that date, nationals of Malta and Cyprus have had full free movement rights and rights to work, throughout the European Union. Prior to enlargement existing EU member states had the right to regulate access to their labour markets by nationals of the other eight countries – the 'Accession 8' or 'A8'. The UK Government put in place transitional measures to regulate A8 nationals' access to the labour market (via the Worker Registration Scheme) and to restrict access to benefits.

### Key Findings

- Nationals from the Accession 8 countries continue to come to the UK to work, contributing to the success of the UK economy, whilst making very few demands of our welfare system or public services.
- In total there were 133 thousand applicants to the Worker Registration Scheme between 1 May and 31 December 2004, of whom up to nearly 40% were already in the UK before 1 May 2004. 24% were definitely in the UK before 1 May 2004, and a further 13 per cent of applicants did not state when they last entered. The figures show applications have fallen since their peak between May and July, with the number of applicants in December at around 9,000.
- Accession workers are continuing to go where the work is, helping to fill the gaps in our labour market, particularly in hospitality and catering, administration, business and management, agriculture, health and construction.
- In many cases Accession nationals are supporting the provision of public services in communities across the UK. Between July and December 2004, over 1,500 Accession country nationals registered as bus, lorry and coach drivers and more than 2,450 as care workers. There were over 300 teachers, researchers and classroom assistants; 95 dental practitioners (including hygienists and dental nurses); and over 130 GPs, hospital doctors, nurses and specialists.
- Just over a fifth of registered workers were based in London. However workers are based all over the UK the proportion applying to London fell from 28% in May to 19% in October and November. At the same time the proportion applying elsewhere has increased particularly the Midlands from 7% in May to 13% in December.

## Accession Monitoring Report, May – December 2004

- At least 96% of workers were working full time, and over 98% of applications for National Insurance numbers made by Accession country nationals between May and December were for employment purposes.
- The vast majority of workers are young and single, 83% of workers were aged between 18 and 34. 95% of registered workers had no dependants living with them in the UK, and only 2% had dependants under the age of 17 with them.
- The numbers applying for tax-funded income related benefits, child benefit, tax credits and housing support remains very low. For example, only 774 applications for Income Support and Jobseeker's Allowance were processed between May and December 2004, and of these applications only 21 were allowed to go forward for further consideration.

**Note on the publication**

This is the second of a series of quarterly reports based on provisional Management Information collected through the Worker Registration Scheme and manual monitoring of applications for National Insurance Numbers, claims for benefits, applications for tax credits and applications for housing and homelessness assistance. The first report covering the period between May and September was published in November 2004. Some of the figures published in the first report have been updated to include applications that were previously outstanding. Because the data covered in this report comprises only a part quarter (May-June) and 2 full quarters (July to September and October to December), in order to give an indication of trends monthly figures are provided for all data except that on housing & homelessness. In future, reports will contain quarterly rather than monthly figures.

**Note on the Worker Registration Scheme data**

Nationals of the A8 countries who wish to take up employment in the UK are generally required to register with the Worker Registration Scheme. The data from the WRS provided here is data on applicants to the scheme rather than applications (with the exception of section 1.a.). Applicants must register more than once if they are employed by more than one employer. They must also re-register if they change employer. Each application to the WRS therefore represents one job, not one applicant. To avoid counting applicants more than once, each applicant is represented only once in this report – with information relating to the first job for which they registered.

Data is provisional and an estimated 2,355 applications from the period May – December remain outstanding. In these cases final decisions had not been issued at the time of producing the management information for this report.

All WRS data in this report is sorted according to the date the applicant applied. The 'date applied' is the date the applicant puts on their application form. We would therefore expect there to be cases in which there is a delay between the date on which the forms are filled in or posted and the date on which the applications are received by the Home Office.

Data on applicants to the Worker Registration Scheme (WRS) is not a measurement of net migration to the UK (inflows minus outflows): rather, it gives gross [cumulative] figures for the number of workers applying to the WRS. The figures are not current: an individual who has registered to work and who leaves employment is not required to de-register, so some of those counted will have left the employment for which they registered and indeed some are likely to have left the UK.

**Technical Note**

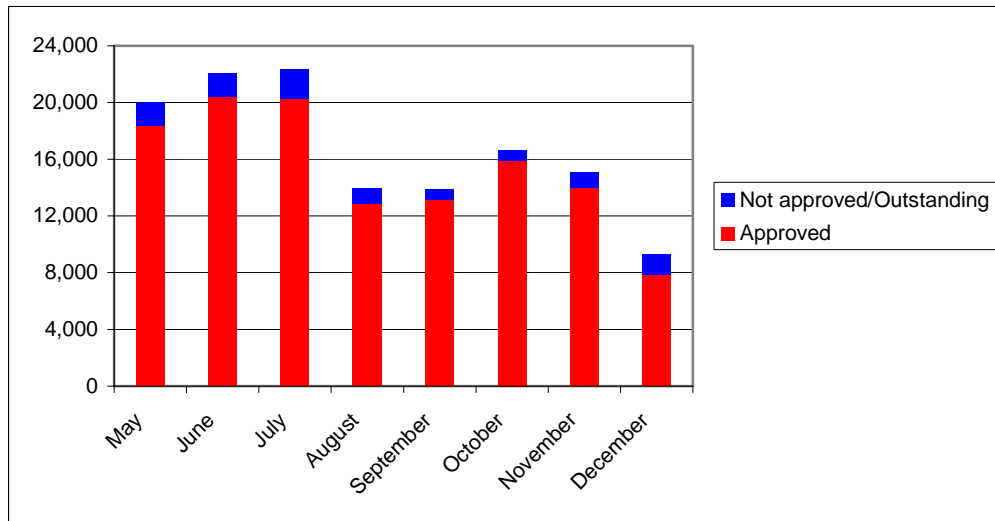
- All Worker Registration Scheme figures (other than percentages) are rounded to the nearest 5.  
† indicates 1 or 2.
- Because of rounding, totals may not sum.
- All percentages are calculated from non-rounded figures.

## WORKER REGISTRATION SCHEME (WRS)

### Applicants and Applications to the WRS

#### 1. Applicants

Chart 1: Applicants applied by month applied. May – December.



- In total there were 133 thousand applicants from 1 May to 31 December 2004, 123 thousand of whom were issued with Worker Registration certificates and cards.
- In the first 3 months applications peaked at over 20 thousand per month, this fell towards the end of the summer to around 14 thousand applications in August and September, before picking up slightly in October and November, and then falling again to 9 thousand applications in December.
- The low point in December may be a natural fall at Christmas, but it may be exaggerated by the fact that some December applications had yet to enter the system when this report was compiled, so may be lower than the real figure.

## Accession Monitoring Report, May – December 2004

Table 1: Applicants by month applied. May – December 2004.

	Approved	Refused <sup>1</sup>	Exempt <sup>2</sup>	Withdrawn <sup>3</sup>	<b>SUB-TOTAL</b>	Estimated Outstanding	<b>TOTAL</b>
May	18,380	360	110	1,215	<b>20,060</b>	15	<b>20,080</b>
June	20,405	190	165	1,325	<b>22,085</b>	20	<b>22,105</b>
July	20,240	205	190	1,680	<b>22,310</b>	20	<b>22,335</b>
August	12,890	115	40	880	<b>13,925</b>	35	<b>13,960</b>
September	13,110	110	40	515	<b>13,780</b>	75	<b>13,855</b>
October	15,880	100	50	370	<b>16,395</b>	220	<b>16,615</b>
November	13,985	70	25	330	<b>14,410</b>	675	<b>15,080</b>
December	7,880	45	15	85	<b>8,020</b>	1,295	<b>9,315</b>
<b>TOTAL</b>	<b>122,770</b>	<b>1,190</b>	<b>635</b>	<b>6,400</b>	<b>130,990</b>	<b>2,355</b>	<b>133,345</b>

This table shows applicants rather than the number of applications made. The figures are for initial applications only (not multiple applications, where an individual is doing more than one job simultaneously, nor re-registrations, where an individual has changed employers).

*Note: Please see Introduction: Technical Note on WRS data*

<sup>1</sup> 'Refused': Grounds for refusal include no evidence of employment, insufficient evidence of citizenship of one of the A8 countries.

<sup>2</sup> 'Exempt': Under the Accession (Immigration and Worker Registration) Regulations 2004, certain categories of A8 national are exempt from the requirement to register (e.g. those who have been employed legally in the UK for 12 months or more, without interruption).

<sup>3</sup> 'Withdrawn': The applicant withdrew their application.

**1.a. Applications**

- A total of 147 thousand applications were made between May to December, of which 138 thousand were approved (i.e. the worker's employment was registered).
- The total includes almost 10 thousand applications to re-register (from those who have previously registered but have changed employer), 2 thousand multiple registrations (from those working for more than one employer simultaneously), and almost 4 thousand multiple re-registrations (from those registering for subsequent, additional jobs, or those who have left their employer and are re-registering for more than one job). These applications account for the difference between the number of applicants and the number of applications.
- Over the reporting period, the number of re-registrations has risen from 260 in May to 2,000 a month in the final quarter. The number of multiple registrations has fallen from 700 in May to fewer than 100 in December.

Table 1.a.: Multiple applications and Re-registrations. May – December.

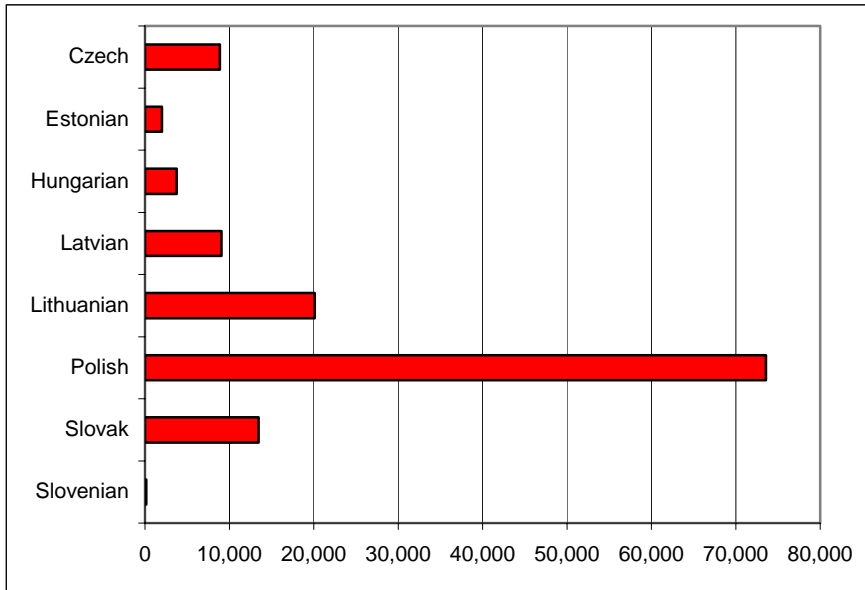
	Multiple	Re-registration	Multiple Re-registration	<b>TOTAL</b>
May	705	260	460	<b>1,425</b>
June	365	275	460	<b>1,100</b>
July	250	630	515	<b>1,390</b>
August	135	890	395	<b>1,420</b>
September	145	1,395	430	<b>1,965</b>
October	125	2,070	580	<b>2,775</b>
November	140	2,355	500	<b>3,000</b>
December	50	1,950	415	<b>2,420</b>
<b>TOTAL</b>	<b>1,920</b>	<b>9,825</b>	<b>3,755</b>	<b>15,500</b>

*Note: Please see Introduction: Technical Note on WRS data*

**Applicant Profile**

**2. Nationality of applicants**

Chart 2: Nationality of applicants: May – December.



- In the period 1 May to 31 December, the highest proportion of applicants were Polish (56% of the total), followed by Lithuanian (15%) and Slovak (10%) applicants. These proportions have remained roughly constant throughout the period.

Table 2: Nationality of applicants by month applied. May – December.

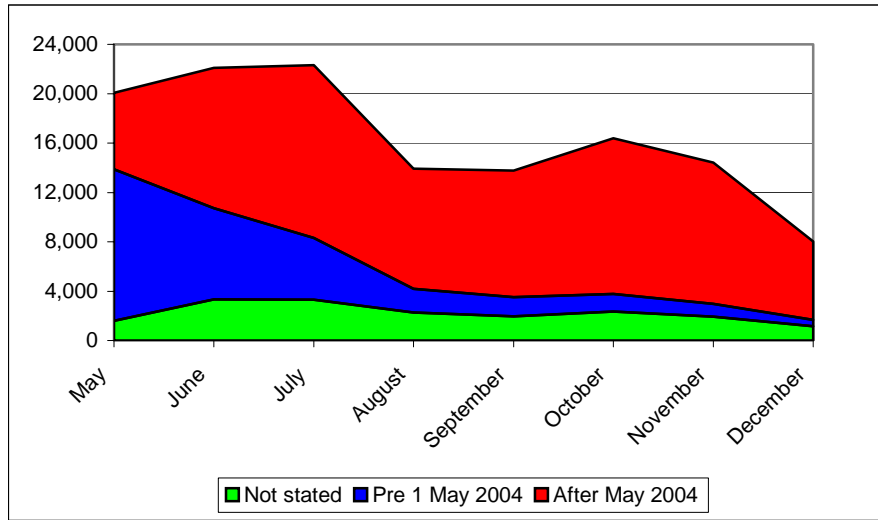
	May	June	July	August	September	October	November	December	TOTAL	As % of total
Czech	1,240	1,275	1,505	960	1,030	1,170	1,120	550	<b>8,850</b>	7
Estonian	290	370	365	175	225	220	245	105	<b>1,990</b>	2%
Hungarian	550	540	510	365	445	560	510	260	<b>3,740</b>	3%
Latvian	1,290	1,640	1,685	1,010	945	1,120	885	500	<b>9,070</b>	7%
Lithuanian	3,565	4,130	3,825	1,830	1,885	2,225	1,640	990	<b>20,095</b>	15%
Polish	11,585	11,865	12,240	8,030	7,680	9,165	8,395	4,580	<b>73,545</b>	56%
Slovak	1,510	2,215	2,140	1,530	1,545	1,905	1,590	1,020	<b>13,445</b>	10%
Slovenian	25	25	25	25	15	25	10	10	<b>165</b>	<0.5%
Other	10	25	25	5	10	5	10	10	<b>95</b>	<0.5%
<b>TOTAL</b>	<b>20,060</b>	<b>22,085</b>	<b>22,310</b>	<b>13,925</b>	<b>13,780</b>	<b>16,395</b>	<b>14,410</b>	<b>8,020</b>	<b>130,990</b>	100%

This table shows applicants rather than the number of applications made. The figures are for initial applications only (not multiple applications, where an individual is doing more than one job simultaneously, nor re-registrations, where an individual has changed employers).

*Note: Please see Introduction: Technical Note on WRS data*

### 3. Date applicants last entered the UK<sup>4</sup>

Chart 3: Date applicants last entered the UK, by month applied. May – December.



- Between May and December, 24% of applicants reported that they had entered the UK prior to 1 May 2004. 63% reported that they had entered on or after 1 May, and 14% did not state their arrival date.

Table 3: Date applicants entered UK, by month applied. May – December.

	May	June	July	August	September	October	November	December	TOTAL
Pre-2002	855	575	525	225	210	190	165	115	<b>2,855</b>
2002	1,015	635	455	210	160	160	120	50	<b>2,810</b>
2003	4,495	2,535	1,830	670	535	450	310	155	<b>10,975</b>
Jan – Apr 2004	5,915	3,630	2,170	820	650	625	440	195	<b>14,440</b>
Post 1 May 2004	6,180	11,370	14,010	9,720	10,260	12,625	11,440	6,350	<b>81,955</b>
Not stated	1,610	3,345	3,320	2,280	1,965	2,350	1,935	1,155	<b>17,955</b>
<b>TOTAL</b>	<b>20,060</b>	<b>22,085</b>	<b>22,310</b>	<b>13,925</b>	<b>13,780</b>	<b>16,395</b>	<b>14,410</b>	<b>8,020</b>	<b>130,990</b>

This table shows applicants rather than the number of applications made. The figures are for initial applications only (not multiple applications, where an individual is doing more than one job simultaneously, nor re-registrations, where an individual has changed employers).

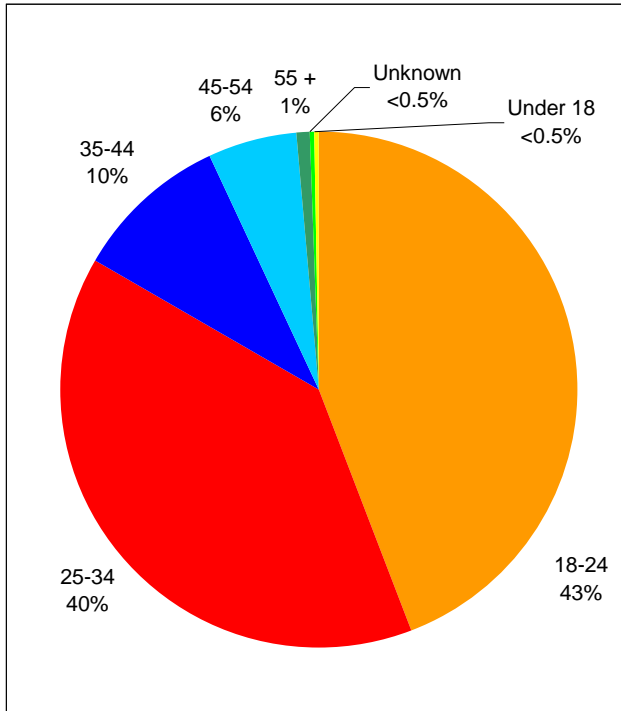
Note: Please see Introduction: Technical Note on WRS data

<sup>4</sup> This data is derived from applicants' responses to the question on the WRS application form: "When did you last enter the UK?" The Home Office does not verify these responses.

**Profile of Registered Workers**

**4. Age and Gender of registered workers**

Chart 4: Age of registered workers. May – December.



- Of those who applied between May and December, 83% of registered workers were aged 18 – 34. This percentage has been fairly consistent across the period, although there were more people in the younger 18-24 bracket during the summer months of June to August.

Table 4: Age of registered workers. May – December.

	May	June	July	August	September	October	November	December	TOTAL	As % of total
Under 18	35	65	85	25	30	25	25	25	<b>315</b>	<0.5%
18-24	6,825	9,320	10,260	6,190	5,430	6,480	5,575	3,125	<b>53,205</b>	43%
25-34	8,325	7,820	6,935	4,665	5,360	6,455	5,810	3,265	<b>48,635</b>	40%
35-44	1,825	1,905	1,800	1,225	1,330	1,745	1,525	840	<b>12,195</b>	10%
45-54	1,135	1,110	1,010	670	815	980	890	555	<b>7,160</b>	6%
55-64	185	150	125	95	105	130	135	65	<b>990</b>	1%
65+	5	†	5	0	†	5	5	0	<b>25</b>	<0.5%
Unknown	45	30	20	25	35	65	25	15	<b>255</b>	<0.5%
<b>TOTAL</b>	<b>18,380</b>	<b>20,405</b>	<b>20,240</b>	<b>12,890</b>	<b>13,110</b>	<b>15,880</b>	<b>13,985</b>	<b>7,880</b>	<b>122,770</b>	100%

This table shows registered workers rather than the number of applications made. The figures are for initial applications only (not multiple applications, where an individual is doing more than one job simultaneously, nor re-registrations, where an individual has changed employers).

*Note: Please see Introduction: Technical Note on WRS data*

## Accession Monitoring Report, May – December 2004

- The proportion of male and female registered workers has been almost equal throughout the reporting period. The Male:Female ratio for those who applied in May – December was 55:45.

## 5. Dependants of registered workers<sup>5</sup>

- A very small minority (5%) of registered workers who applied in May – December had dependants living with them in the UK. Amongst those who did have dependants, the average number of dependants was 1.3.
- The number of dependants as a proportion of the number of registered workers has remained roughly consistent throughout the period.

Table 5: Registered workers' dependants. Total, May – December.

	Total registered workers	Registered workers with dependants	Number of dependants		
			Under 17	17 and over	Total
May	18,380	1,060	690	640	<b>1,330</b>
June	20,405	830	640	475	<b>1,115</b>
July	20,240	855	585	510	<b>1,095</b>
August	12,890	585	410	365	<b>775</b>
September	13,110	695	460	430	<b>890</b>
October	15,880	905	525	590	<b>1,115</b>
November	13,985	900	600	540	<b>1,140</b>
December	7,880	580	380	365	<b>745</b>
<b>TOTAL</b>	<b>122,770</b>	<b>6,410</b>	<b>4,290</b>	<b>3,920</b>	<b>8,210</b>

This table shows registered workers rather than the number of applications made. The figures are for initial applications only (not multiple applications, where an individual is doing more than one job simultaneously, nor re-registrations, where an individual has changed employers).

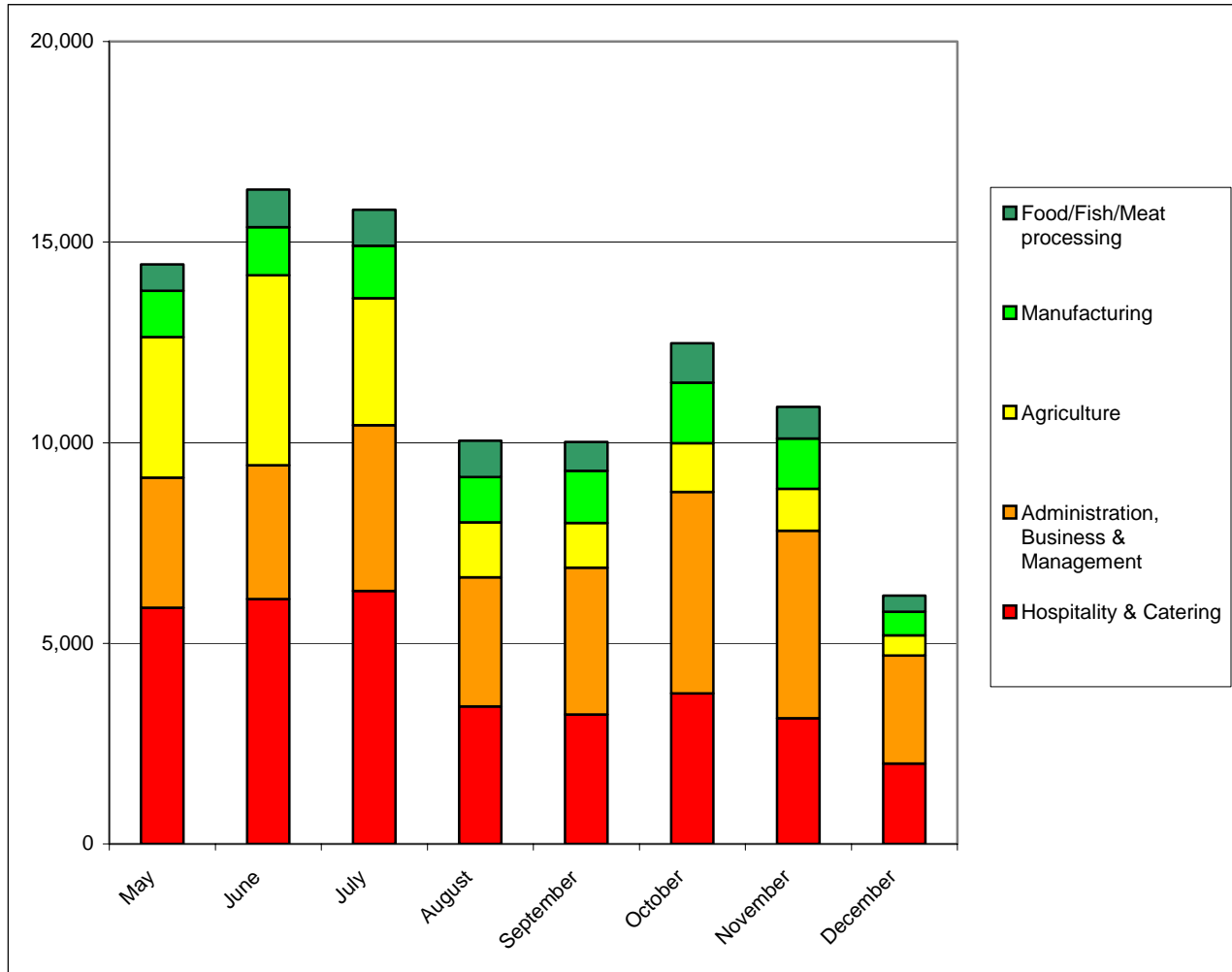
*Note: it is likely that there is some 'double counting' of dependants, in the sense that some of those recorded as dependants (particularly older children and spouses) may also have registered in their own right to work in the UK.*

*Note: Please see Introduction: Technical Note on WRS data*

<sup>5</sup> This data is derived from applicants' responses to the question on the WRS application form: "If your dependants (children and/or spouse or partner) are living with you in the UK, how many of them are: Aged 16 or under?" and "Aged 17 or above?" The Home Office does not verify these responses.

**6. Sectors in which registered workers are employed**

Chart 5: Top 5 sectors in which registered workers are employed, by month applied. May – December.



- The top five sectors, for registered workers who applied in May – December, were Hospitality & Catering (28%), Administration, Business & Management (24%), Agriculture (14%), Manufacturing (8%) and Food, Fish and Meat Processing (5%).
- The biggest fluctuation (over the reporting period) in the number of workers registering in a particular sector was in Agriculture. The proportion of workers who were employed in Agriculture peaked in June at 23% and then dropped gradually to 6% in December. There was also quite a change in the Administration, Business and Management sector composing only 16% of workers in June, rising to 34% in December.

## Accession Monitoring Report, May – December 2004

**Table 6: Sectors in which registered workers are employed, by month applied. May – December.**

	May	June	July	August	September	October	November	December	<b>TOTAL</b>
Hospitality & Catering	5,880	6,105	6,305	3,425	3,230	3,755	3,130	2,000	<b>33,830</b>
Administration, Business & Management	3,240	3,335	4,135	3,220	3,655	5,020	4,670	2,680	<b>29,955</b>
Agriculture	3,505	4,735	3,160	1,375	1,115	1,215	1,045	500	<b>16,650</b>
Manufacturing	1,155	1,200	1,310	1,125	1,305	1,505	1,255	585	<b>9,440</b>
Food/Fish/Meat processing	650	935	905	905	720	985	785	400	<b>6,285</b>
Health & Medical	570	600	810	650	750	765	745	475	<b>5,365</b>
Retail	795	745	845	535	570	700	675	395	<b>5,255</b>
Construction & Land	840	870	860	555	570	635	555	185	<b>5,070</b>
Transport	305	295	265	295	350	460	435	240	<b>2,650</b>
Entertainment & Leisure	315	475	465	245	240	190	135	100	<b>2,165</b>
Education & Cultural	240	215	215	105	220	230	175	70	<b>1,475</b>
Real Estate & Property	80	75	80	50	75	60	70	30	<b>520</b>
Financial Services	75	65	65	45	50	45	55	30	<b>420</b>
Computer Services	85	45	45	35	40	70	40	15	<b>380</b>
Extraction Industries	35	40	70	40	35	75	50	10	<b>350</b>
Security and Protection	45	55	55	35	30	30	25	70	<b>340</b>
Telecommunications	30	30	25	15	20	30	15	15	<b>175</b>
Sporting activities	20	25	20	15	20	15	20	10	<b>145</b>
Utilities (Gas, Electricity, Water)	20	15	20	15	15	20	10	5	<b>120</b>
Law-related Services	25	10	10	10	5	10	10	5	<b>85</b>
Government	15	10	5	15	5	10	10	5	<b>80</b>
Unknown	460	530	570	190	90	60	75	45	<b>2,020</b>
<b>TOTAL</b>	<b>18,380</b>	<b>20,405</b>	<b>20,240</b>	<b>12,890</b>	<b>13,110</b>	<b>15,880</b>	<b>13,990</b>	<b>7,880</b>	<b>122,770</b>

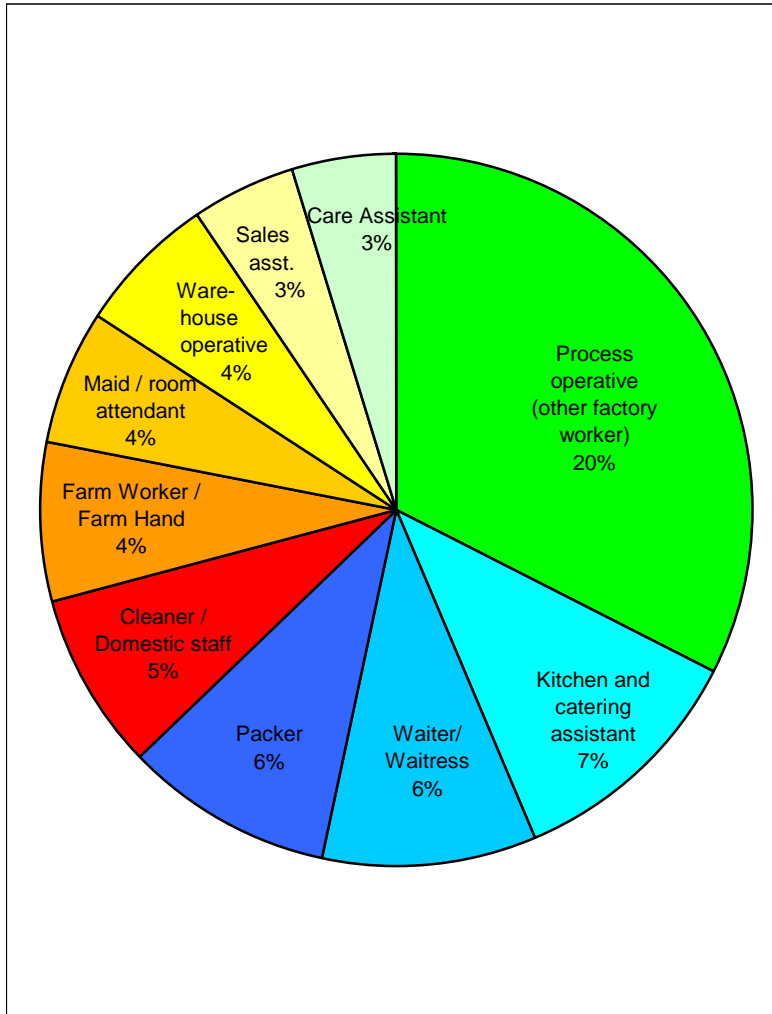
This table shows registered workers rather than the number of applications made. The figures are for initial applications only (not multiple applications, where an individual is doing more than one job simultaneously, nor re-registrations, where an individual has changed employers).

*Note: Please see Introduction: Technical Note on WRS data*

## 7. Occupations in which registered workers are employed

Chart 6: Top 10 occupations in which registered workers are employed. July – December.

(May/June data not available)



*Note: Percentages indicate percentage of all workers registered, July to December.*

- The top 20 occupations have remained largely consistent over the period.
- As with the sector data, the biggest fluctuation (over the reporting period) in the number of workers registering in particular occupations was in agricultural occupations. For example 6% of workers in July were Farm workers/Farm hands compared to just 2% in December.
- Please refer to **Annex A** for a full table of occupations of registered workers who applied in July – December.

Accession Monitoring Report, May – December 2004

Table 7: Top 20 occupations in which registered workers are employed, by month applied. July – December (May/June data not available)

	July	August	September	October	November	December	TOTAL
Process operative (other factory worker)	2,770	2,480	2,825	3,700	3,360	1,780	<b>16,915</b>
Kitchen and catering assistant	1,490	925	820	1,050	920	585	<b>5,785</b>
Packer	1,050	720	810	990	1,005	635	<b>5,210</b>
Waiter/Waitress	1,430	770	705	860	655	475	<b>4,890</b>
Cleaner / Domestic staff	975	655	695	800	675	405	<b>4,215</b>
Warehouse operative	530	465	495	890	815	465	<b>3,665</b>
Maid / room attendant (hotel)	860	450	555	630	505	295	<b>3,300</b>
Farm Worker / Farm Hand	1,165	630	420	505	380	185	<b>3,280</b>
Sales / retail assistant	620	325	375	465	425	270	<b>2,485</b>
Care assistant / Home Carer	405	345	455	460	475	315	<b>2,455</b>
Labourer, building	510	330	320	405	290	140	<b>2,000</b>
Bar staff	585	290	275	325	285	165	<b>1,925</b>
Food processing operative (fruit/veg)	300	210	285	315	270	150	<b>1,535</b>
Food processing operative (meat)	245	310	245	305	260	105	<b>1,470</b>
Chef (other) <sup>6</sup>	390	180	230	195	200	150	<b>1,345</b>
Crop Harvester	615	170	170	165	65	30	<b>1,215</b>
Administrator, general	205	155	175	185	170	85	<b>975</b>
Hotel porter	160	100	120	160	100	60	<b>705</b>
Driver, HGV (Heavy Goods Vehicle)	60	110	125	140	175	85	<b>695</b>
Driver, delivery van	85	80	100	110	125	60	<b>555</b>
<b>TOTAL (20)</b>	<b>14,450</b>	<b>9,710</b>	<b>10,210</b>	<b>12,645</b>	<b>11,160</b>	<b>6,445</b>	<b>64,615</b>
TOTAL (other)	5,790	3,175	2,900	3,235	2,830	1,435	<b>19,370</b>
<b>GRAND TOTAL (all)</b>	<b>20,240</b>	<b>12,890</b>	<b>13,110</b>	<b>15,880</b>	<b>13,985</b>	<b>7,880</b>	<b>83,985</b>

This table shows registered workers rather than the number of applications made. The figures are for initial applications only (not multiple applications, where an individual is doing more than one job simultaneously, nor re-registrations, where an individual has changed employers).

*Note: Please see Introduction: Technical Note on WRS data*

<sup>6</sup> i.e. not Head Chef or Second Chef. See Annex A for a full table of occupations in which registered workers were employed.

**8. Registered workers' hours of work<sup>7</sup> and wages<sup>8</sup>**

- 96% of registered workers who applied in May – December were working full time (more than 16 hours a week)<sup>9</sup>.
- The vast majority (80%) of registered workers who applied in May – December were earning £4.50 - £5.99 per hour.

**9. Proportion of registered workers in temporary/permanent employment<sup>10</sup>**

- For those who applied in the period from May to December 2004, 45% of registered workers were in temporary employment and 52% were in permanent employment (3% did not provide this information).
- The proportion of registered workers employed on a temporary or permanent basis varied considerably from sector to sector. In Agriculture, 63% were in temporary employment and 34% in permanent employment. In Administration, Business and Management, 82% were in temporary employment and 15% in permanent employment. In Hospitality and Catering the pattern was reversed, with only 20% in temporary employment and 77% in permanent employment.

---

<sup>7</sup> This data is derived from applicants' responses to the question on the WRS application form: "How many hours per week do you normally work?" The Home Office does not verify these responses.

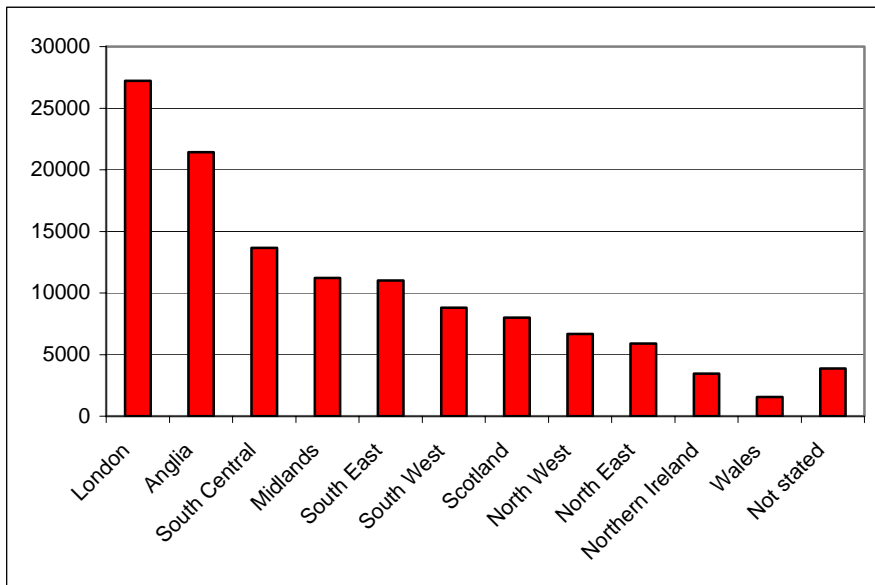
<sup>8</sup> This data is derived from applicants' responses to the question on the WRS application form: "How much is your hourly rate, before deductions?" The Home Office does not verify these responses.

<sup>9</sup> The 96% is likely to be an underestimate. The proportion of registered workers working part time is likely to be lower than 4%, because some were doing more than one part time job, simultaneously. The data published here only takes account of one of those jobs – so the total hours an individual was working will in some cases be more than 16.

<sup>10</sup> This data is derived from applicants' responses to the question on the WRS application form: "What type of employment are you undertaking? (Please indicate by ticking the appropriate box)." The Home Office does not verify these responses.

**10. Geographical distribution of registered workers<sup>11</sup>**

Chart 7: Geographical distribution of registered workers. May – December.



- London has had the greatest number of workers registering during the May – December period with 22% of the total. This is followed by the Anglia and South Central Regions with 17% and 11% of the total respectively.
- Northern Ireland and Wales had the fewest registrations with 3% and 1% of the total respectively.
- The proportion applying to London however fell from 28% in May to 19% in October and November. At the same time the proportion applying elsewhere has increased particularly the Midlands from 7% in May to 13% in December.

<sup>11</sup> Regions are based on the applicant's employer's postcode, where supplied. Regions are defined according to the Post Office's Postal Address Book regions.

Table 8: Geographical distribution of registered workers. May – December.

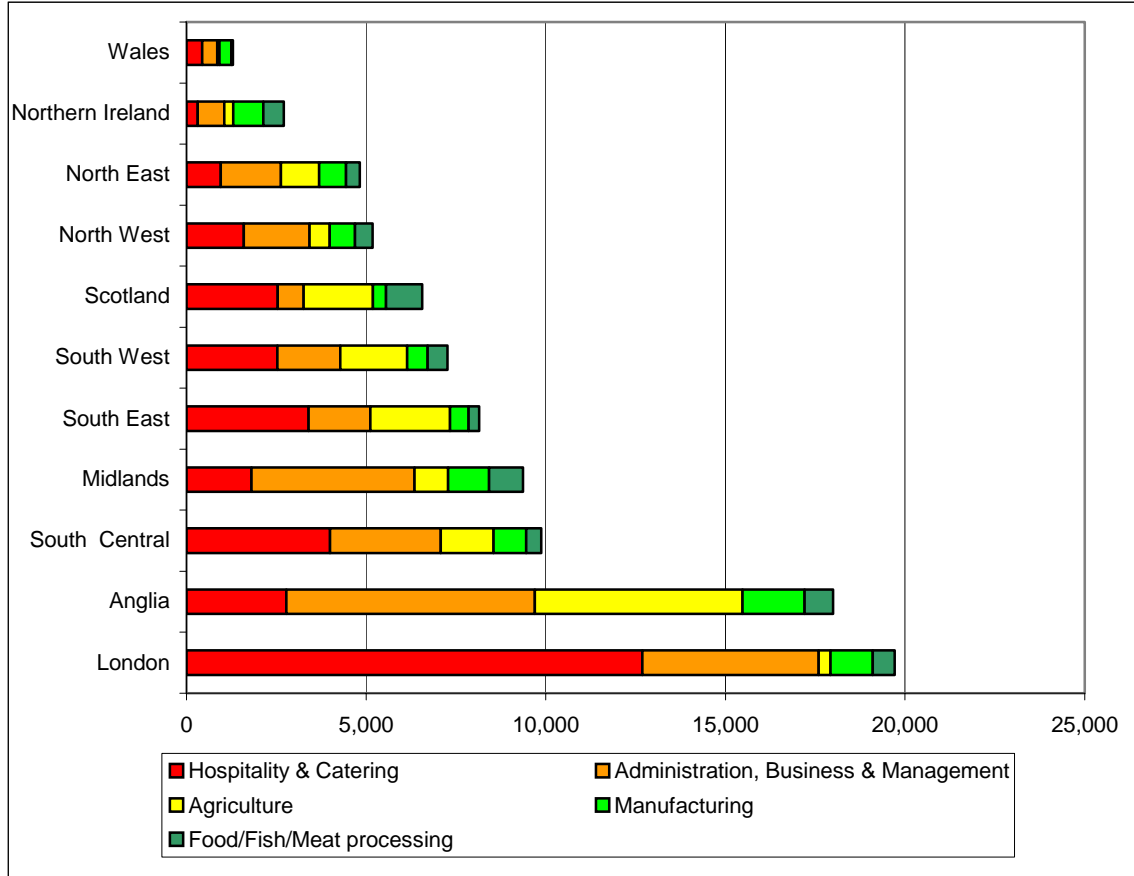
	May	June	July	August	September	October	November	December	TOTAL
London	5,165	4,805	4,545	2,585	2,730	3,065	2,640	1,680	<b>27,215</b>
Anglia	4,100	3,850	3,760	1,985	2,080	2,385	2,110	1,155	<b>21,425</b>
South Central	2,515	2,320	2,230	1,285	1,255	1,685	1,505	860	<b>13,660</b>
Midlands	1,335	1,590	1,770	1,260	1,165	1,535	1,535	1,015	<b>11,210</b>
South East	1,710	2,215	2,000	1,170	1,165	1,195	1,005	560	<b>11,020</b>
South West	1,040	1,440	1,535	1,010	995	1,225	1,055	515	<b>8,815</b>
Scotland	785	1,465	1,390	845	1,010	1,215	810	465	<b>7,995</b>
North West	490	900	1,135	840	845	1,040	970	465	<b>6,680</b>
North East	425	745	685	915	705	1,010	985	410	<b>5,880</b>
Northern Ireland	320	425	390	425	505	670	460	255	<b>3,455</b>
Wales	210	235	215	175	200	220	180	115	<b>1,550</b>
Not stated	285	415	580	390	455	635	735	380	<b>3,875</b>
<b>TOTAL</b>	<b>18,385</b>	<b>20,405</b>	<b>20,240</b>	<b>12,890</b>	<b>13,110</b>	<b>15,880</b>	<b>13,990</b>	<b>7,880</b>	<b>122,770</b>

This table shows registered workers rather than the number of applications made. The figures are for initial applications only (not multiple applications, where an individual is doing more than one job simultaneously, nor re-registrations, where an individual has changed employers).

*Note: Please see Introduction: Technical Note on WRS data*

**11. Geographical distribution of registered workers by sector<sup>12</sup>**

**Chart 8: Top 5 sectors – geographical distribution of registered workers. Cumulative total, May – December.**



**Trends within sectors**

- 37% of those working in Hospitality and Catering were in London – far more than in any other region. The next highest proportions were working in South Central England and the South East (12% and 10% respectively).
- 35% of those working in Agriculture were in Anglia, followed by the South East (13%), whereas only 2% of Agriculture workers were in London.
- 23% of those working in Administration, Business and Management were in Anglia, 16% were in London and 15% were in the Midlands.

<sup>12</sup> Regions are based on the applicant's employer's postcode, where supplied. Regions are defined according to the Post Office's Postal Address Book regions.

**Trends within regions**

- 47% of those located in London were working in Hospitality and catering, and 32% of those working in Scotland, but only 13% in Anglia and 9% in Northern Ireland.
- 40% of those located in the Midlands were working in Administration, Business and Management, as were 32% of those in Anglia, but only 16% in the South East and 9% in Scotland.
- Other significant trends include 27% of those in Anglia working in Agriculture, and 24% of those in Northern Ireland working in Manufacturing.

Table 9: Top 10 sectors – geographical distribution of registered workers. Cumulative total, May – December.

	London	Anglia	South Central	Midlands	South East	South West	Scotland	North West	North East	Northern Ireland	Wales	Unknown*	TOTAL
Hospitality & Catering	12,685	2,775	4,000	1,810	3,405	2,525	2,540	1,590	950	315	435	810	<b>33,840</b>
Administration, Business & Management	4,910	6,920	3,080	4,540	1,720	1,760	725	1,840	1,675	730	420	1,645	<b>29,970</b>
Agriculture	325	5,775	1,465	930	2,215	1,855	1,925	560	1,065	255	60	220	<b>16,650</b>
Manufacturing	1,180	1,730	910	1,140	515	570	370	700	750	835	330	420	<b>9,445</b>
Food/Fish/Meat processing	610	790	420	945	290	555	1,010	495	385	575	50	165	<b>6,290</b>
Construction & Land	1,175	630	845	305	505	215	405	285	225	345	35	100	<b>5,070</b>
Retail	2,050	690	635	395	525	195	155	210	130	90	35	140	<b>5,255</b>
Health & Medical	1,110	605	865	275	810	445	460	185	310	90	75	145	<b>5,370</b>
Entertainment & Leisure	615	230	290	105	195	220	70	275	75	15	35	35	<b>2,165</b>
Transport	430	420	280	325	265	210	100	310	135	120	10	50	<b>2,650</b>
<b>TOTAL (10)</b>	<b>25,095</b>	<b>20,565</b>	<b>12,790</b>	<b>10,775</b>	<b>10,445</b>	<b>8,545</b>	<b>7,755</b>	<b>6,455</b>	<b>5,700</b>	<b>3,365</b>	<b>1,485</b>	<b>3,730</b>	<b>116,705</b>
TOTAL (other / unknown)	2,120	860	870	435	575	270	240	225	180	90	65	145	<b>6,065</b>
<b>GRAND TOTAL</b>	<b>27,215</b>	<b>21,425</b>	<b>13,660</b>	<b>11,210</b>	<b>11,020</b>	<b>8,815</b>	<b>7,995</b>	<b>6,680</b>	<b>5,880</b>	<b>3,455</b>	<b>1,550</b>	<b>3,875</b>	<b>122,770</b>

This table shows registered workers rather than the number of applications made. The figures are for initial applications only (not multiple applications, where an individual is doing more than one job simultaneously, nor re-registrations, where an individual has changed employers).

\*Postcode not supplied

Note: Regions are defined according to the Post Office's Postal Address Book regions. Data is based on employer's postcode, where supplied.

Note: Please see Introduction: Technical Note on WRS data

**National Insurance Numbers**

**12. National Insurance Numbers allocated and purpose of allocation**

- Between May and December 2004, the total number of applications that were processed for National Insurance Numbers increased each month until September, when they tailed off. Numbers then continued to rise again.
- Some 98% of National Insurance Numbers were allocated for employment purposes, 0.9% for benefit purposes and 0.5% for tax credit purposes.
- Between May and December, applications were fairly evenly spread between genders: 53% of applicants were male and 47% were female. The majority (84%) of applicants were between 18 and 34 years old.

Table 10: National Insurance Numbers allocated and refused. May – December.

	Total allocated	Allocated for employment purposes	Allocated for benefit purposes	Allocated for tax credit purposes	Total refused
May	2,820	2,776	23	21	66
June	5,126	5,030	60	36	154
July	6,096	5,984	61	51	231
August	9,160	9,042	79	39	265
September	7,627	7,506	72	49	190
October	8,551	8,421	88	42	215
November	13,585	13,415	119	51	278
December	10,514	10,365	86	63	212
<b>TOTAL</b>	<b>63,479</b>	<b>62,539</b>	<b>588</b>	<b>352</b>	<b>1,611</b>

**13. National Insurance Numbers applications allocated and refused by region**

**Table 11: National Insurance Numbers applications allocated and refused by region. May – December.**

	May*	June*	July*	August*	Sept*	Oct*	Nov*	Dec*	TOTAL
London	1,491	2,242	2,405	2,666	2,655	2,832	3,580	2,945	<b>20,816</b>
South East	590	776	665	1,639	1,128	1,202	2,728	1,917	<b>10,645</b>
East of England	187	491	499	962	879	880	1,962	1,315	<b>7,175</b>
East Midlands	78	276	592	667	633	863	929	753	<b>4,791</b>
South West	71	297	381	546	433	581	1,079	812	<b>4,200</b>
North West	100	345	436	508	516	383	1,093	722	<b>4,103</b>
West Midlands	31	204	432	828	281	441	1,020	790	<b>4,027</b>
Scotland	147	294	413	735	584	720	327	481	<b>3,701</b>
Yorkshire and Humber	40	134	237	395	240	395	613	413	<b>2,467</b>
Wales	44	97	105	308	286	218	247	300	<b>1,605</b>
North East	26	49	57	73	89	70	120	85	<b>569</b>
Fast-track claims**	81	75	105	98	93	181	165	193	<b>991</b>
<b>TOTAL</b>	<b>2,886</b>	<b>5,280</b>	<b>6,327</b>	<b>9,425</b>	<b>7,817</b>	<b>8,766</b>	<b>13,863</b>	<b>10,726</b>	<b>65,090</b>

Note: \* Reporting periods are: 1 May-2 June, 3-30 June, 1-28 July, 29 July-1 September, 2-29 September, 30 September-27 October, 28 October-1 December and 2-29 December 2004.

\*\*Fast-track applications relate to highly skilled / specialist employment only. Specific regions are unknown.

**Benefits**

**14. Decisions on applications for tax-funded, income-related benefits**

- Table 12 below shows applications for income-based Jobseeker's Allowance, Income Support and State Pension Credit.
- Between May and December, there were 215 applications for Income Support, 559 applications for income-based Jobseeker's Allowance and four applications for State Pension Credit.
- Only 2.7% of these applications have been allowed to proceed for further consideration of whether the claimants meet the other conditions of entitlement. The vast majority (97.3%) were disallowed on the basis of the Right to Reside and Habitual Residence Tests.
- These figures are provisional, as 48 appeals (6.2% of disallowed decisions) had been received by the end of December. Of the re-consideration decisions made so far (18), only two were allowed.
- More applications were received in May, June and December than in the other months.

Table 12: Decisions on applications for tax-funded, income-related benefits. May – December

	May	June	July	Aug	Sept	Oct	Nov	Dec	Total
<b>Applications for Income Support</b>									
Disallowed*	17	26	18	26	19	26	21	58	211
Allowed to proceed for further processing	0	0	1	1	0	0	1	1	4
<b>Total</b>	<b>17</b>	<b>26</b>	<b>19</b>	<b>27</b>	<b>19</b>	<b>26</b>	<b>22</b>	<b>59</b>	<b>215</b>
<b>Applications for income-based Jobseeker's Allowance</b>									
Disallowed*	85	106	46	51	68	65	43	78	542
Allowed to proceed for further processing	2	4	2	2	4	1	1	1	17
<b>Total</b>	<b>87</b>	<b>110</b>	<b>48</b>	<b>53</b>	<b>72</b>	<b>66</b>	<b>44</b>	<b>79</b>	<b>559</b>
<b>Applications for State Pension Credit</b>									
Disallowed*	0	0	0	0	1	1	0	2	4
Allowed to proceed for further processing	0	0	0	0	0	0	0	0	0
<b>Total</b>	<b>0</b>	<b>0</b>	<b>0</b>	<b>0</b>	<b>1</b>	<b>1</b>	<b>0</b>	<b>2</b>	<b>4</b>
<b>Total disallowed*</b>	<b>102</b>	<b>132</b>	<b>64</b>	<b>77</b>	<b>88</b>	<b>92</b>	<b>64</b>	<b>138</b>	<b>757</b>
<b>Total allowed to proceed for further processing</b>	<b>2</b>	<b>4</b>	<b>3</b>	<b>3</b>	<b>4</b>	<b>1</b>	<b>2</b>	<b>2</b>	<b>21</b>
<b>Total</b>	<b>104</b>	<b>136</b>	<b>67</b>	<b>80</b>	<b>92</b>	<b>93</b>	<b>66</b>	<b>140</b>	<b>778</b>

\*on the Right to Reside and Habitual Residence tests

**15. Nationality of applicants for tax-funded, income-related benefits**

- In the period May – December, most applications were from Poland (33.7%) and Czech Republic Nationals (31.9%).

Table 13: Decisions on applications for tax-funded, income-related benefits by nationality. May – December

	May	June	July	Aug	Sept	Oct	Nov	Dec	TOTAL
Czech Rep	48	64	16	27	29	23	15	26	<b>248</b>
Estonia	3	5	3	2	2	3	1	4	<b>23</b>
Hungary	0	1	0	2	1	6	6	8	<b>24</b>
Latvia	3	7	4	10	5	4	0	13	<b>46</b>
Lithuania	10	13	8	7	13	13	6	17	<b>87</b>
Poland	31	36	31	23	30	32	27	52	<b>262</b>
Slovakia	9	9	3	8	11	12	10	20	<b>82</b>
Slovenia	0	1	2	1	1	0	1	0	<b>6</b>
<b>TOTAL</b>	<b>104</b>	<b>136</b>	<b>67</b>	<b>80</b>	<b>92</b>	<b>93</b>	<b>66</b>	<b>140</b>	<b>778</b>

**16. Decisions on tax-funded, income-related benefits by region**

Table 14: Decisions on applications for tax-funded, income-related benefits by region. May – December

	May	June	July	Aug	Sept	Oct	Nov	Dec	TOTAL
London	23	34	20	28	34	27	24	48	<b>238</b>
North West	19	26	9	11	15	8	11	26	<b>125</b>
South East	30	13	8	3	8	7	5	11	<b>85</b>
Yorks and Humber	5	16	9	9	9	13	4	8	<b>73</b>
North East	6	13	3	2	8	11	2	4	<b>49</b>
West Midlands	6	8	0	4	2	8	6	13	<b>47</b>
East of England	1	9	5	9	2	5	3	11	<b>45</b>
Scotland	2	6	5	6	4	6	6	3	<b>38</b>
East Midlands	5	0	3	4	5	3	3	10	<b>33</b>
Wales	2	5	3	0	2	5	1	5	<b>23</b>
South West	5	6	2	4	3	0	1	1	<b>22</b>
<b>TOTAL</b>	<b>104</b>	<b>136</b>	<b>67</b>	<b>80</b>	<b>92</b>	<b>93</b>	<b>66</b>	<b>140</b>	<b>778</b>

**17. Applications for Child Benefit**

- The number of applications received varied little between May and December. During this period 41% of applications were approved and 18% were rejected.
- There are cases where an application may be processed in a different month to that in which it was received. This is because once a Child Benefit application is made by an A8 national, the Child Benefit Office makes further enquiries about the applicant’s date of arrival in the UK and employment status, in order to ascertain whether or not the applicant passes the right to reside test.
- Of the 1419 Child Benefit applications received where enquiry forms have been returned this quarter, 986 were from customers who arrived in the UK before 1 May 2004.

Table 15: Applications for Child benefit (Great Britain and Northern Ireland<sup>13</sup>). May – December

	Applications Received	Applications Approved	Applications Rejected	Applications Terminated
May	601	57	15	0
June	560	133	15	0
July	565	275	192	0
August	459	263	123	1
September	604	290	126	0
October	719	375	158	3
November	867	401	184	3
December	714	292	94	0
<b>TOTAL</b>	<b>5089</b>	<b>2086</b>	<b>907</b>	<b>7</b>

<sup>13</sup> Child Benefit is administered separately in Great Britain and in Northern Ireland.

**18. Applications for Tax Credits**

- Between May and December 27% of applications for tax credits were approved and 20% were rejected.

Table 16: Applications for Tax Credits. May – December

	Applications Received	Applications Approved	Applications Rejected	Applications Terminated
May	0	0	0	0
June	80	0	0	0
July	59	6	13	0
August	83	9	32	0
September	92	36	27	0
October	131	24	36	0
November	200	92	41	0
December	295	85	36	0
<b>TOTAL</b>	<b>940</b>	<b>252</b>	<b>185</b>	<b>0</b>

**Housing and Homelessness support**

**19. Local Authority Lettings**

- The May to December total of 33 lettings to A8 nationals represents just 0.02% of the average number of lettings to all new tenants over a typical 8 month period.

Table 17: Local Authority lettings, by reason. England.

	Currently legally employed	Self-employed	Retired from employment/self-employment in UK	Provider or recipient of services	Other	<b>TOTAL</b>	Percentage that arrived in the UK before 1 May 2004
2004 Q1*	0	0	0	0	2	<b>2</b>	100%
Q2	11	0	0	0	1	<b>12</b>	83%
Q3	18	0	0	0	1	<b>19</b>	53%
<b>TOTAL</b>	29	0	0	0	4	<b>33</b>	67%

\* Please note – Q1 is May and June. All figures are provisional.

**20. Homelessness assistance**

- The May to December total of 455 decisions on A8 applications for homelessness assistance represents just 0.2% of the average number of homelessness decisions over a typical 8 month period.

Table 18: Decisions on applications for assistance<sup>1415</sup>. England.

	Main duty owed to Applicant	Applicant not owed a main duty	<b>TOTAL</b>
2004 Q1*	42	122	<b>164</b>
Q2	66	102	<b>168</b>
Q3	70	53	<b>123</b>
<b>TOTAL</b>	178	277	<b>455</b>

\* Please note – Q1 is May and June. All Figures are provisional.

<sup>14</sup> Under the homelessness provisions of the 1985 and 1996 Housing Acts.

<sup>15</sup> 'Main duty owed' means that the local authority is required to secure suitable accommodation for applicant and their household.

## Accession Monitoring Report, May – December 2004

- The May to December total of 178 A8 acceptances represents just 0.2% of the average number of acceptances of homelessness applications over a typical 8 month period.

**Table 19: Homeless households owed a main duty<sup>16</sup> by reason for eligibility. England.**

	Currently legally employed	Self-employed	Retired from employment/self-employment in UK	Provider or recipient of services	Other	<b>TOTAL</b>	Percentage that arrived in the UK before 1 May 2004	Percentage of total that were being accommodated at the time main duty accepted
2004 Q1*	19	0	0	3	20	<b>42</b>	90%	67%
Q2	41	0	0	1	24	<b>66</b>	89%	70%
Q3	63	3	0	1	3	<b>70</b>	71%	62%
<b>TOTAL</b>	123	3	0	5	47	<b>178</b>	83%	66%

\* Please note – Q1 is May and June. All figures are provisional.

<sup>16</sup> 'Main duty owed' means that the local authority is required to secure suitable accommodation for applicant and their household.

**ANNEX A**

**All occupations in which registered workers are employed, Total July to December (May and June unavailable).**

<b>Sector</b>	<b>Occupation</b>	<b>TOTAL July to December</b>
<b>GENERAL SERVICES AND TRADES</b>	Beautician	45
	Call centre agent / operator	145
	Carpenter / joiner	420
	Cleaner, domestic staff	4,215
	Electrician	80
	Floorer and wall tiler	20
	Gardener / landscape gardener	245
	Groundsman	95
	Hairdresser or related occupation	75
	Handyman, general (building and contracting)	325
	Launderer, dry cleaner, presser	295
	Mechanic	225
	Packer	5,210
	Painter and decorator	165
	Plasterer	45
	Plumbers, heating and ventilating engineer	40
	Refuse and salvage occupation	85
	Road sweeper	75
	Roofer, roof tiler and slater	15
	Translator	15
Window cleaner	10	
<b>ADMINISTRATION, BUSINESS &amp; MANAGEMENT</b>	Administrator, comms / marketing / advertising	105
	Administrator, finance	145
	Administrator, general	975
	Administrator, Human Resources	115
	Administrator, office	415
	Administrator, records	60
	Director/Senior executive	40
	Manager, customer care	50
	Manager, financial	30
	Manager, Human Resources / Training	45
	Manager, office	155
	Manager, quality	35
	Personal assistant	170
	Receptionist (office)	270
	Secretary	80
Senior manager	15	
Typist	15	
<b>AGRICULTURE</b>	Agricultural machinery operator	245
	Animal husbandry	105
	Crop harvester	1,215
	Farm worker/ Farm hand	3,280
	Fisherman	10
	Flower picker	130
	Forestry workers	25
	Fruit picker (farming)	540
Manager, farm	15	

## Accession Monitoring Report, May – December 2004

<b>ARTS, ENTERTAINMENT, LEISURE &amp; SPORT</b>	Actor	5	
	Administrator, sports and leisure	25	
	Artist / sculptor	10	
	Arts officer, Producers or Director	10	
	Author, writer	5	
	Camera person / Photographer	10	
	Circus performer	5	
	Circus rigger	†	
	Dancer or choreographer	5	
	Entertainer	40	
	Fitness coach	20	
	Leisure and theme park attendants	245	
	Leisure and travel service occupations	55	
	Lifeguard	20	
	Manager, entertainment /arts /leisure	25	
	Musicians	30	
	Sports and leisure assistants	90	
	Sports coach	5	
	Sports Manager	†	
	Sportsperson (professional)	25	
<b>COMPUTER SERVICES</b>	Administrator, IT	80	
	Engineer, hardware (computer)	45	
	Engineer, software	50	
	IT strategy and planning professionals	25	
	Manager, IT	10	
	Programmer, computer	45	
	Software analyst	30	
	Systems analyst	20	
	<b>CONSTRUCTION &amp; LAND SERVICES</b>	Bricklayer / mason	220
		Civil engineer	40
Construction materials delivery		30	
Constructor, road		20	
Constructor, roofing		25	
Constructor, steel		70	
Labourer, building		2,000	
Site manager (construction)		20	
Site supervisor (construction)		35	
Skilled machine operator (construction)		170	
Skilled vehicle operator (construction)		10	
Supplier, construction materials		10	
<b>EDUCATIONAL &amp; CULTURAL</b>	Administrator, university	20	
	Caretaker, school	25	
	Caterer, higher education	5	
	Caterer, school	10	
	Childminders and related occupations	285	
	Foreign language teacher (private)	5	
	Laboratory assistant	40	
	Nursery nurse	95	
	Playgroup leader / assistant	40	
	Researcher, higher education	60	
	School secretary	5	
	Teacher, higher education	50	
	Teacher, primary and nursery education	15	

## Accession Monitoring Report, May – December 2004

	Teacher, secondary education	25
	Teacher, special needs education	15
	Teacher's assistant	130
	Tutor (private)	10
<b>EXTRACTION INDUSTRIES</b>	Engineer, oil and natural gas	10
	Site Manager (extraction industry)	†
	Site Supervisor (extraction industry)	†
	Skilled machinery operator (extraction)	140
	Welder	270
	Worker, gas	†
	Worker, oil	†
<b>FINANCIAL SERVICES</b>	Accountant, certified	5
	Accountant, chartered	†
	Accountant, financial	30
	Accountant, trainee	45
	Actuary	†
	Administrator, financial services	70
	Auditor	10
	Bank Manager	†
	Banker, Business	10
	Banker, International	10
	Banker, Investment	5
	Banker, Personal	5
	Cashier (bank, building society)	25
	Financial Adviser	20
	Financial Consultant	30
	Management Accountant	10
	<b>FOOD PROCESSING</b>	Baker
Butcher / Meat cutter		320
Fishmonger / filleter / gutter		155
Food processing operative (fruit / veg)		1,535
Food processing operative (meat)		1,470
Slaughterer, meat		30
<b>GOVERNMENT</b>	Administrator, (government & related)	10
<b>HEALTH &amp; MEDICAL SERVICES</b>	Administrator / receptionist, medical	85
	Administrator, hospital	15
	Alternative/complementary medicine specialist	5
	Anaesthetist	25
	Care assistants and home carers	2,455
	Consultant, hospital	20
	Dental Hygienist	10
	Dental Nurse	65
	Dental practitioner	20
	Dietician	†
	Doctor (hospital)	55
	General Practitioner	10
	Manager, care home	5
	Manager, health and social services	10
	Midwife	†
	Nurse	30
	Nursing auxiliaries and assistants	110
Optician	15	
Pharmacist / Pharmacologist	40	

## Accession Monitoring Report, May – December 2004

	Physiologist	†
	Physiotherapist	10
	Psychiatrist	5
	Psychologist	5
	Researcher (medical)	25
	Residential wardens and Houseparents	35
	Social Worker	45
	Surgeon	10
	Technician, medical	15
	Veterinarian	20
	Ward Sister	5
	Warden (care home)	15
<b>HOSPITALITY &amp; CATERING</b>	Bar staff	1,925
	Chef, head	70
	Chef, other	1,345
	Chef, second	75
	Hotel porter	705
	Kitchen and catering assistants	5,785
	Maid / Room attendant (hotel)	3,300
	Manager, bar	30
	Manager, catering	70
	Manager, hotel	50
	Manager, other hospitality	95
	Manager, restaurant	85
	Manager, safety and hygiene	10
	Receptionist, hotel	365
	Waiter, waitress	4,890
	<b>LAW RELATED SERVICES</b>	Barrister
Caseworker (legal)		†
Interpreter		5
Lawyer / Solicitor		10
Legal Clerk		10
Legal secretary		5
<b>MANUFACTURING</b>	Chemical engineer	15
	Mechanical engineer	90
	Process operative (electronic equipment)	410
	Process operative (other Factory worker)	16,915
	Process operative (Textiles)	255
	Process operative (Vehicle manufacturing)	110
	Production Manager	35
	Supervisor, production	80
	Warehouse manager	15
	Warehouse Supervisor	80
<b>REAL ESTATE &amp; PROPERTY SERVICES</b>	Welder	150
	Architect	35
	Architectural Technician	40
	Property sales and lettings	20
	Surveyor	20
<b>RETAIL &amp; RELATED SERVICES</b>	Cashier / check-out operator	340
	Cold store operative	25
	Deliveryman	95
	Manager, retail	70
	Market and street traders and assistants	5

## Accession Monitoring Report, May – December 2004

	Merchandisers and window dressers	10	
	Purchaser (retail trade)	30	
	Retailer	100	
	Sales and retail assistants	2,485	
	Shelf stacker	75	
	Supervisor, retail	50	
	Telephone salesperson	25	
	Telesales Supervisor	5	
	Warehouse manager	15	
	Warehouse Operative	3,665	
	Warehouse Supervisor	15	
	Wholesaler	5	
<b>SECURITY AND PROTECTION SERVICES</b>	Policeman/woman	†	
	Secure delivery worker	5	
	Security Guard	254	
	Supervisor, door /bouncer	10	
<b>TELECOMMUNICATIONS</b>	Telecommunications administrator	20	
	Telecommunications Engineer	30	
	Telecommunications Manager	†	
	Telecommunications Supervisor	†	
<b>TRANSPORT</b>	Air Steward / Stewardess	55	
	Airport staff	25	
	Conductor, bus	†	
	Dock Worker	10	
	Driver, bus	205	
	Driver, coach	20	
	Driver, crane	10	
	Driver, delivery van	555	
	Driver, fork-lift	75	
	Driver, HGV (Heavy Goods Vehicle)	695	
	Driver, PCV (Passenger Carrying Vehicle)	35	
	Driver, taxi	20	
	Engineer, other transport related	65	
	Engineer, railway	5	
	Ship hand	5	
	Ship's Captain	†	
	Steward / Stewardess (ferry/shipping)	10	
	Ticketeer and station attendants	20	
	<b>UTILITIES (Gas, Water &amp; Electricity suppliers)</b>	Administrator (utilities)	5
		Engineer, electrical	20
Engineer, water		†	
Maintenance (electrical)		35	
Maintenance (gas)		5	
Maintenance (water/sewage)		5	
Manager, utilities		5	
Power station staff		†	
Sewage Worker		5	
Supervisor (gas/water/electric)		5	
Water works staff		5	
Not Stated		5,370	
<b>TOTAL</b>		<b>83,985</b>	