



Home Office

BUILDING A SAFE, JUST
AND TOLERANT SOCIETY

DWP Department for
Work and Pensions

 **HM Revenue
& Customs**

Department for
**Communities and
Local Government**

Accession Monitoring Report

May 2004 – March 2006

A joint online report by the Home Office,
Department for Work and Pensions,
HM Revenue & Customs and
Department for Communities and Local Government.

23 May 2006

INTRODUCTION

BACKGROUND.....	1
KEY FINDINGS.....	1
NOTE ON THE PUBLICATION.....	3
NOTE ON THE WORKER REGISTRATION SCHEME DATA.....	3
TECHNICAL NOTE.....	4

WORKER REGISTRATION SCHEME (WRS)

APPLICANTS AND APPLICATIONS TO THE WRS

1. Applicants.....	5
1.a. Applications.....	7

APPLICANT PROFILE

2. Nationality of applicants.....	8
-----------------------------------	---

PROFILE OF REGISTERED WORKERS

3. Age and Gender of registered workers.....	10
4. Dependants of registered workers.....	12
5. Sectors in which registered workers are employed.....	13
6. Occupations in which registered workers are employed.....	15
7. Registered workers' hours of work and wages.....	17
8. Proportion of registered workers in temporary/permanent employment.....	17
9. Geographical distribution of registered workers.....	18
10. Geographical distribution of registered workers by sector.....	20
11. Nationality of registered workers by sector.....	23

NATIONAL INSURANCE NUMBERS

12. National Insurance Numbers allocated and purpose of allocation.....	25
13. National Insurance Number applications by region.....	26

BENEFITS AND TAX CREDITS

14. Applications for tax-funded, income-related benefits.....	27
15. Nationality of applicants for tax-funded, income-related benefits.....	28
16. Applications for tax-funded, income-related benefits by region.....	28
17. Applications for Child Benefit.....	29
18. Applications for Tax Credits.....	30

HOUSING AND HOMELESSNESS SUPPORT

19. Local Authority Lettings.....	31
20. Homelessness assistance.....	31

ANNEX A All occupations in which registered workers are employed.....	33
---	----

INTRODUCTION

Background

On 1 May 2004, ten countries joined the European Union (EU). Those countries are: Cyprus; the Czech Republic; Estonia; Hungary; Latvia; Lithuania; Malta; Poland; Slovakia; and Slovenia. From that date, nationals of Malta and Cyprus have had full free movement rights and rights to work, throughout the European Union. Prior to enlargement, existing EU member states had the right to regulate access to their labour markets by nationals of the other eight countries – the 'Accession 8' or 'A8'. The UK Government put in place transitional measures to regulate A8 nationals' access to the labour market (via the Worker Registration Scheme) and to restrict access to benefits.

The data in this publication are based on Management Information and are provisional and may be subject to change. The data are not National Statistics.

Key Findings

- Nationals from the Accession 8 countries continue to come to the UK to work, contributing to the success of the UK economy, whilst making very few demands of our welfare system or public services.
- In total there were 392 thousand applicants to the Worker Registration Scheme between 1 May 2004 and 31 March 2006.
- Accession workers are continuing to go where the work is, helping to fill the gaps in our labour market, particularly in administration, business and management, hospitality and catering, agriculture, manufacturing and food, fish and meat processing.
- In many cases Accession nationals are supporting the provision of public services in communities across the UK. Between July 2004 and March 2006, almost 5,700 Accession country nationals registered as bus, lorry and coach drivers and over 11,500 as care workers. There were 1,400 teachers, researchers and classroom assistants; almost 550 dental practitioners (including hygienists and dental nurses); and over 1,750 GPs, hospital doctors, nurses and specialists.
- 14% of registered workers were based in London. However, as workers are based all over the UK the proportion applying to London fell from 25% in Q2 2004 to 11% in the first quarter 2006. As the proportion applying elsewhere has increased, the Anglia region has now overtaken London with 15% of workers.

Accession Monitoring Report, May 2004 – March 2006

- 97% of workers were working full time, and 98% of applications for National Insurance numbers made by Accession country nationals between May 2004 and March 2006 were for employment purposes.
- The vast majority of workers are young and single, 82% of workers were aged between 18 and 34. 94% of registered workers had no dependants living with them in the UK, and only 4% had dependants under the age of 17 with them.
- The numbers applying for tax-funded income-related benefits, child benefit, tax credits and housing support remain very low. For example, only 4,385 applications for Income Support and Jobseeker's Allowance were processed between May 2004 and March 2006, and of these applications only 400 were allowed to proceed for further consideration.

Note on the publication

This is the seventh of a series of quarterly reports based on provisional Management Information collected through the Worker Registration Scheme (WRS) and manual monitoring of applications for National Insurance Numbers, claims for benefits, applications for tax credits and applications for housing and homelessness assistance. The figures published in the earlier reports have been updated to include applications that were previously outstanding. As there are now 1 part quarter (May-June) and 7 whole quarters (July-Sept, Oct-Dec, Jan-Mar, Apr-Jun, Jul-Sept, Oct-Dec and Jan-Mar) available the data is presented in quarters although for continuity some of the charts are still shown as monthly data.

Note on the Worker Registration Scheme data

Nationals of the A8 countries who wish to take up employment in the UK are generally required to register with the Worker Registration Scheme (WRS). The statistics in this publication are only of those that have registered with the Home Office, to work in the UK: workers who are self-employed do not need to register and are therefore not included in these figures: there may also be other workers from the accession countries who for one reason or another do not register and are thus also not included in these figures. The data from the WRS provided here are data on applicants to the scheme rather than applications (with the exception of Table 1.a and section 1.a.). Applicants must register more than once if they are employed by more than one employer. They must also re-register if they change employer. Each application to the WRS therefore represents one job, not one applicant. To avoid counting applicants more than once, each applicant is represented only once in this report – with information relating to the first job for which they registered.

Data are provisional and an estimated 950 applications from the period remain outstanding. In these cases final decisions had not been issued at the time of producing this report.

All WRS data in this report is sorted according to the date the applicant applied. The 'date applied' is the date the applicant puts on the application form. There will be cases in which there is a delay between when the forms are filled in or posted and when the applications are received by the Home Office.

The number of applicants to the Worker Registration Scheme (WRS) does not represent a measurement of net migration to the UK (inflows minus outflows): rather, it is a gross (cumulative) figure for the number of workers applying to the WRS. The figures are not current: an individual who has registered to work and who leaves employment is not required to de-register, so some of those counted will have left the employment for which they registered and indeed some are likely to have left the UK.

Technical Note

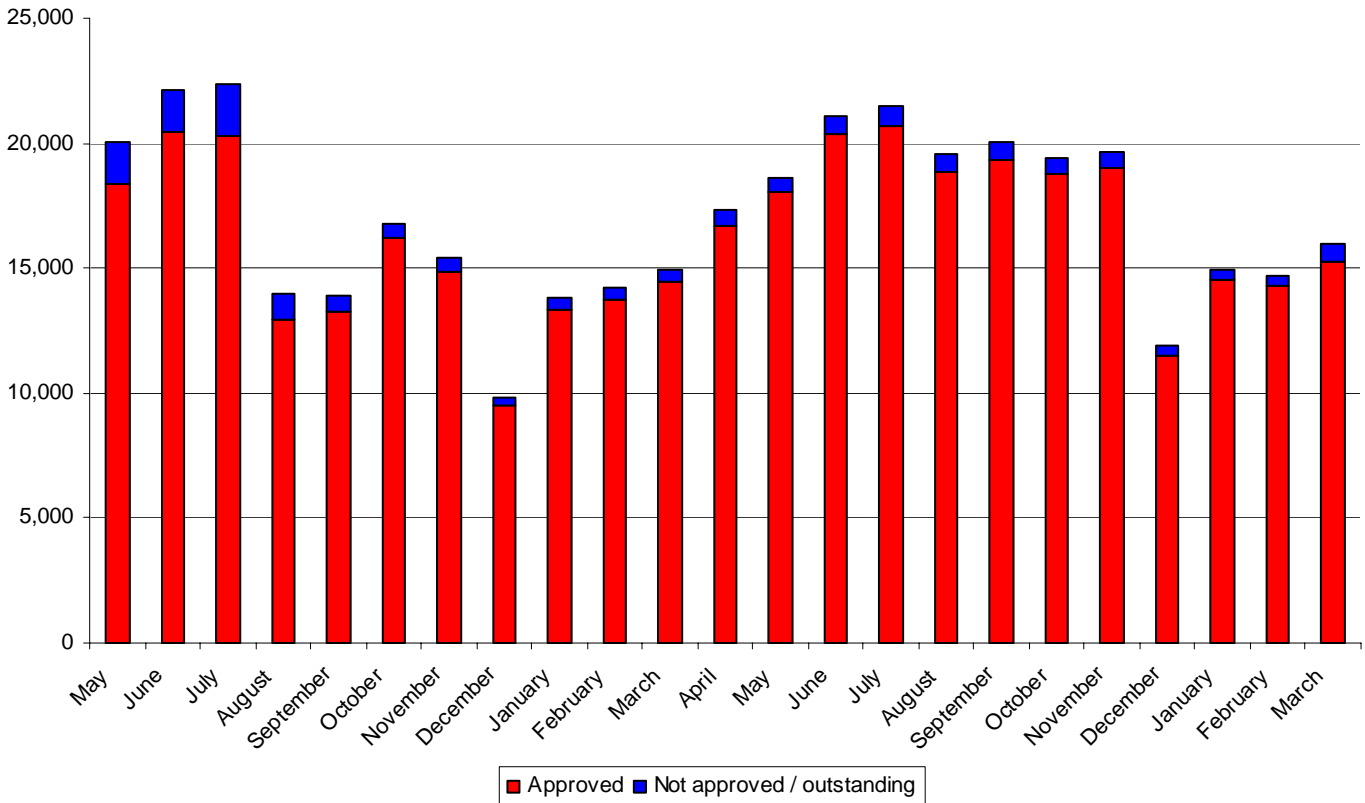
- All Worker Registration Scheme figures (other than percentages) are rounded to the nearest 5.
† indicates 1 or 2.
- Because of rounding, totals may not sum. All percentages are calculated from non-rounded figures.
- Q2 2004 is only a part quarter of May and June so care should be taken when comparing this with subsequent quarters.

WORKER REGISTRATION SCHEME (WRS)

Applicants and Applications to the WRS

1. Applicants

Chart 1: Applicants applied by month applied. May 2004 – March 2006



- In total there were 392 thousand applicants from 1 May 2004 to 31 March 2006, 375 thousand of whom were issued with Worker Registration certificates and cards.
- In the first 3 months applications peaked at over 22 thousand per month. Numbers have since fluctuated slightly with a low of around 10 thousand applicants in December 2004. Since then applications have increased again towards the summer. The levels in January to March 2006 were higher than in the same months in 2005.

Accession Monitoring Report, May 2004 – March 2006

Table 1: Applicants by quarter applied. May 2004 – March 2006.

	Approved	Refused	Exempt	Withdrawn	SUB-TOTAL	Estimated Outstanding	TOTAL
Q2 2004	38,825	550	275	2,550	42,200	5	42,205
Q3 2004	46,440	430	275	3,120	50,260	-	50,260
Q4 2004	40,605	270	95	1,110	42,080	-	42,080
Q1 2005	41,490	480	115	865	42,950	10	42,960
Q2 2005	55,090	565	85	1,335	57,070	25	57,095
Q3 2005	58,840	380	70	1,705	60,995	65	61,060
Q4 2005	49,265	320	35	1,245	50,860	110	50,970
Q1 2006	44,005	240	30	655	44,925	735	45,660
TOTAL	374,555	3,230	975	12,585	391,345	950	392,295

This table shows applicants rather than the number of applications made. The figures are for initial applications only (not multiple applications, where an individual is doing more than one job simultaneously, nor re-registrations, where an individual has changed employers).

Note: Please see Introduction: Technical Note on WRS data

Accession Monitoring Report, May 2004 – March 2006

1.a. Applications

- A total of 498 thousand applications, excluding outstanding applications, were made between May 2004 and March 2006, of which 479 thousand were approved (i.e. the worker's employment was registered).
- The total includes 80 thousand applications to re-register (from those who have previously registered but have changed employer), 4 thousand multiple registrations (from those working for more than one employer simultaneously), and 23 thousand multiple re-registrations (from those registering for subsequent, additional jobs, or those who have left their employer and are re-registering for more than one job). These applications account for the difference between the number of applicants and the number of applications.
- Over the reporting period, the number of re-registrations has risen from 540 in the part quarter, May and June 2004, to 18,440 in the latest quarter. The number of multiple registrations has fallen from 1,075 in the part quarter, May and June 2004, to 230 in the latest quarter.

Table 1.a.: Multiple applications and Re-registrations. May 2004 – March 2006.

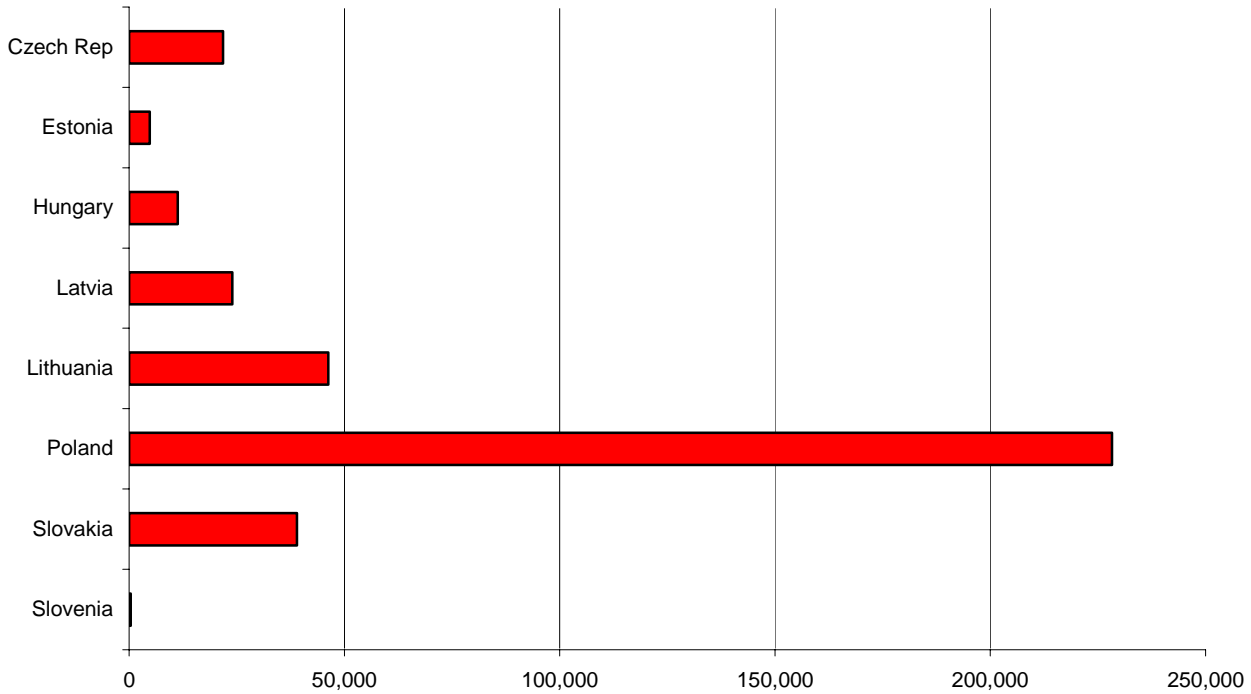
Period	Multiple	Re-registration	Multiple Re-registration	TOTAL
Q2 2004	1,075	540	920	2,535
Q3 2004	560	2,940	1,350	4,850
Q4 2004	395	6,650	1,585	8,630
Q1 2005	305	9,760	2,395	12,460
Q2 2005	340	13,245	3,425	17,015
Q3 2005	450	13,420	4,010	17,880
Q4 2005	320	14,865	4,070	19,260
Q1 2006	230	18,440	5,035	23,705
TOTAL	3,680	79,860	22,790	106,330

Note: Please see Introduction: Technical Note on WRS data

Applicant Profile

2. Nationality of applicants

Chart 2: Nationality of applicants: May 2004 – March 2006.



- In the period 1 May 2004 to 31 March 2006, the highest proportion of applicants were Polish (61% of the total), followed by Lithuanian (12%) and Slovak (10%) applicants. These proportions have remained roughly constant throughout the period.

Accession Monitoring Report, May 2004 – March 2006

Table 2: Nationality of applicants approved by quarter applied. May 2004 – March 2006.

Period	Czech Rep	Estonia	Hungary	Latvia	Lithuania	Poland	Slovakia	Slovenia	TOTAL
Q2 2004	2,265	595	1,020	2,625	7,115	21,755	3,410	45	38,825
Q3 2004	3,080	690	1,200	3,375	7,065	26,085	4,885	60	46,440
Q4 2004	2,910	580	1,395	2,670	5,090	23,175	4,725	55	40,605
Q1 2005	2,720	710	1,430	3,030	5,540	23,205	4,805	50	41,490
Q2 2005	2,715	720	1,585	4,165	7,230	32,840	5,805	30	55,090
Q3 2005	2,860	600	1,670	3,290	5,715	38,295	6,370	35	58,840
Q4 2005	2,255	530	1,665	2,460	4,470	32,815	5,020	55	49,265
Q1 2006	1,760	375	1,350	2,380	4,025	30,060	3,990	55	43,995
TOTAL	20,565	4,795	11,315	24,000	46,255	228,235	39,010	385	374,555
As % of total	5%	1%	3%	6%	12%	61%	10%	<0.5%	100%

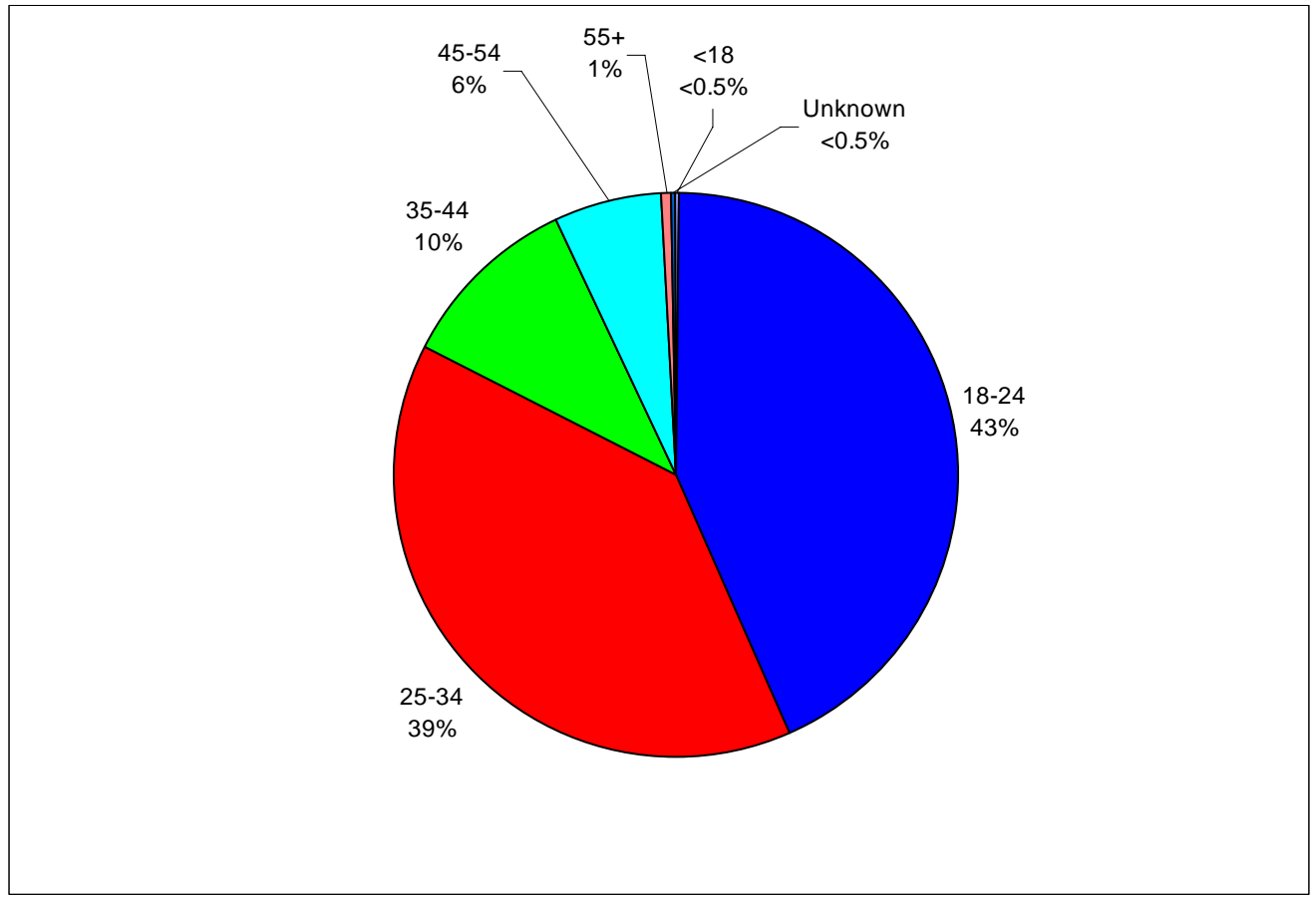
This table shows applicants approved rather than the total number of applications made. The figures are for initial applications only (not multiple applications, where an individual is doing more than one job simultaneously, nor re-registrations, where an individual has changed employers).

Note: Please see Introduction: Technical Note on WRS data

Profile of Registered Workers

3. Age and Gender of registered workers

Chart 3: Age of registered workers. May 2004 – March 2006.



- Of those who applied between May 2004 and March 2006, 82% of registered workers were aged 18 – 34. This percentage has been fairly consistent across the period, although there were more people in the younger 18-24 bracket during the summer months of June to August.

Accession Monitoring Report, May 2004 – March 2006

Table 3: Age of registered workers. May 2004 – March 2006.

Age	Q2 2004	Q3 2004	Q4 2004	Q1 2005	Q2 2005	Q3 2005	Q4 2005	Q1 2006	TOTAL	As % of total
<18	100	140	80	100	185	245	130	100	1,080	< 0.5 %
18-24	16,155	21,960	16,230	15,940	23,240	29,795	20,750	17,220	161,290	43%
25-34	16,160	17,030	16,640	17,285	21,730	19,725	19,435	18,430	146,435	39%
35-44	3,740	4,385	4,525	4,945	6,020	5,460	5,290	4,890	39,255	10%
45-54	2,250	2,510	2,665	2,795	3,415	3,155	3,175	2,885	22,850	6%
55-64	335	325	355	355	405	380	420	400	2,975	1%
65+	5	5	10	10	5	5	5	5	50	< 0.5 %
Others	80	80	100	65	85	75	60	65	610	< 0.5 %
TOTAL	38,825	46,440	40,600	41,490	55,090	58,840	49,265	44,005	374,555	100%

This table shows registered workers rather than the number of applications made. The figures are for initial applications only (not multiple applications, where an individual is doing more than one job simultaneously, nor re-registrations, where an individual has changed employers).

Note: Please see Introduction: Technical Note on WRS data

- The Male:Female ratio for those who applied between May 2004 and March 2006 was 57:43. However this proportion has varied from a ratio of 53:47 in the first quarter after accession to 59:41 in the first quarter of 2006.

4. Dependants of registered workers¹

- A very small minority (6%) of registered workers who applied between May 2004 and March 2006 had dependants living with them in the UK. Amongst those who did have dependants, the average number of dependants was 1.3.
- The number of dependants as a proportion of the number of registered workers has remained roughly consistent throughout the period.

Table 4: Registered workers' dependants, May 2004 – March 2006.

Period	Total registered workers	Registered workers with dependants	Number of dependants		
			Under 17	17 and over	TOTAL
Q2 2004	38,825	1,905	1,345	1,125	2,470
Q3 2004	46,440	2,155	1,465	1,320	2,785
Q4 2004	40,605	2,585	1,640	1,625	3,265
Q1 2005	41,490	2,415	1,605	1,490	3,095
Q2 2005	55,090	2,975	1,980	1,885	3,865
Q3 2005	58,840	3,465	2,370	2,095	4,465
Q4 2005	49,265	3,770	2,535	2,300	4,835
Q1 2006	44,005	4,185	2,900	2,405	5,305
TOTAL	374,555	23,450	15,845	14,235	30,080

This table shows registered workers rather than the number of applications made. The figures are for initial applications only (not multiple applications, where an individual is doing more than one job simultaneously, nor re-registrations, where an individual has changed employers).

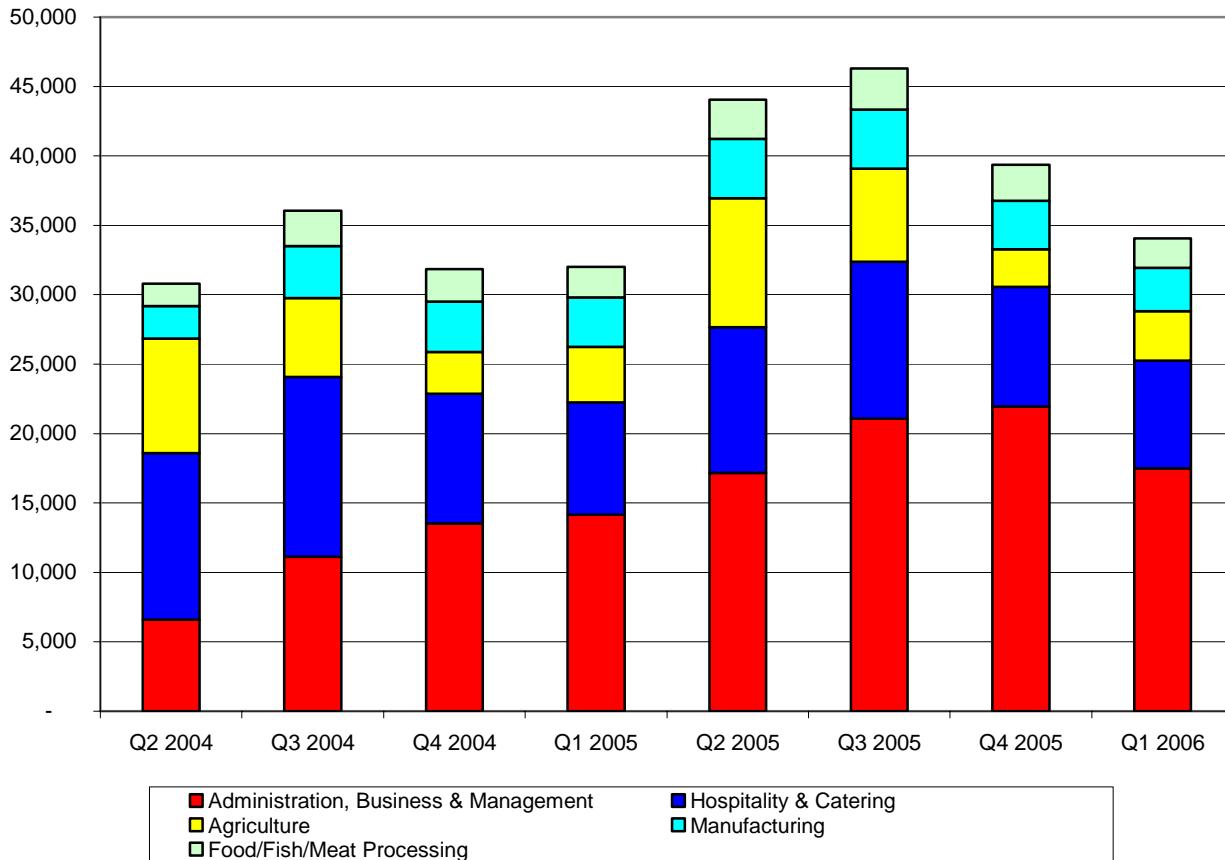
Note: it is likely that there is some 'double counting' of dependants, in the sense that some of those recorded as dependants (particularly older children and spouses) may also have registered in their own right to work in the UK.

Note: Please see Introduction: Technical Note on WRS data

¹ This data is derived from applicants' responses to the question on the WRS application form: "If your dependants (children and/or spouse or partner) are living with you in the UK, how many of them are: Aged 16 or under?" and "Aged 17 or above?" The Home Office does not verify these responses.

5. Sectors in which registered workers are employed

Chart 4: Top 5 sectors in which registered workers are employed, by quarter applied. May 2004 – March 2006.



- The top five sectors, for registered workers who applied between May 2004 to March 2006, were Administration, Business & Management (33%), Hospitality & Catering (22%), Agriculture (12%), Manufacturing (8%) and Food, Fish & Meat Processing (5%).
- Administration, Business & Management has overtaken Hospitality & Catering as the sector that employs the most accession workers. The proportion of workers in the Administration, Business & Management sector increased from 17% in Q2 2004 to 40% in the latest quarter. Meanwhile, the proportion in Hospitality and Catering fell from 31% in Q2 2004 to 18% in Q1 2006.
- Agriculture is the other sector where there has been a considerable change over the period reflecting the seasonal nature of the work. The proportion of workers who were employed in Agriculture peaked in the summer months making up 21% in Q2 2004 and was lowest during the winter months with only 5% in Q4 2005.

Accession Monitoring Report, May 2004 – March 2006

Table 5: Sectors in which registered workers are employed, by quarter applied. May 2004 – March 2006.

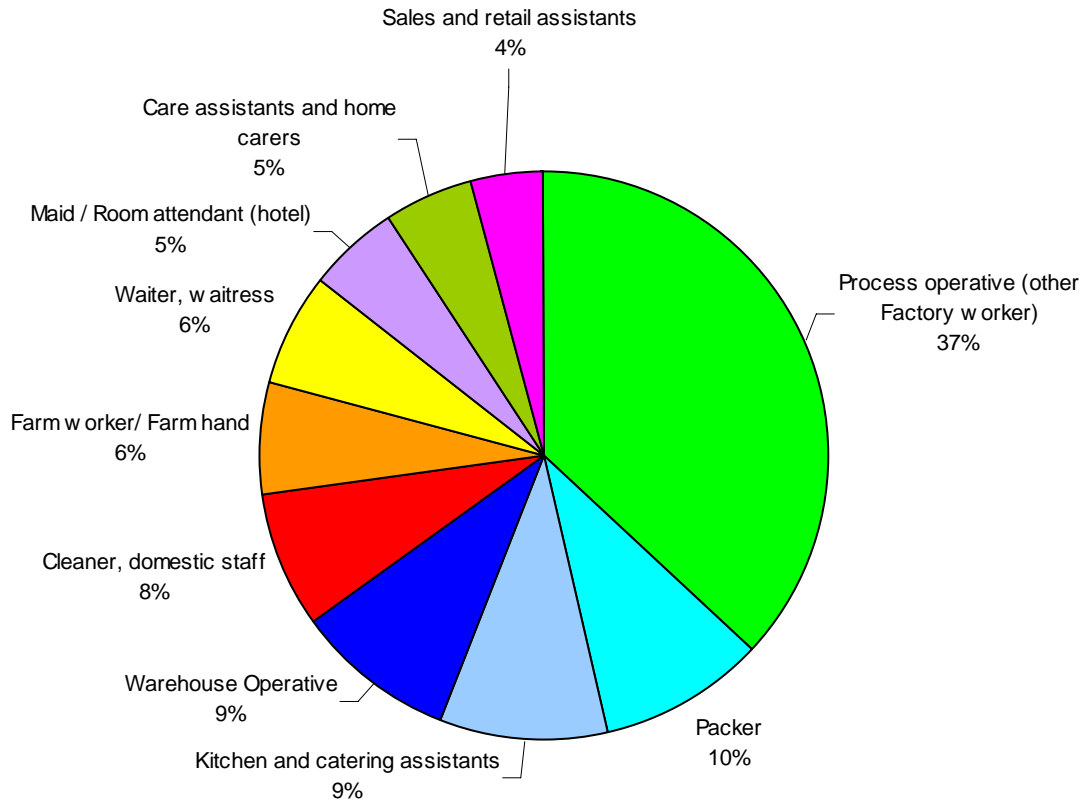
Sector	Q2 2004	Q3 2004	Q4 2004	Q1 2005	Q2 2005	Q3 2005	Q4 2005	Q1 2006	Total
Administration, Business & Management	6,590	11,110	13,535	14,160	17,175	21,070	21,950	17,495	123,085
Hospitality & Catering	12,000	12,980	9,325	8,085	10,480	11,315	8,615	7,765	80,570
Agriculture	8,240	5,660	3,005	4,000	9,295	6,695	2,700	3,555	43,145
Manufacturing	2,360	3,750	3,640	3,550	4,280	4,265	3,495	3,115	28,455
Food/Fish/Meat Processing	1,590	2,545	2,345	2,215	2,815	2,950	2,610	2,120	19,190
Health & Medical	1,170	2,220	2,160	2,305	2,585	3,295	2,745	2,700	19,175
Retail	1,545	1,950	1,860	1,815	2,125	2,535	2,280	1,895	16,005
Construction & Land	1,710	1,995	1,480	1,610	1,910	2,095	1,625	2,030	14,455
Transport	600	910	1,215	1,505	1,890	1,830	1,460	1,320	10,735
Entertainment & Leisure	790	950	450	890	1,195	1,135	445	575	6,430
Education & Cultural	460	545	490	445	480	510	490	580	3,990
Real Estate & Property	155	205	170	240	240	255	195	205	1,665
Financial Services	135	160	130	115	110	135	95	140	1,020
Computer Services	130	120	135	100	95	125	100	145	945
Extraction Industries	75	145	145	85	110	125	120	105	910
Security & Protection	95	115	130	100	110	195	145	90	985
Telecommunications	55	60	60	80	30	45	30	40	400
Sporting Activities	45	60	45	40	15	35	30	30	300
Utilities (Gas, Electricity, Water)	35	50	40	35	35	50	35	40	320
Government	20	30	25	25	30	40	35	25	230
Law-related Services	35	30	25	20	15	20	20	10	170
Not Stated	990	850	195	85	80	115	40	30	2,370
Total	38,825	46,440	40,605	41,490	55,090	58,835	49,260	44,010	374,555

This table shows registered workers rather than the number of applications made. The figures are for initial applications only (not multiple applications, where an individual is doing more than one job simultaneously, nor re-registrations, where an individual has changed employers).

Note: Please see Introduction: Technical Note on WRS data

6. Occupations in which registered workers are employed

Chart 5: Top 10 occupations in which registered workers are employed. July 2004 – March 2006.



(May/June 2004 data not available)

Note: Percentages indicate percentage of all workers registered, July 2004 to March 2006

- The top 20 occupations have remained largely consistent over the period.
- The biggest group of workers in the top 10 occupations (37%) are in general occupations classified as Process operatives (other factory worker). This is followed by Packers (10%) and Kitchen and catering assistants (9%).
- Please refer to **Annex A** for a full table of occupations of registered workers who applied between July 2004 and March 2006.

Accession Monitoring Report, May 2004 – March 2006

Table 6: Top 20 occupations in which registered workers are employed, by quarter applied.
July 2004 – March 2006

Occupation	Q3 2004	Q4 2004	Q1 2005	Q2 2005	Q3 2005	Q4 2005	Q1 2006	Total
Process operative (other Factory worker)	8,135	9,835	9,995	13,095	14,965	15,135	11,610	82,775
Packer	2,610	2,905	3,045	3,270	3,720	3,320	2,520	21,390
Kitchen and catering assistants	1,505	2,305	2,440	2,565	4,095	4,725	3,320	20,960
Warehouse Operative	3,245	2,695	2,465	3,490	3,580	2,865	2,585	20,920
Cleaner, domestic staff	2,340	2,015	2,135	2,470	3,025	2,550	3,005	17,540
Farm worker/ Farm hand	2,215	1,135	1,705	4,170	2,420	1,025	1,780	14,455
Waiter, waitress	2,910	2,070	1,705	2,030	2,255	1,665	1,480	14,120
Maid / Room attendant (hotel)	1,865	1,505	1,305	1,910	2,140	1,695	1,585	12,010
Care assistants and home carers	1,215	1,360	1,385	1,590	2,075	1,825	1,700	11,150
Sales and retail assistants	1,325	1,215	1,105	1,400	1,610	1,280	1,200	9,135
Labourer, building	1,170	910	1,140	1,440	1,550	1,135	1,425	8,765
Crop harvester	955	280	610	2,205	1,655	275	425	6,405
Food processing operative (fruit / veg)	805	795	705	1,010	895	760	600	5,570
Bar staff	1,150	795	665	810	890	610	525	5,445
Food processing operative (meat)	805	720	565	675	655	655	465	4,535
Chef, other	800	580	545	625	690	530	480	4,255
Driver, HGV (Heavy Goods Vehicle)	300	435	570	635	555	460	335	3,285
Administrator, general	540	460	400	465	480	430	375	3,150
Fruit picker (farming)	450	100	125	1,170	855	155	135	2,990
Driver, delivery van	265	320	340	410	420	350	305	2,410
TOTAL TOP 20	34,595	32,435	32,950	45,435	48,535	41,445	35,865	271,250
Not Stated	11,845	8,165	8,540	9,655	10,305	7,820	8,140	64,480
GRAND TOTAL	46,440	40,605	41,490	55,090	58,840	49,265	44,005	335,730

This table shows registered workers rather than the number of applications made. The figures are for initial applications only (not multiple applications, where an individual is doing more than one job simultaneously, nor re-registrations, where an individual has changed employers).

Note: Please see Introduction: Technical Note on WRS data

7. Registered workers' hours of work² and wages³

- 97% of registered workers who applied between May 2004 and March 2006 were working full time (more than 16 hours a week)⁴.
- The vast majority (79%) of registered workers were earning £4.50 - £5.99 per hour.

8. Proportion of registered workers in temporary/permanent employment⁵

- For those who applied in the period from May 2004 to March 2006, 49% of registered workers were in temporary employment and 48% were in permanent employment (3% did not provide this information).
- The proportion of registered workers employed on a temporary or permanent basis varied considerably from sector to sector. In Agriculture, 68% were in temporary employment and 28% in permanent employment. In Administration, Business and Management, 82% were in temporary employment and 16% in permanent employment. In Hospitality and Catering the pattern was reversed, with only 20% in temporary employment and 77% in permanent employment.

² This data is derived from applicants' responses to the question on the WRS application form: "How many hours per week do you normally work?" The Home Office does not verify these responses.

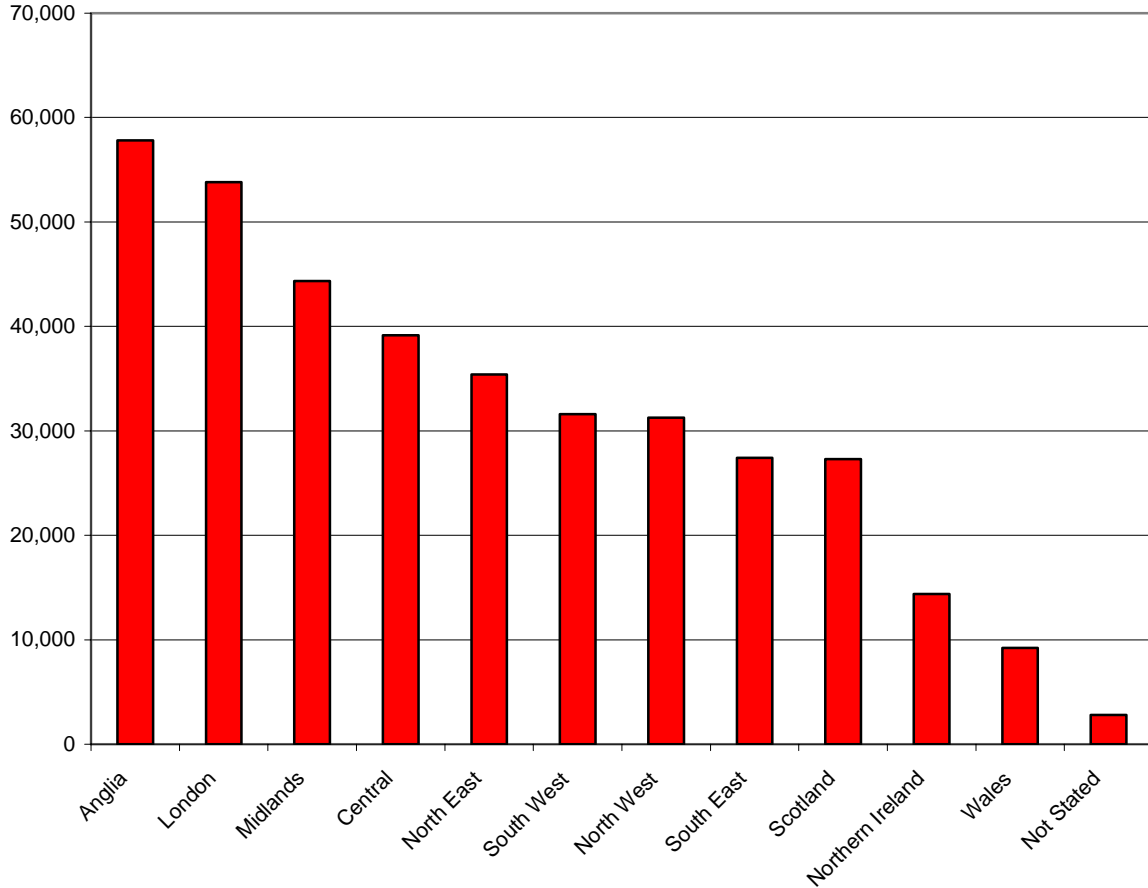
³ This data is derived from applicants' responses to the question on the WRS application form: "How much is your hourly rate, before deductions?" The Home Office does not verify these responses.

⁴ The 97% is likely to be an underestimate. The proportion of registered workers working part time is likely to be lower than 3%, because some were doing more than one part time job, simultaneously. The data published here only takes account of one of those jobs – so the total hours an individual was working will in some cases be more than 16.

⁵ This data is derived from applicants' responses to the question on the WRS application form: "What type of employment are you undertaking? (Please indicate by ticking the appropriate box)." The Home Office does not verify these responses.

9. Geographical distribution of registered workers⁶

Chart 6: Geographical distribution of registered workers. May 2004 – March 2006.



- Anglia has had the greatest number of workers registering during the May 2004 to March 2006 period with 15% of the total. This is followed by London and the Midlands Regions with 14% and 12% of the total respectively.
- Northern Ireland and Wales had the fewest registrations with 4% and 2% of the total respectively.
- The proportion applying to London however fell from 25% in Q2 2004 to just 11% in Q1 2006. At the same time the proportion and number applying elsewhere has increased and in the latest quarter the highest proportion of workers was in the Anglia region.

⁶ Regions are based on the applicant's employer's postcode, where supplied. Regions are defined according to the Post Office's Postal Address Book regions.

Table 7: Geographical distribution of registered workers. May 2004 – March 2006.

Sector	Q2 2004	Q3 2004	Q4 2004	Q1 2005	Q2 2005	Q3 2005	Q4 2005	Q1 2006	TOTAL
Anglia	7,950	7,855	6,105	6,115	8,485	8,425	6,860	6,025	57,820
London	9,560	8,920	6,985	6,095	6,075	5,930	5,325	4,915	53,805
Midlands	2,930	4,225	4,550	5,645	6,840	7,065	7,175	5,900	44,330
Central	4,840	4,790	4,260	4,530	5,555	5,935	4,590	4,650	39,150
North East	1,575	3,395	4,090	3,890	4,900	6,615	5,970	4,960	35,395
South West	2,600	3,885	3,215	3,560	5,465	5,375	3,740	3,775	31,615
North West	1,565	3,180	2,920	3,350	4,895	5,870	4,990	4,495	31,265
South East	3,930	4,350	2,920	2,720	3,975	4,010	2,955	2,575	27,435
Scotland	2,250	3,255	2,645	2,285	4,545	5,285	3,755	3,270	27,290
Northern Ireland	745	1,340	1,570	1,840	2,460	2,320	2,210	1,910	14,395
Wales	625	875	930	1,120	1,410	1,560	1,390	1,320	9,230
Not Stated	255	365	405	345	485	455	310	195	2,815
TOTAL	38,830	46,440	40,605	41,490	55,090	58,840	49,265	43,995	374,555

This table shows registered workers rather than the number of applications made. The figures are for initial applications only (not multiple applications, where an individual is doing more than one job simultaneously, nor re-registrations, where an individual has changed employers).

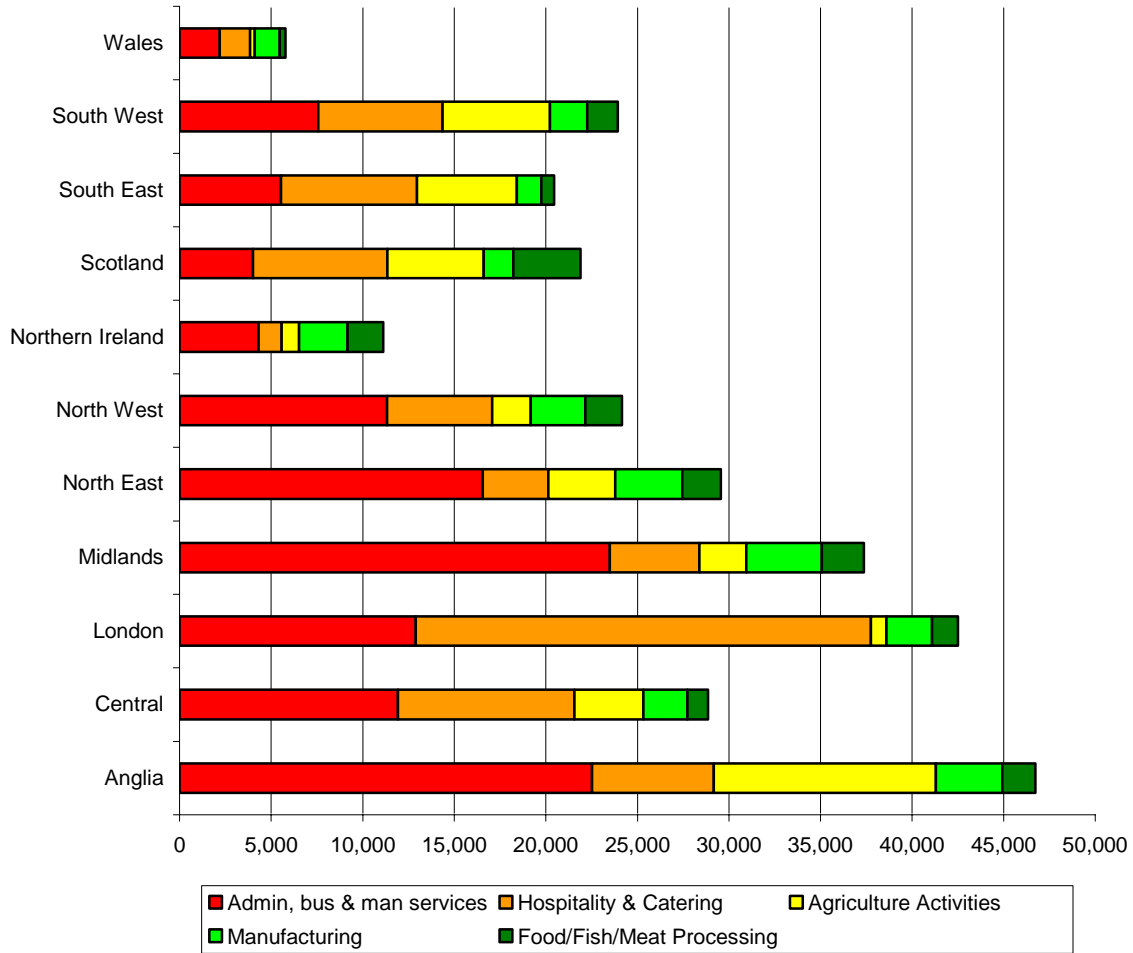
Please note that changes have been made to the way that regional information is recorded by refining the linkage to postcode information to ensure greater accuracy. This has resulted in changes in the data shown under some regions and Not stated since the second Quarter 2004, but does not change the totals of previously published information.

Note: Please see Introduction: Technical Note on WRS data

10. Geographical distribution of registered workers by sector⁷

Chart 7: Top 5 sectors – geographical distribution of registered workers. Cumulative total, May 2004 – March 2006.

Trends within sectors



- 31% of those working in Hospitality and Catering were in London – far more than in any other region. The next highest proportions were working in South Central England and the South East (12% and 9% respectively).
- 28% of those working in Agriculture were in Anglia, followed by the South West (14%), whereas only 2% of Agriculture workers were in London.
- 19% of those working in Administration, Business and Management were in the Midlands, 18% were in Anglia and 10% were in London.

⁷ Regions are based on the applicant's employer's postcode, where supplied. Regions are defined according to the Post Office's Postal Address Book regions.

Trends within regions

- 43% of those located in London were working in Hospitality and catering compared with 27% of those working in Scotland, but only 11% in Anglia and 9% in Northern Ireland.
- 53% of those located in the Midlands were working in Administration, Business and Management, as were 39% of those in Anglia, but only 20% in the South East and 15% in Scotland.
- 21% of those in Anglia were working in Agriculture, but only 20% in the South West and 19% in Scotland.

Accession Monitoring Report, May 2004 – March 2006

**Table 8: Top 10 sectors – geographical distribution of registered workers.
Cumulative total, May 2004 – March 2006**

Sector	London	Anglia	Midlands	Central	North East	North West	South West	South East	Scotland	Northern Ireland	Wales	Unknown*	TOTAL
Admin, bus & man services	12,900	22,520	23,495	11,915	16,555	11,335	7,580	5,530	3,995	4,320	2,190	745	123,085
Hospitality & Catering	24,845	6,640	4,890	9,645	3,585	5,730	6,780	7,435	7,360	1,250	1,650	755	80,575
Agriculture Activities	845	12,145	2,555	3,770	3,660	2,105	5,870	5,445	5,240	950	270	290	43,145
Manufacturing	2,485	3,615	4,130	2,400	3,655	2,980	2,030	1,345	1,625	2,655	1,350	190	28,455
Food/ Fish/ Meat processing	1,415	1,810	2,295	1,120	2,100	1,995	1,670	700	3,685	1,945	310	145	19,190
Health & Medical Services	2,500	2,595	1,355	3,080	1,850	1,345	1,735	2,135	1,335	560	540	150	19,180
Retail & Related Services	4,445	2,875	1,340	1,640	900	1,170	795	1,305	640	520	180	190	16,005
Construction & Land Services	2,175	1,415	1,015	2,005	970	1,595	750	1,100	1,710	1,475	150	100	14,455
Transport	1,065	1,775	1,720	975	975	1,445	750	725	685	370	170	80	10,735
Ent & Leisure Services	1,275	705	525	855	375	860	660	520	305	55	230	60	6,430
TOTAL TOP TEN	53,955	56,100	43,320	37,400	34,620	30,565	28,620	26,240	26,580	14,100	7,035	2,710	361,250
Total (others/ unknown)	4,145	1,720	1,015	1,740	770	710	720	1,190	715	300	175	110	13,305
GRAND TOTAL	58,100	57,820	44,335	39,140	35,390	31,270	29,340	27,435	27,295	14,400	7,210	2,820	374,555

This table shows registered workers rather than the number of applications made. The figures are for initial applications only (not multiple applications, where an individual is doing more than one job simultaneously, nor re-registrations, where an individual has changed employers).

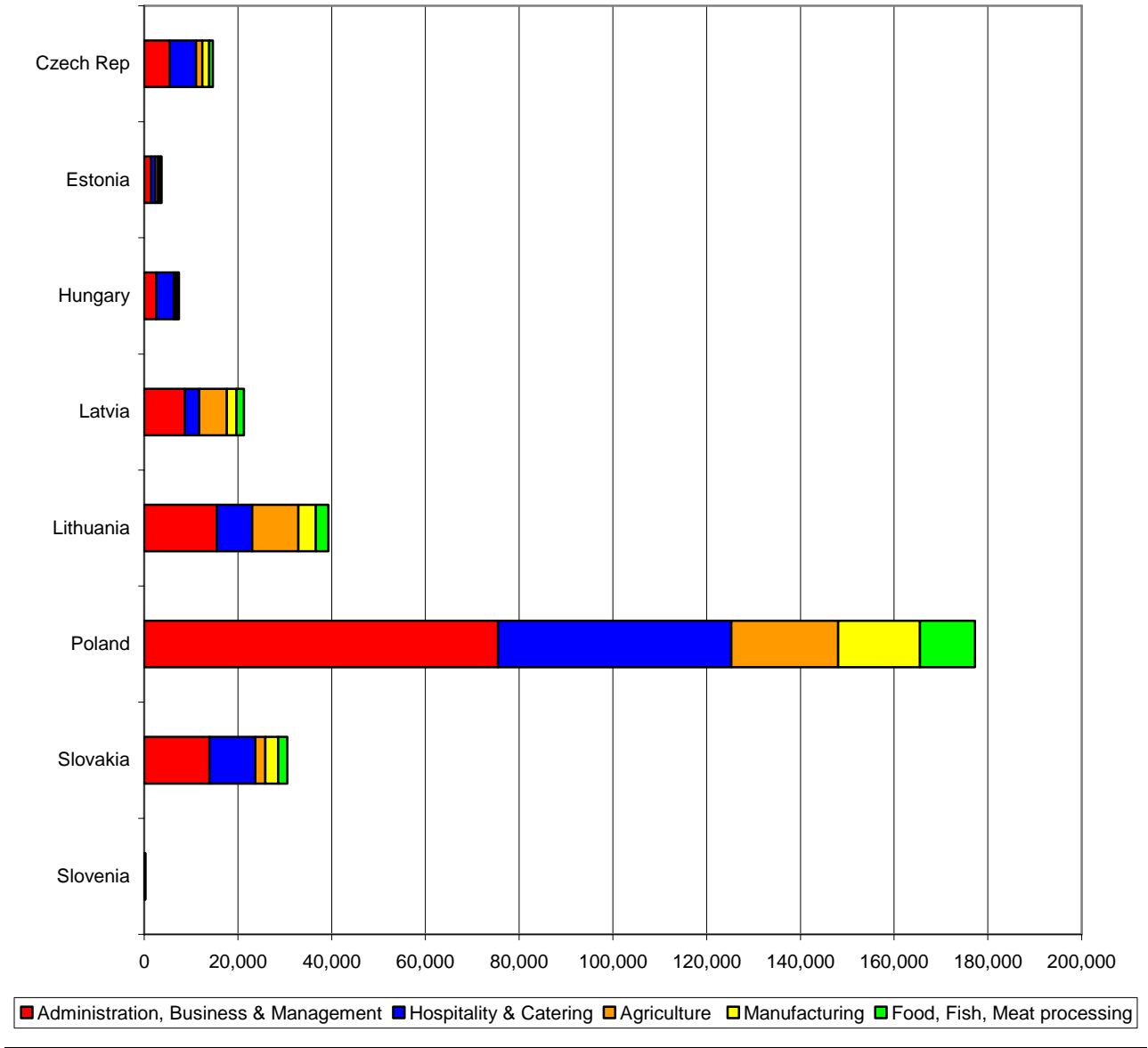
**Postcode not supplied*

Note: Regions are defined according to the Post Office's Postal Address Book regions. Data is based on employer's postcode, where supplied.

Note: Please see Introduction: Technical Note on WRS data

11. Nationality of registered workers by sector

Chart 8: Top 5 sectors – Nationality of registered workers. Cumulative total, May 2004 – March 2006



- Polish workers made up the largest proportion in every sector, with 62% in hospitality and catering compared to 61% in all sectors.
- A greater proportion of workers from Lithuania and Latvia worked in Agriculture than any other nationality. 21% of Lithuanians and 25% of Latvians worked in Agriculture compared to 12% of all workers.

Table 9: Top 10 sectors – Nationality of registered workers. Cumulative total, May 2004 – March 2006

Sector	Czech Rep	Estonia	Hungary	Latvia	Lithuania	Poland	Slovakia	Slovenia	TOTAL
Administration, Business & Management	5,400	1,440	2,590	8,675	15,515	75,485	13,915	70	123,090
Hospitality & Catering	5,700	920	3,725	3,055	7,525	49,735	9,790	125	80,575
Agriculture	1,315	615	425	5,915	9,880	22,830	2,160	5	43,145
Manufacturing	1,470	495	505	2,050	3,695	17,470	2,745	25	28,455
Food, Fish, Meat processing	770	270	165	1,610	2,705	11,750	1,915	5	19,190
Health & Medical	1,420	290	880	425	1,240	12,440	2,460	25	19,180
Retail	1,115	185	690	585	1,400	10,045	1,955	35	16,010
Construction & Land	785	165	440	745	1,965	9,185	1,160	10	14,455
Transport	630	135	530	190	655	7,970	615	10	10,735
Entertainment & Leisure	640	95	455	290	605	3,500	830	15	6,430
TOTAL TOP TEN	19,245	4,615	10,405	23,545	45,175	220,400	37,545	325	361,255
Total Other/Unknown	1,300	175	905	450	1,080	7,880	1,450	60	13,300
GRAND TOTAL	20,545	4,790	11,310	23,995	46,260	228,280	38,995	380	374,555

This table shows registered workers rather than the number of applications made. The figures are for initial applications only (not multiple applications, where an individual is doing more than one job simultaneously, nor re-registrations, where an individual has changed employers).

Note: Please see Introduction: Technical Note on WRS data

National Insurance Numbers

12. National Insurance Numbers allocated and purpose of allocation

- Between May 2004 and March 2006, the total number of National Insurance Number applications increased each quarter, bar one, to an overall total of just over 347,000.
- 98.4% of National Insurance Numbers were allocated for employment purposes, 0.7% for benefit purposes and 0.9% for tax credit purposes.
- For the period 1st May 2004 to 31st March 2006, 56.2% of applicants were male and 43.8% were female. The percentage of 18-34 year olds was 82.6%.

Table 10: National Insurance Numbers allocated and refused. May 2004 – March 2006.

	Total Allocated	Allocated for employment purposes	Allocated for benefit purposes	Allocated for tax credit purposes	Total Refused
Q2 2004	7,946	7,806	83	57	220
Q3 2004	22,883	22,532	212	139	686
Q4 2004	32,650	32,201	293	156	705
Q1 2005	46,394	45,833	297	264	588
Q2 2005	55,623	54,812	495	316	588
Q3 2005	60,399	59,743	411	245	539
Q4 2005	59,402	58,133	446	823	639
Q1 2006	62,075	60,830	359	886	606
TOTAL	347,372	341,890	2,596	2,886	4,571

Note:

* Reporting periods are:

Q2 2004 = 1 May-30 June 2004, Q3 2004 = 1 July-29 September 2004, Q4 2004 = 30 September-29 December 2004.

Q1 2005 = 30 December 2004 -30 March 2005, Q2 2005 = 31 March -29 June 2005, Q3 2005 = 30 June -30 September 2005,

Q4 2005 = 1 October - 31 December 2005.

Q1 2006 = 1 January - 31 March 2006,

13. National Insurance Number applications by region

Table 11: National Insurance Numbers allocated and refused by region, May 2004 to March 2006

	Q2 2004	Q3 2004	Q4 2004	Q1 2005	Q2 2005	Q3 2005	Q4 2005	Q1 2006	TOTAL
London	3,733	7,726	9,357	11,645	15,241	16,964	14,347	15,513	94,526
South East	1,366	3,432	5,847	5,333	6,984	7,820	8,110	8,784	47,676
East of England	678	2,340	4,157	5,829	6,301	4,428	4,185	6,563	34,481
East Midlands	354	1,892	2,545	4,293	5,004	5,441	6,143	5,466	31,138
Scotland	441	1,732	1,528	3,610	4,710	5,865	6,396	4,809	29,091
North West	445	1,460	2,198	4,134	3,754	6,634	5,853	4,514	28,992
West Midlands	235	1,541	2,251	3,198	4,003	4,355	4,499	5,346	25,428
South West	368	1,360	2,472	3,371	3,440	3,830	4,181	4,377	23,399
Yorks & Humber	174	872	1,421	2,976	3,706	2,906	2,010	3,345	17,410
Wales	141	699	765	1,498	1,614	1,282	2,297	1,936	10,232
North East	75	219	275	474	614	757	937	1,091	4,442
Fast-track**	156	296	539	621	840	656	1,083	937	5,128
TOTAL	8,166	23,569	33,355	46,982	56,211	60,938	60,041	62,681	351,943

Note:

* Reporting periods are:

Q2 2004 = 1 May-30 June 2004, Q3 2004 = 1 July-29 September 2004, Q4 2004 = 30 September-29 December 2004.

Q1 2005 = 30 December 2004 -30 March 2005, Q2 2005 = 31 March -29 June 2005, Q3 2005 = 30 June -30 September 2005,

Q4 2005 = 1 October -31 December 2005. Q1 2006 = 1 January – 31 March 2006.

**Fast-track applications relate to highly skilled / specialist employment only. Specific regions are unknown.

Jobcentre Plus is currently divided into the eleven regions shown. A customer's postcode determines to which region they are allocated.

Benefits

14. Applications for tax-funded, income-related benefits

- Table 12 below shows applications for income-based Jobseeker's Allowance, Income Support and State Pension Credit.
- Between May 2004 and March 2006, there were 1,334 applications for Income Support, 2,993 applications for income-based Jobseeker's Allowance and 58 applications for State Pension Credit.
- Only 366 of these applications were allowed on initial decision to proceed for further consideration of whether the claimants meet the other conditions of entitlement. In addition to these, 32 applications were allowed on re-consideration / appeal.
- In all, so far only 9.0% of applications have been allowed and the vast majority (91.0%) were disallowed on the basis of the Right to Reside and Habitual Residence Tests.
- Most applications were from Polish (40.8%) and Czech nationals (19.4%).

Table 12: Applications for tax-funded, income-related benefits. May 2004 – March 2006

	Q2 2004	Q3 2004	Q4 2004	Q1 2005	Q2 2005	Q3 2005	Q4 2005	Q1 2006	TOTAL
Applications for Income Support									
Disallowed*	43	60	101	134	123	251	237	288	1,237
Allowed to proceed for further processing	0	3	2	7	4	5	22	54	97
TOTAL	43	63	103	141	127	256	259	342	1,334
Applications for income-based Jobseeker's Allowance									
Disallowed*	191	162	184	268	358	497	423	613	2,696
Allowed to proceed for further processing	6	8	4	5	12	43	71	148	297
TOTAL	197	170	188	273	370	540	494	761	2,993
Applications for State Pension Credit									
Disallowed*	0	1	3	7	5	13	15	10	54
Allowed to proceed for further processing	0	0	0	0	0	1	1	2	4
TOTAL	0	1	3	7	5	14	16	12	58
Total disallowed*	234	223	288	409	486	761	675	911	3,987
Total allowed to proceed for further processing	6	11	6	12	16	49	94	204	398
TOTAL	240	234	294	421	502	810	769	1,115	4,385

*on the Right to Reside and Habitual Residence tests .

Reporting periods are: Q2 2004 = 1 May-30 June 2004, Q3 2004 = 1 July-30 September 2004, Q4 2004 = 1 October-31 December 2004. Q1 2005 = 1 January -31 March 2005, Q2 2005 = 1 April -30 June 2005, Q3 2005 = 1 July-30 September 2005, Q4 2005 = 1 October-31 December 2005. Q1 2006 = 1 January – 31 March 2006.

15. Nationality of applicants for tax-funded, income-related benefits

Table 13: Applications for tax-funded, income-related benefits by nationality. May 2004 – March 2006

	Q2 2004	Q3 2004	Q4 2004	Q1 2005	Q2 2005	Q3 2005	Q4 2005	Q1 2006	TOTAL
Czech Rep	112	70	64	64	79	177	115	171	852
Estonia	8	7	8	14	11	14	12	13	87
Hungary	1	3	19	18	34	32	33	28	168
Latvia	10	18	14	29	51	62	67	93	344
Lithuania	23	27	34	52	75	101	117	160	589
Poland	67	83	112	166	198	338	315	513	1,792
Slovakia	18	22	42	77	53	84	105	130	531
Slovenia	1	4	1	1	1	2	5	7	22
TOTAL	240	234	294	421	502	810	769	1,115	4,385

16. Applications for tax-funded, income-related benefits by region

Table 14: Applications for tax-funded, income-related benefits by region. May 2004 – March 2006

	Q2 2004	Q3 2004	Q4 2004	Q1 2005	Q2 2005	Q3 2005	Q4 2005	Q1 2006	TOTAL
London	57	78	99	108	168	275	240	314	1,339
North West	45	35	45	52	79	98	90	141	585
Yorks & Humber	21	26	22	73	41	77	89	121	470
South East	43	19	23	28	40	55	83	79	370
East of England	10	16	18	37	35	82	59	101	358
West Midlands	14	6	27	30	53	50	41	73	294
East Midlands	5	12	15	28	21	50	57	91	279
Scotland	8	15	15	24	30	47	40	77	263
North East	19	13	17	10	13	27	22	34	155
South West	11	9	2	21	13	23	21	44	144
Wales	7	5	11	10	9	26	27	33	128
TOTAL	240	234	294	421	502	810	769	1,115	4,385

Reporting periods are:

Q2 2004 = 1 May-30 June 2004, Q3 2004 = 1 July-30 September 2004, Q4 2004 = 1 October-31 December 2004.
 Q1 2005 = 1 January -31 March 2005, Q2 2005 = 1 April -30 June 2005, Q3 2005 = 1 July-30 September 2005,
 Q4 2005 = 1 October-31 December 2005. Q1 2006 = 1 January – 31 March 2006.

17. Applications for Child Benefit

- During the period May 2004 to March 2006 53% of applications were approved and 16% were rejected.
- There are cases where an application may be processed in a different month to that in which it was received. This is because once a Child Benefit application is made by an A8 national, the Child Benefit Office makes further enquiries about the applicant’s date of arrival in the UK and employment status, in order to ascertain whether or not the applicant passes the right to reside test.
- The total number of children involved in applications approved this quarter was 9,824

Table 15: Applications for Child benefit (Great Britain and Northern Ireland⁸). May 2004 – March 2006

	Applications Received	Applications Approved	Applications Rejected	Applications Terminated
Q2 2004	1,161	190	30	2
Q3 2004	1,628	828	441	2
Q4 2004	2,300	1,068	436	19
Q1 2005	3,059	1,484	362	21
Q2 2005	4,074	1,451	602	16
Q3 2005	6,834	3,466	993	39
Q4 2005	8,523	3,962	1,205	121
Q1 2006	10,353	7,710	1,932	182
TOTAL	37,932	20,159	6,001	402

⁸ Child Benefit is administered separately in Great Britain and in Northern Ireland.

18. Applications for Tax Credits

- Between May 2004 and March 2006, 68% of applications for tax credits were approved and 9% were rejected.

Table 16: Applications for Tax Credits. May 2004 – March 2006

	Applications Received	Applications Approved	Applications Rejected	Applications Terminated
Q2 2004	80	0	0	0
Q3 2004	234	51	72	0
Q4 2004	626	201	113	0
Q1 2005	1,184	502	126	0
Q2 2005	1,320	1,027	100	0
Q3 2005	1,815	1,179	229	0
Q4 2005	2,775	1,836	164	0
Q1 2006	8,068	6,127	593	0
TOTAL	16,102	10,923	1,397	0

Housing and Homelessness support⁹

19. Local Authority Lettings

- The May 2004 to December 2005 total of 94 lettings to A8 nationals represents just 0.04% of the average number of lettings to all new tenants over a typical 20 month period.

Table 17: Local Authority lettings, by reason. England.

	Currently legally employed	Self-employed/provider of services	Recipient of services	Other	TOTAL
2004 Q2 ¹⁰	0	0	0	2	2
Q3	11	0	0	1	12
Q4	18	0	0	1	19
2005 Q1	9	1	0	0	10
Q2	7	1	0	7	15
Q3	12	0	1	4	17
Q4	19	0	0	0	19
TOTAL	76	2	1	15	94

20. Homelessness assistance

- The May 2004 to December 2005 total of 1048 decisions on A8 applications for homelessness assistance represents just 0.2% of the average number of homelessness decisions over a typical 20 month period.

Table 18: Decisions on applications for assistance^{11, 12}. England.

	Main duty owed to Applicant	Applicant not owed a main duty	TOTAL
2004 Q2 ¹⁰	42	122	164
Q3	66	102	168
Q4	70	53	123
2005 Q1	38	88	126
Q2	34	74	108
Q3	66	119	185
Q4	70	104	174
TOTAL	386	662	1048

⁹ Data only available up to December 2005. All data are provisional.

¹⁰ Data for 2004 Q2 is May and June only.

¹¹ Under the homelessness provisions of the 1985 and 1996 Housing Acts

¹² 'Main duty owed' means that the local authority is required to secure accommodation for applicant and their household

- The May 2004 to December 2005 total of 386 A8 acceptances represents just 0.2% of the average number of acceptances of homelessness applications over a typical 20 month period.

Table 19: Homeless households owed a main duty¹³ by reason for eligibility. England.

	Currently legally employed	Self- employed/ provider of services	Recipient of services	Other	TOTAL
2004 Q2 ¹⁴	19	1	2	20	42
Q3	41	1	0	24	66
Q4	63	4	0	3	70
2005 Q1	30	1	0	7	38
Q2	26	1	0	7	34
Q3	47	0	2	17	66
Q4	49	3	0	18	70
TOTAL	275	11	4	96	386

¹³ 'Main duty owed' means that the local authority is required to secure accommodation for applicant and their household

¹⁴ Data for 2004 Q2 is May and June only.

ANNEX A

All occupations in which registered workers are employed, Total July 2004 to March 2006

(May and June 2004 unavailable).

SECTOR	OCCUPATION	TOTAL July 2004 to Mar-06
GENERAL SERVICES AND	Beautician	125
TRADES	Call centre agent / operator	415
	Carpenter / joiner	1,950
	Cleaner, domestic staff	17,540
	Electrician	300
	Floorer and wall tiler	105
	Gardener / landscape gardener	1,095
	Groundsman	350
	Hairdresser or related occupation	245
	Handyman, general (building and contracting)	1,115
	Launderer, dry cleaner, presser	1,445
	Mechanic	1,220
	Packer	21,390
	Painter and decorator	635
	Plasterer	165
	Plumbers, heating and ventilating engineer	160
	Refuse and salvage occupation	435
	Road sweeper	305
	Roofer, roof tiler and slater	75
	Translator	60
	Window cleaner	70
ADMINISTRATION,	Administrator, comms / marketing / advertising	285
BUSINESS &	Administrator, finance	580

Accession Monitoring Report, May 2004 – March 2006

MANAGEMENT	Administrator, general	3,150
	Administrator, Human Resources	345
	Administrator, office	1,280
	Administrator, records	235
	Director/Senior executive	100
	Manager, customer care	125
	Manager, financial	125
	Manager, Human Resources / Training	120
	Manager, office	365
	Manager, quality	90
	Personal assistant	490
	Receptionist (office)	710
	Secretary	230
	Senior manager	40
	Typist	50
AGRICULTURE	Agricultural machinery operator	825
	Animal husbandry	450
	Crop harvester	6,405
	Farm worker/ Farm hand	14,455
	Fisherman	35
	Flower picker	775
	Forestry workers	105
	Fruit picker (farming)	2,990
	Manager, farm	35
ARTS, ENTERTAINMENT,	Actor	5
LEISURE & SPORT	Administrator, sports and leisure	100
	Artist / sculptor	50
	Arts officer, Producers or Director	35

Accession Monitoring Report, May 2004 – March 2006

	Author, writer	10
	Camera person / Photographer	30
	Circus performer	15
	Circus rigger	55
	Dancer or choreographer	10
	Entertainer	250
	Fitness coach	70
	Leisure and theme park attendants	1,405
	Leisure and travel service occupations	405
	Lifeguard	55
	Manager, entertainment /arts /leisure	65
	Musicians	45
	Sports and leisure assistants	455
	Sports coach	10
	Sports Manager	5
	Sportsperson (professional)	45
COMPUTER SERVICES	Administrator, IT	240
	Engineer, hardware (computer)	160
	Engineer, software	250
	IT strategy and planning professionals	85
	Manager, IT	40
	Programmer, computer	200
	Software analyst	95
	Systems analyst	85
CONSTRUCTION & LAND SERVICES	Bricklayer / mason	810
	Civil engineer	215
	Construction materials delivery	100
	Constructor, road	140
	Constructor, roofing	160

Accession Monitoring Report, May 2004 – March 2006

	Constructor, steel	420
	Labourer, building	8,765
	Site manager (construction)	75
	Site supervisor (construction)	100
	Skilled machine operator (construction)	585
	Skilled vehicle operator (construction)	65
	Supplier, construction materials	30
EDUCATIONAL & CULTURAL	Administrator, university	55
	Caretaker, school	65
	Caterer, higher education	10
	Caterer, school	40
	Childminders and related occupations	775
	Foreign language teacher (private)	15
	Laboratory assistant	180
	Nursery nurse	275
	Playgroup leader / assistant	160
	Researcher, higher education	210
	School secretary	25
	Teacher, higher education	130
	Teacher, primary and nursery education	70
	Teacher, secondary education	75
	Teacher, special needs education	50
	Teacher's assistant	455
	Tutor (private)	25
EXTRACTION INDUSTRIES	Engineer, oil and natural gas	60
	Site Manager (extraction industry)	5
	Site Supervisor (extraction industry)	5
	Skilled machinery operator (extraction)	285
	Welder	1,330

Accession Monitoring Report, May 2004 – March 2006

	Worker, gas	5
	Worker, oil	15
FINANCIAL SERVICES	Accountant, certified	20
	Accountant, chartered	5
	Accountant, financial	105
	Accountant, trainee	120
	Actuary	†
	Administrator, financial services	160
	Auditor	30
	Bank Manager	10
	Banker, Business	20
	Banker, International	20
	Banker, Investment	20
	Banker, Personal	5
	Cashier (bank, building society)	85
	Financial Adviser	75
	Financial Consultant	90
	Management Accountant	20
FOOD PROCESSING	Baker	1,490
	Butcher / Meat cutter	1,410
	Fishmonger / filleter / gutter	615
	Food processing operative (fruit / veg)	5,570
	Food processing operative (meat)	4,535
	Slaughterer, meat	200
GOVERNMENT	Administrator, (government & related)	35
HEALTH & MEDICAL SERVICES	Administrator / receptionist, medical	185
	Administrator, hospital	55
	Alternative/complementary medicine specialist	15
	Anaesthetist	105

Accession Monitoring Report, May 2004 – March 2006

	Care assistants and home carers	11,150
	Consultant, hospital	135
	Dental Hygienist	50
	Dental Nurse	220
	Dental practitioner	285
	Dietician	†
	Doctor (hospital)	370
	General Practitioner	70
	Manager, care home	20
	Manager, health and social services	40
	Midwife	5
	Nurse	190
	Nursing auxiliaries and assistants	295
	Optician	30
	Pharmacist / Pharmacologist	220
	Physiologist	5
	Physiotherapist	35
	Psychiatrist	25
	Psychologist	10
	Researcher (medical)	160
	Residential wardens and Houseparents	100
	Social Worker	225
	Surgeon	45
	Technician, medical	90
	Veterinarian	70
	Ward Sister	10
	Warden (care home)	30
HOSPITALITY &	Bar staff	5,445
CATERING	Chef, head	340

Accession Monitoring Report, May 2004 – March 2006

	Chef, other	4,255
	Chef, second	215
	Hotel porter	2,175
	Kitchen and catering assistants	20,920
	Maid / Room attendant (hotel)	12,010
	Manager, bar	90
	Manager, catering	205
	Manager, hotel	125
	Manager, other hospitality	225
	Manager, restaurant	180
	Manager, safety and hygiene	25
	Receptionist, hotel	1,110
	Waiter, waitress	14,120
LAW RELATED SERVICES	Barrister	15
	Caseworker (legal)	5
	Interpreter	20
	Lawyer / Solicitor	25
	Legal Clerk	30
	Legal secretary	15
MANUFACTURING	Chemical engineer	90
	Mechanical engineer	385
	Process operative (electronic equipment)	1,445
	Process operative (other Factory worker)	82,775
	Process operative (Textiles)	1,210
	Process operative (Vehicle manufacturing)	480
	Production Manager	95
	Supervisor, production	260
	Warehouse manager	40
	Warehouse Supervisor	220

Accession Monitoring Report, May 2004 – March 2006

	Welder	610
REAL ESTATE &	Architect	175
PROPERTY SERVICES	Architectural Technician	175
	Property sales and lettings	65
	Surveyor	65
RETAIL & RELATED	Cashier / check-out operator	1,120
SERVICES	Cold store operative	45
	Deliveryman	290
	Manager, retail	240
	Market and street traders and assistants	35
	Merchandisers and window dressers	65
	Purchaser (retail trade)	115
	Retailer	285
	Sales and retail assistants	9,135
	Shelf stacker	235
	Supervisor, retail	155
	Telephone salesperson	75
	Telesales Supervisor	15
	Warehouse manager	85
	Warehouse Operative	20,960
	Warehouse Supervisor	70
	Wholesaler	20
SECURITY AND	Detention /Custody guard /officer	5
PROTECTION SERVICES	Policeman/woman	†
	Prison Officer	†
	Secure delivery worker	25
	Security Guard	1,030
	Supervisor, door /bouncer	30
TELECOMMUNICATIONS	Telecommunications administrator	60

Accession Monitoring Report, May 2004 – March 2006

	Telecommunications Engineer	105
	Telecommunications Manager	5
	Telecommunications Supervisor	5
TRANSPORT	Air Steward / Stewardess	165
	Airport staff	135
	Conductor (railways)	5
	Conductor, bus	15
	Dock Worker	40
	Driver, bus	1,955
	Driver, coach	105
	Driver, crane	30
	Driver, delivery van	2,410
	Driver, fork-lift	390
	Driver, HGV (Heavy Goods Vehicle)	3,285
	Driver, PCV (Passenger Carrying Vehicle)	530
	Driver, taxi	50
	Driver, train	†
	Driver, underground	†
	Engineer, other transport related	240
	Engineer, railway	50
	Ship hand	30
	Ship's Captain	†
	Steward / Stewardess (ferry/shipping)	40
	Ticketeer and station attendants	60
UTILITIES (Gas, Water & Electricity suppliers)	Administrator (utilities)	25
	Engineer, electrical	100
	Engineer, gas	5
	Engineer, water	10
	Maintenance (electrical)	105

Accession Monitoring Report, May 2004 – March 2006

Maintenance (gas)	10
Maintenance (water/sewage)	15
Manager, utilities	15
Power station staff	15
Sewage Worker	10
Supervisor (gas/water/electric)	10
Water works staff	15
Unstated	9,480
Total	335, 730